

高瑞电气

GAORUI ELECTRIC

CHANGZHOU GAORUI ELECTRIC CO.,LTD.

Factory Add: NiuTang Town, Wujin,Changzhou,Jiangsu,China

Tel: 0086-519-67890285

Fax: 0086-519-81081302

Website: www.lampshouse.com

Email: david@lampshouse.com



高瑞电气

GAORUI ELECTRIC



2018
COLLECTION

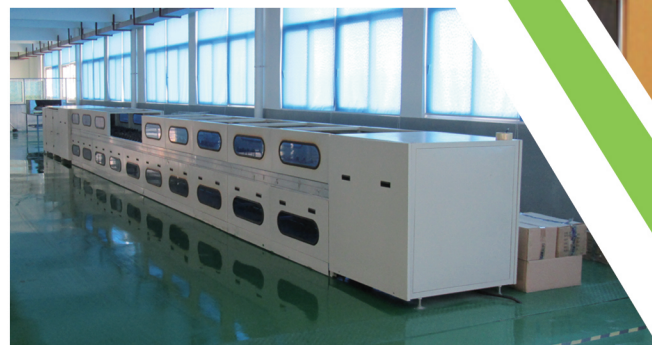
COMPANY PROFILE

Changzhou GaoRui Electric Co., Ltd. was established in 1990s, located in Changzhou, Jiangsu, China, with more than 20000 m² plant, more than 200 staffs.

Our factory focuses on the middle and high-end LED lighting products. Our main Item include: LED bulb; LED reflector bulb; LED energy saving lamp; LED filament bulb; LED strip light; LED panle light; LED fluorescent tube; LED ceiling and down light. Products are widely used in indoor lighting, home lighting, commercial shop decorative lighting, public places lighting and other applications.

Gaorui have more than 10 years of LED lighting R & D, production, sales experience; we cooperate with world famous manufacturers: CREE, Bridgelux, PHILIPS, Samsung and Mean Well and give 3 to 5 years warranty for products to our customer. And our company passed the 9001:2008 ISO international quality standard system certifications, the products passed the: CE, ETL, TUV, ERP, ROHS, SASO, INMETRO, NOM and other related certification.

We also have a professional and perfect pre-sale, sale, after-sales customer service and management system, our target is "satisfying every customer with fine-chosen materials, strict manufacturing technology, assured good quality and good service", the whole staffs from gaorui sincerely welcome the customer from all over the world to talk business and make cooperation with us. Hope we can be trustworthy partner in near future!



LONG LIFE ENERGY SAVING



www.lampshouse.com



Background image: A faint world map in light green.

CERTIFICATE OF CONFORMITY
Electromagnetic Compatibility

Report No.: JQL170810007-1
Holder of Certificate: Changzhou Hua Er Rui International Trade Co., Ltd.
Manufacturer: Changzhou Gaorui Electric Co., Ltd.
Description of Product: LED DOWN LIGHT
Model No.: GR-1615 60W, GR-1615(10W,15W), GR-1612(3W,5W,7W), GR-1616(10W,15W), GR-1620(10W,15W)
Description of Object: Rating: 85-265V
Trade Name: FSE
Test Standards: EN 55015: 2013, EN 61000-3-2: 2, EN 61000-3-3: 2, EN 61547: 2009

Date: August 17, 2017

CE

After preparation of the necessary technical documentation as well as the EC conformity declaration the required CE marking can be affixed on the product. Other relevant directives have to be observed.

Shenzhen Jialian Testing Consulting Co., Ltd.
Floor 5, Building 7, Xin Yuan Industrial Zone, Xili Town, Nanshan District, Shenzhen, Guangdong, China
Tel.: +86-755-33258090 Fax: +86-755-86108753 Website: www.test-jql.com

CERTIFICATE OF CONFORMITY
Electromagnetic Compatibility

Report No.: JQL170629974-2S
Holder of Certificate: Changzhou Hua Er Rui International Trade Co., Ltd.
Manufacturer: Changzhou Gaorui Electric Co., Ltd.
Description of Product: LED BULB
Model No.: GR-T140 40W, GR-T50(5W), GR-T120(30W), G GR-A60(7W,9W,10W), GR-GU10(3W,4W), GR-R80(10W), GR-Rating: 85-265V
Trade Name: FSE
Test Standards: EN 55015: 2013, EN 61000-3-2: 2, EN 61000-3-3: 2, EN 61547: 2009

Date: July 4, 2017

CE

After preparation of the necessary technical documentation as well as the EC conformity declaration the required CE marking can be affixed on the product. Other relevant directives have to be observed.

Shenzhen Jialian Testing Consulting Co., Ltd.
Floor 5, Building 7, Xin Yuan Industrial Zone, Xili Town, Nanshan District, Shenzhen, Guangdong, China
Tel.: +86-755-33258090 Fax: +86-755-86108753 Website: www.test-jql.com

CERTIFICATE OF CONFORMITY
Low Voltage Directive

Report No.: JQL170803003-2S
Holder of Certificate: Changzhou Hua Er Rui International Trade Co., Ltd.
Manufacturer: Changzhou Gaorui Electric Co., Ltd.
Description of Product: LED PANEL LIGHT
Model No.: GR-MB007 72W, GR-YC(3W,6W,9W,12W,15W,18W,20W,24W), GR-FC(3W,6W,9W,12W,15W,18W,24W), GR-MY(6W,12W,18W,24W), GR-FX(6W,12W,18W,24W), GR-YX(6W,12W,18W,24W), GR-YB(6W,12W,18W,24W), GR-FB(6W,12W,18W,24W), GR-MB007(24W,32W,36W,40W,42W,45W,48W,60W)
Description of Object: Rating: 85-265V-
Trade Name: FSE
Test Standards: EN 60598-2-2:2015, EN 60598-1:2015

Date: August 08, 2017

CE

After preparation of the necessary technical documentation as well as the EC conformity declaration the required CE marking can be affixed on the product. Other relevant directives have to be observed.

Shenzhen Jialian Testing Consulting Co., Ltd.
Floor 5, Building 7, Xin Yuan Industrial Zone, Xili Town, Nanshan District, Shenzhen, Guangdong, China
Tel.: +86-755-33258090 Fax: +86-755-86108753 Website: www.test-jql.com

CERTIFICATE OF CONFORMITY
Electromagnetic Compatibility Directive 2014/30/EU

Report No.: JQL170803003-1E
Holder of Certificate: Changzhou Hua Er Rui International Trade Co., Ltd.
Manufacturer: Changzhou Gaorui Electric Co., Ltd.
Description of Product: LED PANEL LIGHT
Model No.: GR-MB007 72W, GR-YC(3W,6W,9W,12W,15W,18W,20W,24W), GR-FC(3W,6W,9W,12W,15W,18W,24W), GR-MY(6W,12W,18W,24W), GR-FX(6W,12W,18W,24W), GR-YX(6W,12W,18W,24W), GR-YB(6W,12W,18W,24W), GR-FB(6W,12W,18W,24W), GR-MB007(24W,32W,36W,40W,42W,45W,48W,60W)
Description of Object: Rating: 85-265V-, 50/60Hz, 72WMax.
Trade Name: FSE
Test Standards: EN 55015: 2013+A1:2015, EN 61000-3-2: 2014, EN 61000-3-3: 2013, EN 61547: 2009

Date: August 08, 2017

CE

After preparation of the necessary technical documentation as well as the EC conformity declaration the required CE marking can be affixed on the product. Other relevant directives have to be observed.

Shenzhen Jialian Testing Consulting Co., Ltd.
Floor 5, Building 7, Xin Yuan Industrial Zone, Xili Town, Nanshan District, Shenzhen, Guangdong, China
Tel.: +86-755-33258090 Fax: +86-755-86108753 Website: www.test-jql.com

CERTIFICATE OF CONFORMITY
Electromagnetic Compatibility Directive 2014/35/EU

Report No.: JQL170629974-2C
Holder of Certificate: Changzhou Hua Er Rui International Trade Co., Ltd.
Manufacturer: Changzhou Gaorui Electric Co., Ltd.
Description of Product: DOWN LIGHT
Model No.: GR-T60(10W), GR-T70(15W), GR-T80(20W), GR-T100(25W), GR-C35(3W,4W,5W,6W,7W), GR-G45(3W,4W,5W,6W,7W), GR-MR16(3W,4W,5W,7W,9W), GR-R39(3W), GR-R50(5W,7W), GR-R63(7W,9W), GR-R90(13W), GR-PAR20(8W), GR-PAR30(12W), GR-PAR38(18W)
Description of Object: Rating: 85-265V-, 50/60Hz, 40WMax.
Trade Name: FSE
Test Standards: EN 55015: 2013, EN 61000-3-2: 2014, EN 61000-3-3: 2013, EN 61547: 2009

Date: August 08, 2017

CE

After preparation of the necessary technical documentation as well as the EC conformity declaration the required CE marking can be affixed on the product. Other relevant directives have to be observed.

Shenzhen Jialian Testing Consulting Co., Ltd.
Floor 5, Building 7, Xin Yuan Industrial Zone, Xili Town, Nanshan District, Shenzhen, Guangdong, China
Tel.: +86-755-33258090 Fax: +86-755-86108753 Website: www.test-jql.com

CERTIFICATE OF CONFORMITY
Electromagnetic Compatibility Directive 2014/35/EU

Report No.: JQL170810007-2C
Holder of Certificate: Changzhou Hua Er Rui International Trade Co., Ltd.
Manufacturer: Changzhou Gaorui Electric Co., Ltd.
Description of Product: DOWN LIGHT
Model No.: GR-T60(10W), GR-T70(15W), GR-T80(20W), GR-T100(25W), GR-C35(3W,4W,5W,6W,7W), GR-G45(3W,4W,5W,6W,7W), GR-MR16(3W,4W,5W,7W,9W), GR-R39(3W), GR-R50(5W,7W), GR-R63(7W,9W), GR-R90(13W), GR-PAR20(8W), GR-PAR30(12W), GR-PAR38(18W)
Description of Object: Rating: 85-265V-, 50/60Hz, 60WMax.
Trade Name: FSE
Test Standards: EN 55015: 2013, EN 61000-3-2: 2014, EN 61000-3-3: 2013, EN 61547: 2009

Date: August 08, 2017

CE

After preparation of the necessary technical documentation as well as the EC conformity declaration the required CE marking can be affixed on the product. Other relevant directives have to be observed.

Shenzhen Jialian Testing Consulting Co., Ltd.
Floor 5, Building 7, Xin Yuan Industrial Zone, Xili Town, Nanshan District, Shenzhen, Guangdong, China
Tel.: +86-755-33258090 Fax: +86-755-86108753 Website: www.test-jql.com



Contents

LED Panel Light ◀ 01-10

LED Ceiling & Down Light ◀ 11-16

LED Fluorescent tube ◀ 17-18

LED Reflector Bulb ◀ 19-22

LED Energy Saving Bulb ◀ 23-26

LED Bulb ◀ 27-38

LED Filament Bulb ◀ 39-41

LED Strip Light ◀ 42-44



LED Panel Light

Recessed round & square panel light



GL-001-YC

GL-001-FC

■ Features

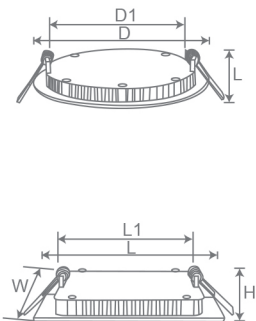
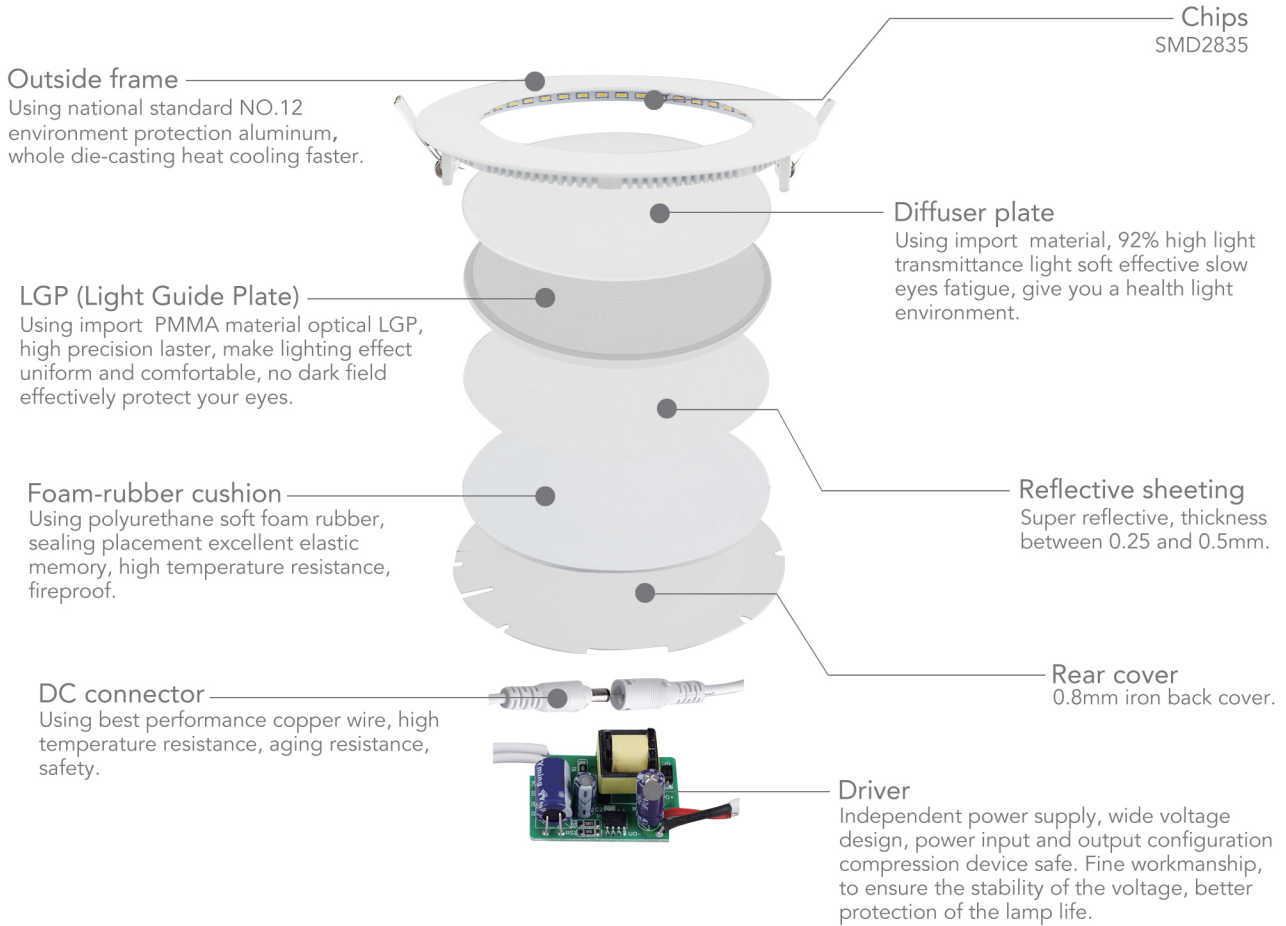
- Isolated Driver, non-isolated driver available;
- No mercury, environmental protection;
- The super-thin design: only 12mm thick;
- Aluminium frame with good heat conduction;
- Eco-friendly, energy-saving and high luminous efficacy;
- Instant start, no flickering, no humming;
- No electric wave;
- Installation way: recessed, mounted or suspended by fixing bracket on the back.



Applications

- 1-Hotel;
- 2-Conference/ meeting room/ showroom,
- 3-Factory& office;
- 4-Commercial complex;
- 5-Residential/ institution building;
- 6-Public building, housing and the underground garage;
- 7- School, hospital and all places that need energy saving and high brightness.





Item No.	Power	Size(DxL/LxWxH)	Hole(D1/L1xW1)	Temperature Color
GL-001-YC03	3W	φ85x13mm	φ70mm	6400K/4500K/2700K
GL-001-YC06	6W	φ120x13mm	φ100mm	6400K/4500K/2700K
GL-001-YC09	9W	φ147x13mm	φ120mm	6400K/4500K/2700K
GL-001-YC12	12W	φ170x13mm	φ120mm	6400K/4500K/2700K
GL-001-YC15	15W	φ200x13mm	φ180mm	6400K/4500K/2700K
GL-001-YC18	18W	φ200x13mm	φ205mm	6400K/4500K/2700K
GL-001-YC20	20W	φ225x13mm	φ210mm	6400K/4500K/2700K
GL-001-YC24	24W	φ300x13mm	φ280mm	6400K/4500K/2700K
GL-001-FC03	3W	85x85x13mm	70x70mm	6400K/4500K/2700K
GL-001-FC06	6W	120x120x13mm	100x100mm	6400K/4500K/2700K
GL-001-FC09	9W	147x147x13mm	120x120mm	6400K/4500K/2700K
GL-001-FC12	12W	170x170x13mm	120x120mm	6400K/4500K/2700K
GL-001-FC15	15W	200x200x13mm	180x180mm	6400K/4500K/2700K
GL-001-FC18	18W	200x200x13mm	205x205mm	6400K/4500K/2700K
GL-001-FC20	20W	225x225x13mm	210x210mm	6400K/4500K/2700K
GL-001-FC24	24W	300x300x13mm	280x280mm	6400K/4500K/2700K

LED Panel Light

Glass panel light



GL-002-YB



GL-002-FB

Features

- Concise and beautiful appearance, electrostatic coating;
- Optical level diffusion plate and guide plate;
- Light body, easy mounting;
- Diecasting Alumium+imported PMMA, over 97% light transmission for the led panel light;
- Pendant, ceiling and recessed mounting methods for options;
- Oxidation resistant, elegant and durable.

Product Details



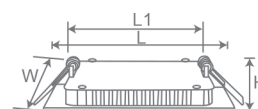
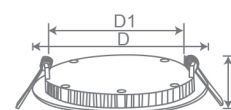
Application



Amusement park/Theater lighting/
Shopping mall/Restaurant hotel/
Meeting room etc



Item No.	Power	Size(DxL/LxWxH)	Hole(D1/L1xW1)	Temperature Color
GL-002-YB06	6W	φ100x30mm	φ85mm	6400K/4500K/2700K
GL-002-YB12	12W	φ160x30mm	φ140mm	6400K/4500K/2700K
GL-002-YB15	15W	φ200x30mm	φ180mm	6400K/4500K/2700K
GL-002-YB18	18W	φ200x30mm	φ180mm	6400K/4500K/2700K
GL-002-FB06	6W	100x100x30mm	85x85mm	6400K/4500K/2700K
GL-002-FB12	12W	160x160x30mm	140x140mm	6400K/4500K/2700K
GL-002-FB15	15W	200x200x30mm	180x180mm	6400K/4500K/2700K
GL-002-FB18	18W	200x200x30mm	180x180mm	6400K/4500K/2700K



LED Panel Light

Double color glass panel light



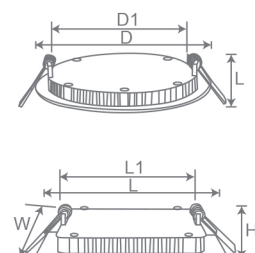
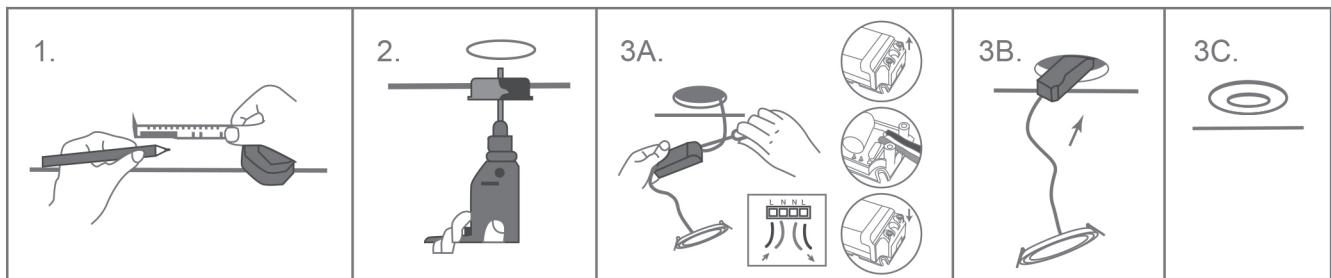
GL-003-FS



GL-003-YS

Features

- Energy saving, environmental friendly;
- Directly instead of traditional device of ceiling light;
- Easy to intall. Dirctly contact to AC110V or AC220V,no need power supply;
- No UV or infra-red radiation, no mercury or lead, eco-friendly, no danger of broken led panel light panel glass;
- Be equipped with short circuit, open circuit, lighting stroke, power surge, overcurrent, over-voltage, overheat etc. protection circuit.



Item No.	Power	Size(DxL/LxWxH)	Hole(D1/L1xW1)	Temperature Color
GL-003-YS10	8W+2W	φ130x13mm	φ75mm	2 Color
GL-003-YS15	12W+3W	φ160x13mm	φ120mm	2 Color
GL-003-YS20	16W+4W	φ180x13mm	φ160mm	2 Color
GL-003-FS10	8W+2W	130x130x13mm	75x75mm	2 Color
GL-003-FS15	12W+3W	160x160x13mm	120x120mm	2 Color
GL-003-FS20	16W+4W	180x180x13mm	160x160mm	2 Color



LED Panel Light

Surface round & square panel light



GL-004-MY GL-004-MF

■ Features

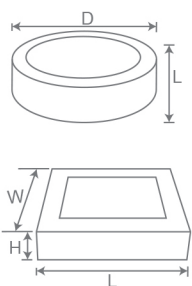
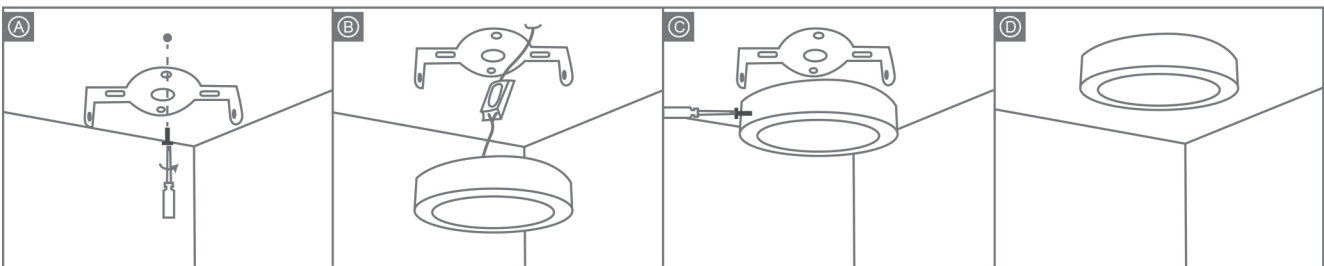
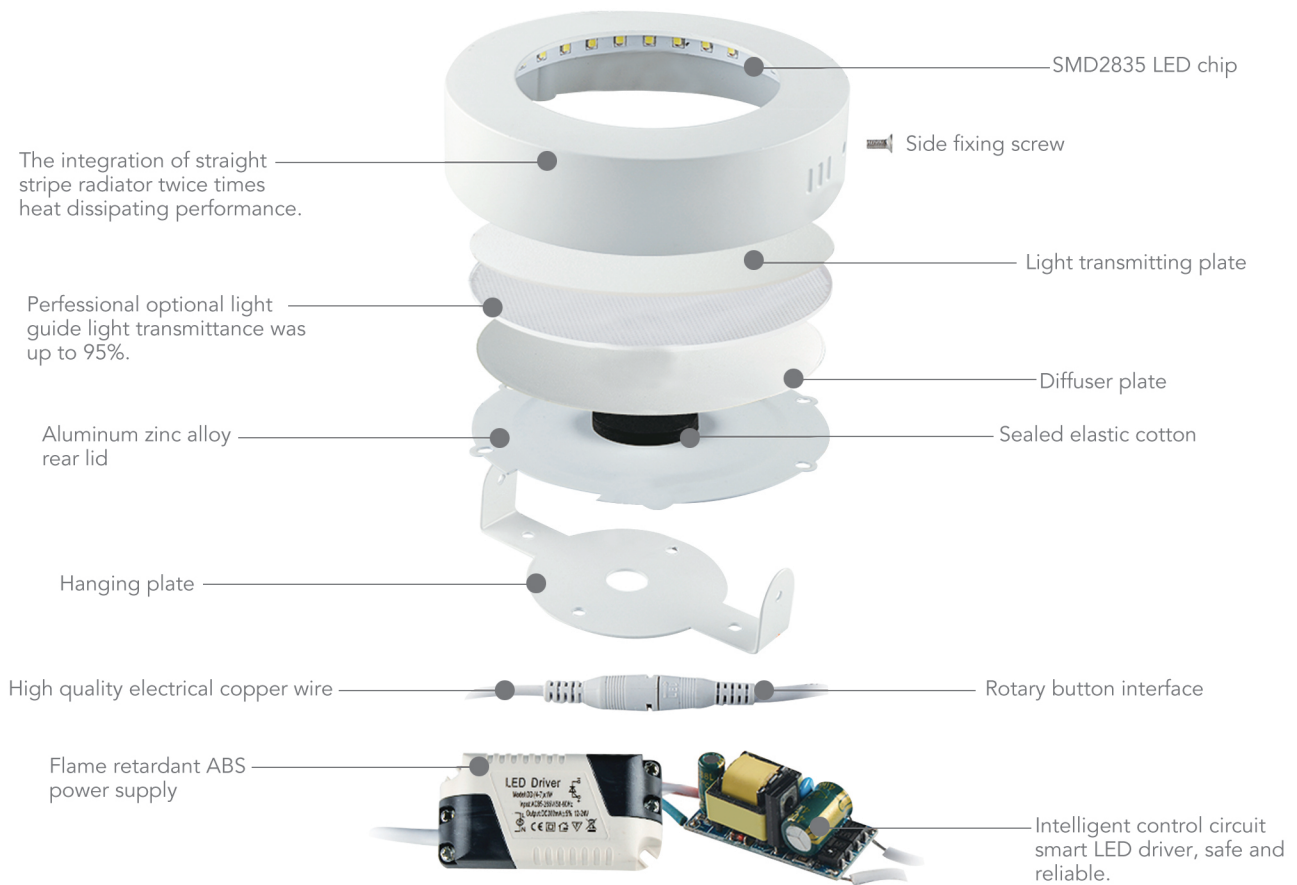
- Aluminium frame with good heat conduction;
- Matched with constant current driver;
- Eco-friendly, energy-saving and high luminous efficacy;
- No flickering, no humming;
- No electric wave;
- Installation way: Recessed, mounted or suspended by fixing bracket on the back;
- Very easy to instal. Can instal it on wall or any surface place.



Applications

- 1-New house decoration;
- 2-Office decoration;
- 3-Kitchen room;
- 4-Bathroom.





Item No.	Power	Size(DxL/LxWxH)	Beam Angle	Temperature Color
GL-004-MY06	6W	φ120x35mm	180°	6400K/4500K/2700K
GL-004-MY12	12W	φ170x38mm	180°	6400K/4500K/2700K
GL-004-MY18	18W	φ225x35mm	180°	6400K/4500K/2700K
GL-004-MY24	24W	φ300x35mm	180°	6400K/4500K/2700K
GL-004-MF06	6W	120x120x35mm	180°	6400K/4500K/2700K
GL-004-MF12	12W	170x170x38mm	180°	6400K/4500K/2700K
GL-004-MF18	18W	225x225x35mm	180°	6400K/4500K/2700K
GL-004-MF24	24W	300x300x35mm	180°	6400K/4500K/2700K

LED Panel Light

Ceiling panel light



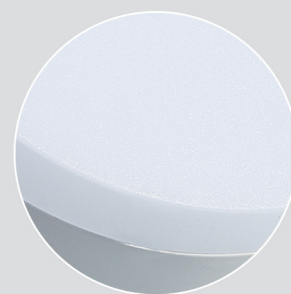
GL-005-FX

GL-005-YX

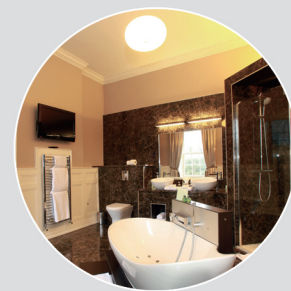
Features

- Adopt imported light guide plate, light transmission rate at 95% and uniformity ratio of illuminance is at 90%, soft, comfortable and bright light alleviate eye fatigue;
- Unique electronic design principles. If one led fail, the remaining LEDs will still work;
- Reasonable scientific light distribution design, uniform luminous, no shadow, no flickering, no harm to eyes and can have the exact light effect like fluorescent lamp;
- No electromagnetic interference, no UV, no heat radiation, no heavy metal elements such as mercury.

Product Details



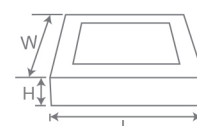
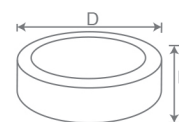
Application



Living room/Kitchen/School/Hospital/
Show room/Factory/Warehouse/
Supermarket/Department store etc



Item No.	Power	Size(DxL/LxWxH)	Beam Angle	Temperature Color
GL-005-YX06	6W	φ90x55.5mm	360°	6400K/4500K/2700K
GL-005-YX12	12W	φ120x55.5mm	360°	6400K/4500K/2700K
GL-005-YX18	18W	φ180x55.5mm	360°	6400K/4500K/2700K
GL-005-YX24	24W	φ220x55.5mm	360°	6400K/4500K/2700K
GL-005-FX06	6W	90x90x55.5mm	360°	6400K/4500K/2700K
GL-005-FX12	12W	120x120x55.5mm	360°	6400K/4500K/2700K
GL-005-FX18	18W	180x180x55.5mm	360°	6400K/4500K/2700K
GL-005-FX24	24W	220x220x55.5mm	360°	6400K/4500K/2700K

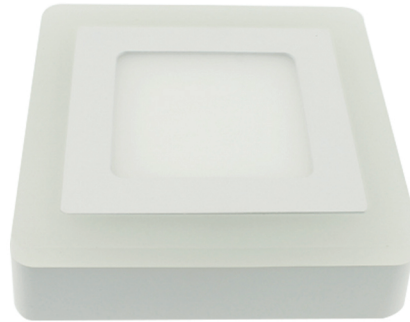


LED Panel Light

Double color ceiling panel light



GL-006-YL

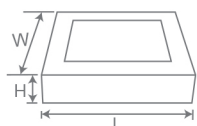
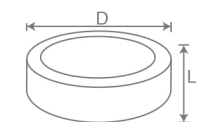


GL-006-FL

■ Features

- LED panel light adopts super bright LED as its luminous body;
- The anodized aluminum frame is stylish and fashionable with everlasting color;
- Excellent thermal management can effectively guarantee the LED's long-term stability;
- The front panel board is high translucent acrylic, which ensures the light even, soft and high transmittance;
- Using high quality electronic parts and components, the actual power factor can reach to 95%;
- External power supply, more stable, good heat dissipation;
- Pure white, warm white, cool white, red, green, blue, yellow, and RGB available.

■ Application



Item No.	Power	Size(DxL/LxWxH)	Beam Angle	Temperature Color
GL-006-YL05	3W+2W	φ105x40mm	180°	6400K/4500K/2700K
GL-006-YL09	6W+3W	φ145x40mm	180°	6400K/4500K/2700K
GL-006-YL16	12W+4W	φ195x40mm	180°	6400K/4500K/2700K
GL-006-YL24	18W+6W	φ240x40mm	180°	6400K/4500K/2700K
GL-006-FL05	3W+2W	105x105x40mm	180°	6400K/4500K/2700K
GL-006-FL09	6W+3W	145x145x40mm	180°	6400K/4500K/2700K
GL-006-FL16	12W+4W	195x195x40mm	180°	6400K/4500K/2700K
GL-006-FL24	18W+6W	240x240x40mm	180°	6400K/4500K/2700K



LED Panel Light

Square panel light

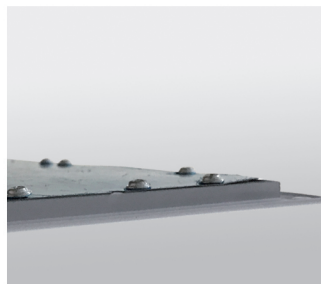


GL-007-MB

GL-008-MB

■ Features

- High brightness SMD LED chip;
- High light conducting efficiency and more even and soft light distribution;
- Wide voltage, wide frequency range constant current circuit;
- Junction temperature of LED is controlled in ideal range (T_J<60°C, ambient temperature T_a=25°C);
- Brightness decay less than 5% after 3 years' regular usage.



Applications

- 1-Conference / meeting room;
- 2-Factory & office;
- 3-Commercial purpose;
- 4-Residential & institution building;
- 5-School, college & university;
- 6-Supermarket, warehouse, hospital.

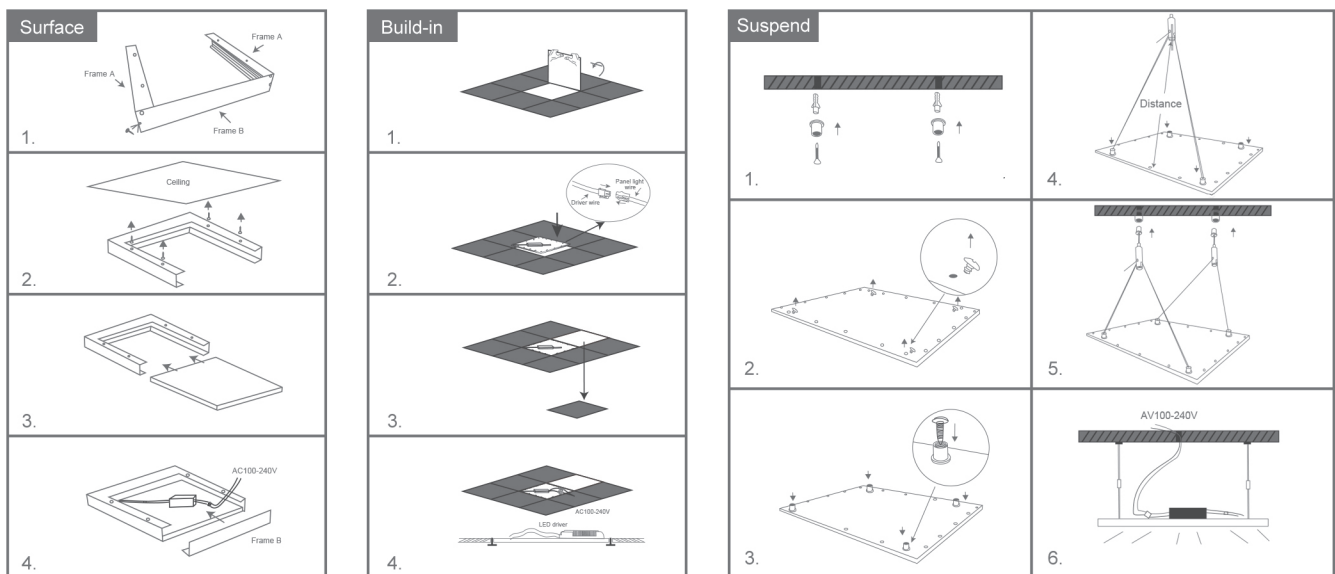




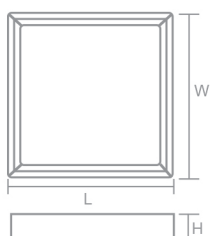
GL-008-MB

GL-007-MB

Installation of panle light:



Item No.	Power	LED Type	Size(LxWxH)	Temperature Color
GL-007MB	18W	SMD3014x180PCS	150x600x11mm	6400K/4500K/2700K
GL-007MB	36W	SMD3014x360PCS	150x1200x11mm	6400K/4500K/2700K
GL-007MB	36W	SMD3014x360PCS	400x400x11mm	6400K/4500K/2700K
GL-007MB	48W	SMD3014x360PCS	625x625x11mm	6400K/4500K/2700K
GL-008-MB	18W	SMD3014x180PCS	150x600x32mm	6400K/4500K/2700K
GL-008-MB	36W	SMD3014x360PCS	150x1200x32mm	6400K/4500K/2700K
GL-008-MB	36W	SMD3014x360PCS	400x400x35mm	6400K/4500K/2700K





LED Ceiling&Down Light

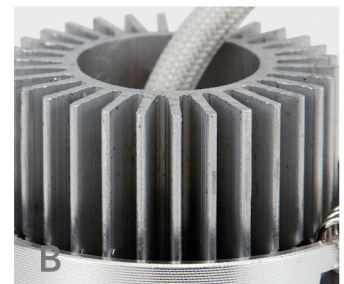
LED Ceiling light



GL-008-TH

■ Features

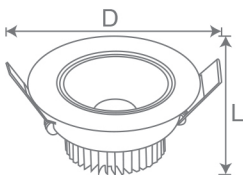
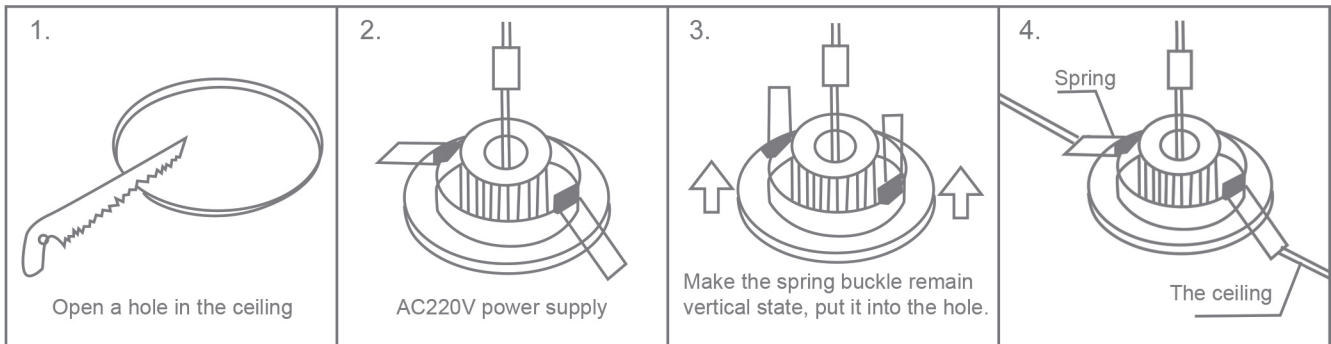
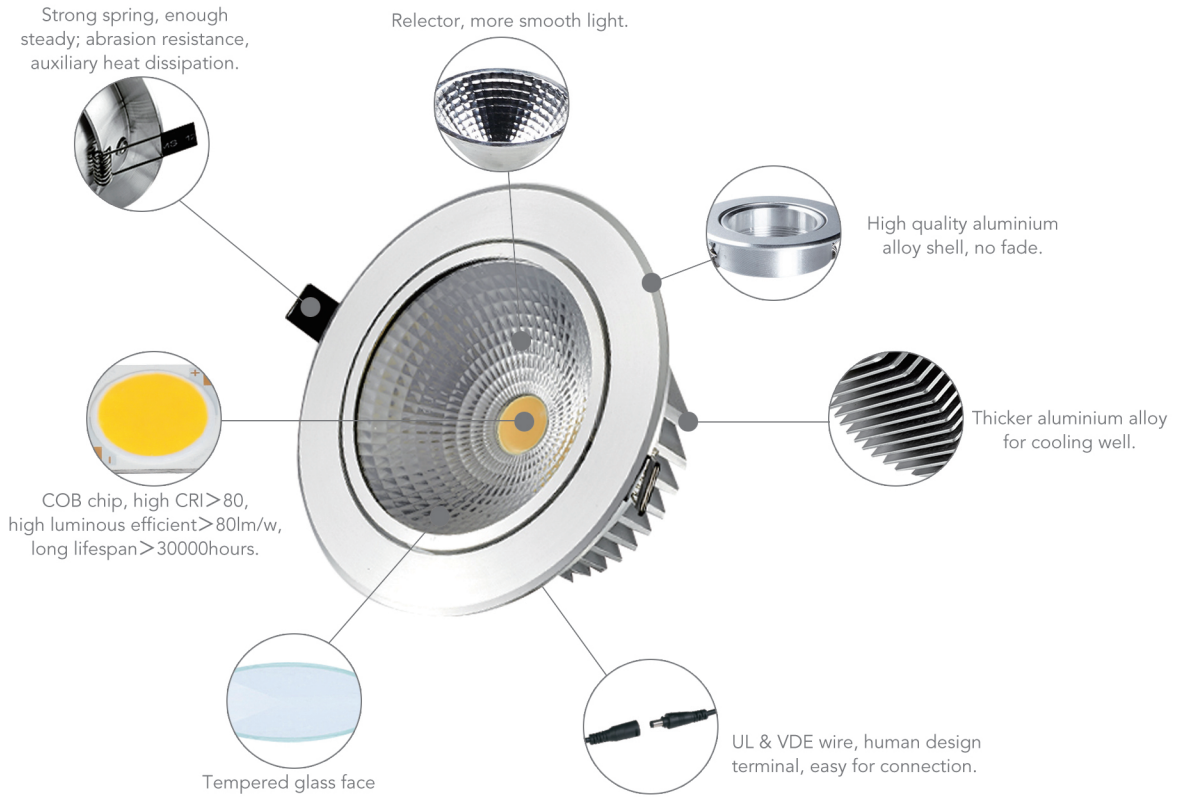
- Embedded energy-saving luminaries, power source are attached;
- High-purity aluminum lamp housing and brushed aluminum craft, implement high quality requirement;
- Protection for ballast from short-circuit, open-circuit and defective lamp;
- High temperature resistant iron and plastic fixture with powder coating, anticorrosive, solid and durable;
- Reasonable configuration, light weight, easy installation and maintenance;
- High color rendering index. True color expression.



Applications

- 1-Corridor, office, shopping mall, display window and inner lighting;
- 2-Reception room, lobby, hotel room lighting;
- 3-Museum, exhibition hall, art gallery exhibit lighting;
- 4-Bathroom, kitchen room and living room lighting.





Item No.	Power	Material	LED Type	Size(DxL)	Hole
GL-008-THA	3W	Aluminium+Glass	COB	φ82x60mm	φ75mm
GL-008-THA	5W	Aluminium+Glass	COB	φ82x55mm	φ75mm
GL-008-THA	7W	Aluminium+Glass	COB	φ105x55mm	φ95mm
GL-008-THA	10W	Aluminium+Glass	COB	φ105x55mm	φ95mm
GL-008-THA	15W	Aluminium+Glass	COB	φ105x55mm	φ110mm
GL-008-THA	18W	Aluminium+Glass	COB	φ135x55mm	φ110mm
GL-008-THB	3W	Aluminium+Glass	COB	φ82x60mm	φ75mm
GL-008-THB	5W	Aluminium+Glass	COB	φ82x55mm	φ75mm
GL-008-THB	7W	Aluminium+Glass	COB	φ105x55mm	φ95mm

LED Ceiling&Down Light

LED Down light



GL-009-TD

■ Features

- Good heat dissipation: stable body, aluminum housing, aluminum print circuit board;
- Isolated driver, input voltage: AC100-240V/50-60Hz, the voltage is available for different countries request;
- No UV light to avoid insects around;
- Low heat, high brightness, and works well under harsh conditions;
- This light is the most widely used light, can be applied to both indoor and outdoor.

Product Details



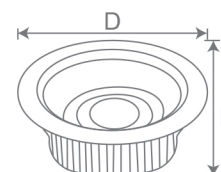
Application



Recess lighting/Office/Mall/Hall/KTV/
Plazas/Bar/Exhibition show/
Shop windows/Back lighting etc.



Item No.	Power	Material	LED Type	Size(DxL)	Hole
GL-009-TD	10W	Aluminium+Glass	COB	φ105x65mm	φ95mm
GL-009-TD	15W	Aluminium+Glass	COB	φ145x75mm	φ130mm
GL-009-TD	20W	Aluminium+Glass	COB	φ170x70mm	φ145mm
GL-009-TD	25W	Aluminium+Glass	COB	φ195x95mm	φ175mm
GL-009-TD	30W	Aluminium+Glass	COB	φ230x108mm	φ205mm
GL-009-TD	40W	Aluminium+Glass	COB	φ230x108mm	φ205mm
GL-009-TD	50W	Aluminium+Glass	COB	φ230x108mm	φ205mm
GL-009-TD	60W	Aluminium+Glass	COB	φ230x108mm	φ205mm



LED Ceiling&Down Light

LED Down light



GL-009-TDB

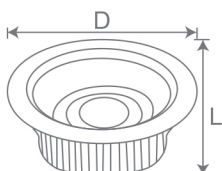


GL-009-TDC

Application



Item No.	Power	Material	LED Type	Size(DxL)	Hole
GL-009-TDB	5W	Aluminium+Glass	COB	φ100x57mm	φ85-90mm
GL-009-TDB	10W	Aluminium+Glass	COB	φ130x48mm	φ110-115mm
GL-009-TDB	15W	Aluminium+Glass	COB	φ160x50mm	φ145mm
GL-009-TDB	20W	Aluminium+Glass	COB	φ190x55mm	φ170mm
GL-009-TDB	30W	Aluminium+Glass	COB	φ220x50mm	φ205mm
GL-009-TDC	3W	Aluminium+Glass	COB 11mm	φ90x45m	φ75mm
GL-009-TDC	5W	Aluminium+Glass	COB 20mm	φ105x45mm	φ90mm
GL-009-TDC	7W	Aluminium+Glass	COB 32mm	φ120x45mm	φ105mm
GL-009-TDC	10W	Aluminium+Glass	COB 32mm	φ130x55mm	φ110mm
GL-009-TDC	12W	Aluminium+Glass	COB 32mm	φ145x53mm	φ125mm
GL-009-TDC	15W	Aluminium+Glass	COB 32mm	φ165x53mm	φ145mm
GL-009-TDC	20W	Aluminium+Glass	COB 42mm	φ195x60mm	φ175mm
GL-009-TDC	30W	Aluminium+Glass	COB 60mm	φ225x60mm	φ200mm



LED Ceiling&Down Light

LED Down light



GL-009-TDD

■ Features

- High quality diecasting aluminum shell, thicker heat dissipation, durability, anti-corrosion;
- Integrated design, easy to install;
- High CRI and high brightness, lighting softly and low decay;
- Environmental friendly, no UV and IR radiation and does not contain lead, mercury and other pollution elements;
- Low heat and power consumption, best energy saving, safe and efficient.

Product Details



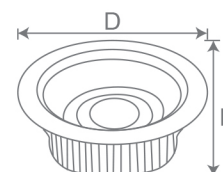
Application



Recess lighting/Office/Mall/Hall/KTV/
Plazas/Bar/Exhibition show/
Shop windows/Back lighting etc.



Item No.	Power	Material	LED Type	Size(DxL)	Hole
GL-009-TDD	5W	Aluminium+Glass	COB	φ80.5x32mm	φ73mm
GL-009-TDD	7W	Aluminium+Glass	COB	φ80.5x32mm	φ73mm
GL-009-TDD	10W	Aluminium+Glass	COB	φ120x45mm	φ100mm
GL-009-TDD	15W	Aluminium+Glass	COB	φ172x45mm	φ150mm
GL-009-TDD	20W	Aluminium+Glass	COB	φ190x50mm	φ170mm
GL-009-TDD	30W	Aluminium+Glass	COB	φ225x50mm	φ205mm

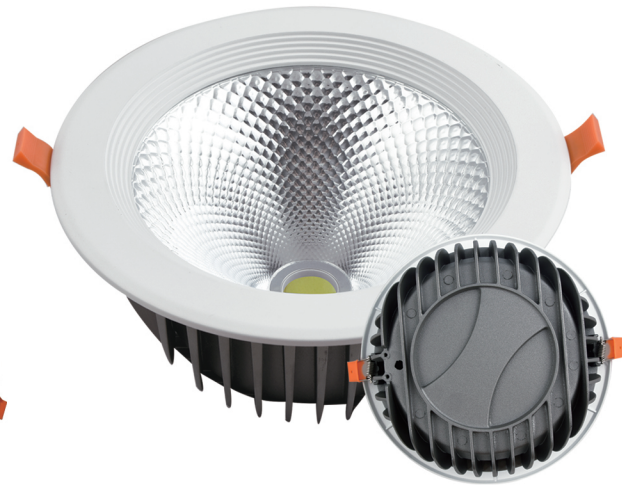


LED Ceiling&Down Light

LED Down light



GL-009-TDE

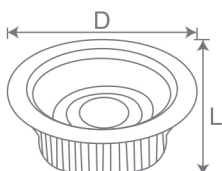


GL-009-TDF

Application

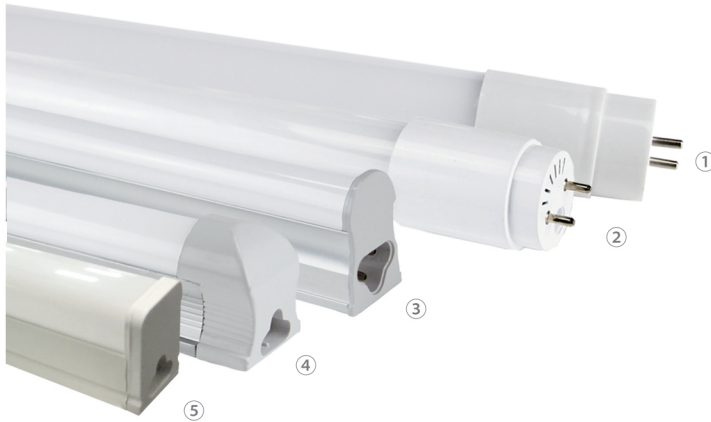


Item No.	Power	Material	LED Type	Size(DxL)	Hole
GL-009-TDE	5W	Aluminium+Glass	COB	φ90x45mm	φ75mm
GL-009-TDE	7W	Aluminium+Glass	COB	φ90x45mm	φ75mm
GL-009-TDE	10W	Aluminium+Glass	COB	φ134x60mm	φ125mm
GL-009-TDE	15W	Aluminium+Glass	COB	φ166x57.5mm	φ152mm
GL-009-TDE	20W	Aluminium+Glass	COB	φ194.5x62mm	φ175mm
GL-009-TDE	30W	Aluminium+Glass	COB	φ225x66mm	φ205mm
GL-009-TDF	10W	Aluminium+Glass	COB 11mm	φ90x42mm	φ75mm
GL-009-TDF	15W	Aluminium+Glass	COB 17mm	φ120x62mm	φ105mm
GL-009-TDF	30W	Aluminium+Glass	COB 24mm	φ165x70mm	φ145mm
GL-009-TDF	60W	Aluminium+Glass	COB 24mm	φ225x100mm	φ200mm



LED Fluorescent Tube

T5/T8



- ① GL-010-T8-P ② GL-010-T8-G ③ GL-010-T5-F
- ④ GL-010-T8-F ⑤ GL-010-FG-T8

■ Features

- Directly installing, no modification, no need rewire;
- Running without ballast and starter, instant start, no flickering, no humming;
- Thickened 0.9mm aluminum radiator for heat dissipation;
- Energy saving up to 80% high intensity;
- Inner power efficiency more than 87%;
- Heat protection system, can work under unstable voltage.

Product Details



Application



Commercial lighting/Office/Hospital/
Supermarket/School/Home etc.



Item No.	Power	LED Type	Material	Base	Beam Angle	Size(DxL)
GL-010-T5-F	9W	SMD3014	Aluminum+Plastic	-	120°	φ16x600mm
GL-010-T5-F	18W	SMD3014	Aluminum+Plastic	-	120°	φ16x1200mm
GL-010-T8-F	9W	SMD2835	Aluminum+Plastic	-	180°	φ26x600mm
GL-010-T8-F	18W	SMD2835	Aluminum+Plastic	-	180°	φ26x1200mm
GL-010-T8-G	9W	SMD2835	Glass	G13	300°	φ26x600mm
GL-010-T8-G	18W	SMD2835	Glass	G13	300°	φ26x1200mm
GL-010-T8-G	22W	SMD2835	Glass	G13	300°	φ26x1200mm
GL-010-T8-P	22W	SMD2835	Plastic	G13	330°	φ26x600mm
GL-010-T8-P	9W	SMD2835	Plastic	G13	330°	φ26x1200mm
GL-010-T8-P	18W	SMD2835	Plastic	G13	330°	φ26x1500mm
GL-010-FG-T8	9W	SMD2835	Plastic	G13	330°	600mm
GL-010-FG-T8	18W	SMD2835	Plastic	G13	330°	1200mm

LED Fluorescent Tube

Waterproof

LED Fluorescent Tube



GL-011-SF



GL-011-GS



GL-011-SF-A

■ Features

- Waterproof, dustproof and blastproof;
- Suit both indoor and outdoor uses;
- Without opening the lampshade for direct wiring;
- All kinds of ways to install: lifting or back installation.

■ Application



Item No.	Power	Voltage	Material	Lumen	Size(LxWxH)	Temperature Color
GL-011-SF-A	10W	85-265V	Aluminum+Plastic	800lm	300x75x25mm	6000K
GL-011-SF-A	18W	85-265V	Aluminum+Plastic	1440lm	600x75x25mm	6000K
GL-011-SF-A	26W	85-265V	Aluminum+Plastic	2080lm	900x75x25mm	6000K
GL-011-SF-A	36W	85-265V	Aluminum+Plastic	2880lm	1200x75x25mm	6000K
GL-011-SF	18W	85-265V	Plastic	1440-1530lm	656x80x90mm	6000K
GL-011-SF	36W	85-265V	Plastic	2880-3060lm	1260x80x90mm	6000K
GL-011-GS1	18W	85-265V	Plastic	1440lm	656x80x90mm	6000K
GL-011-GS1	36W	85-265V	Plastic	2880lm	1260x80x90mm	6000K
GL-011-GS1	58W	85-265V	Plastic	4640lm	1564x66x90mm	6000K
GL-011-GS2	18W	85-265V	Plastic	1440lm	656x115x90mm	6000K
GL-011-GS2	36W	85-265V	Plastic	2880lm	1260x115x90mm	6000K
GL-011-GS2	58W	85-265V	Plastic	4640lm	1564x106x90mm	6000K

LED Reflector Bulb

COB spotlight bulb



① GL-012-GU10

② GL-012-E27

③ GL-012-GU5.3

④ GL-012-MR16

Features

- Shell material: Aluminum alloy;
- Dimmable: No;
- No heavy metal and harmful gas, no flicker;
- Isolated constant current driver with long lifespan;
- Better heat resistance and less cooling;
- Small and big beam angle can be available;
- Operating temperature: -20 degrees centigrade ~75 degrees centigrade.

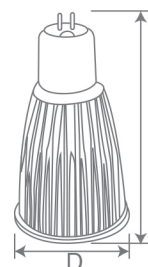
Product Details

Application

Entertainment lighting/Architectural lighting/ City beautification/Portalbe lighting/Hotel/Dining-room/Meeting room/drawing room/Showroom/ Corridor/Telephone booth/Studio and exhibition etc.



Item No.	Power	Voltage	Beam angle	Base	Size(DxL)
GL-012-GU10	3W	AC85-265V	120°/60°	GU10	φ50x60mm
GL-012-GU10	5W	AC85-265V	120°/60°	GU10	φ50x69mm
GL-012-GU10	7W	AC85-265V	120°/60°	GU10	φ50x85mm
GL-012-GU10	10W	AC85-265V	120°/60°	GU10	φ50x94mm
GL-012-E27	3W	AC85-265V	120°/60°	E27	φ50x65mm
GL-012-E27	5W	AC85-265V	120°/60°	E27	φ50x74mm
GL-012-E27	7W	AC85-265V	120°/60°	E27	φ50x90mm
GL-012-E27	10W	AC85-265V	120°/60°	E27	φ50x99mm
GL-012-GU5.3	3W	AC85-265V	120°/60°	GU5.3	φ50x62mm
GL-012-GU5.3	5W	AC85-265V	120°/60°	GU5.3	φ50x71mm
GL-012-GU5.3	7W	AC85-265V	120°/60°	GU5.3	φ50x87mm
GL-012-GU5.3	10W	AC85-265V	120°/60°	GU5.3	φ50x96mm
GL-012-MR16	3W	DC12V	120°/60°	MR16	φ50x53mm
GL-012-MR16	5W	DC12V	120°/60°	MR16	φ50x62mm
GL-012-MR16	7W	DC12V	120°/60°	MR16	φ50x78mm



LED Reflector Bulb

AR111/MR16/GU10

LED Reflector Bulb



GL-013-AR111A



GL-016-MR16A



GL-016-MR16B



GL-016-MR16C



GL-016-MR16D

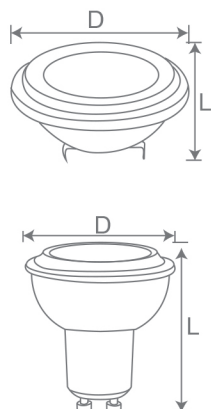


GL-016-GU10E



GL-016-GU10F

Application



Item No.	Power	LED Type	Beam angle	Base	Temperature Color
GL-013-AR111A	15W	COB	36°	G53/GU10	6400/4500/2700K
GL-016-MR16A	4/5/6W	SMD/COB	120°/38°	GU5.3/MR16	6400/4500/2700K
GL-016-MR16B	5/6/7W	COB	38°/60°	MR16	6400/4500/2700K
GL-016-MR16C	7W	SMD2835x7PCS	38°	MR16	6400/4500/2700K
GL-016-MR16C	8W	SMD2835x8PCS	38°	MR16	6400/4500/2700K
GL-016-MR16D	3/4W	SMD2835x6PCS	120°	MR16	6400/4500/2700K
GL-016-MR16D	5/7W	SMD2835x10PCS	120°	MR16	6400/4500/2700K
GL-016-GU10E	7W	SMD2835x7PCS	38°	GU10	6400/4500/2700K
GL-016-GU10E	8W	SMD2835x8PCS	38°	GU10	6400/4500/2700K
GL-016-GU10F	3/4W	SMD2835x6PCS	120°	GU10	6400/4500/2700K
GL-016-GU10F	5/7W	SMD2835x10PCS	120°	GU10	6400/4500/2700K

LED Reflector Bulb

R39/R50/R63/R80/R90



GL-014-R50

GL-014-R63

GL-014-R80

■ Features

- Pretty appearance;
- LED bulb with super high lumen;
- High brightness with good heat sink For LED bulb;
- This LED bulb light is easy to install and use;
- Super waterproof ability;
- Lsolated driver, non-isolated driver available;
- Low power consumption, lower heating during operation;
- No mercury, enviromental protection.

Product Details



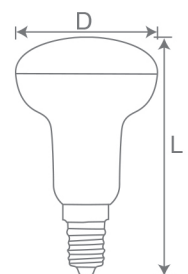
Application



Hotel/Hall/Chamber/Showcase/
Restaurant/Office/Reading room/
Atmosphere lighting etc.



Item No.	Power	LED Type	Beam angle	Base	Size(DxL)
GL-014-R39	3/4W	SMD	180°	E14	φ39x68mm
GL-014-R50	5/6W	SMD	180°	E14	φ50x87mm
GL-014-R63	8/10W	SMD	180°	E27	φ63x100mm
GL-014-R80	12/15W	SMD	180°	E27	φ80x115mm
GL-014-R90	18W	SMD	180°	E27	φ90x125mm



LED Reflector Bulb

PAR20/PAR30/PAR38

LED Reflector Bulb



GL-015-PAR20A



GL-015-PAR30A



GL-015-PAR38A



GL-015-PAR20B

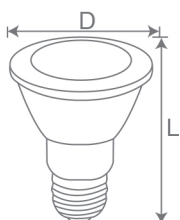


GL-015-PAR30B



GL-015-PAR38B

Application



Item No.	Power	LED Type	Beam angle	Base	Size(DxL)
GL-015-PAR20A	8W	SMD/COB	36°	E27/B22	φ68x90mm
GL-015-PAR20B	10W	COB	38°	E27	φ63x83mm
GL-015-PAR30A	12/15W	SMD/COB	36°	E27/B22	φ100x96mm
GL-015-PAR30B	15W	COB	38°	E27	φ95x95mm
GL-015-PAR38A	18/20W	SMD/COB	36°	E27/B22	φ126x132mm
GL-015-PAR38B	20W	COB	38°	E27	φ120x130mm

LED Energy Saving Bulb

Spiral shape



GL-017-LX(SMD)

GL-017-LX(COB)

■ Features

- 360° beam angle;
- Heat dissipation hole design;
- PBT fireproof material, aluminum LED plate;
- Energy saving up to 90%;
- Semiconductor chip, no filament, not afraid vibration.

Product Details



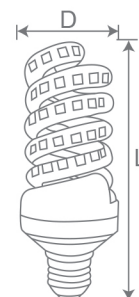
Application



Table lamp/Furniture lighting/
Ceiling light lamps/Floor light/
New house decoration bulb lamp etc.



Item No.	Power	LED Type	Material	Base	Size(DxL)
GL-017-LX	5W	SMD/COB	Glass+Plastic	E27	φ40x100mm
GL-017-LX	7W	SMD/COB	Glass+Plastic	E27	φ40x105mm
GL-017-LX	9W	SMD/COB	Glass+Plastic	E27	φ48x115mm
GL-017-LX	12W	SMD/COB	Glass+Plastic	E27	φ61x145mm
GL-017-LX	15/18W	SMD/COB	Glass+Plastic	E27	φ61x160mm
GL-017-LX	24W	SMD/COB	Glass+Plastic	E27	φ81x190mm
GL-017-LX	30/36W	SMD/COB	Glass+Plastic	E27	φ81x200mm



LED Energy Saving Bulb

U shape



GL-018-2U



GL-018-3U

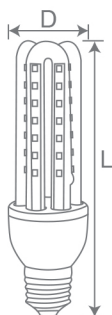


GL-018-4U

■ Features

- Low power consumption, high power efficiency;
- No UV or IR radiation, conducive to Eye protection;
- Soft light, no flickering;
- Easy to install with E27 base;
- Width lighting angle of 360°;
- High temp-resistant engineering fireproof materials adopted.

■ Application



Item No.	Power	LED Type	Material	Base	Size(DxL)
GL-018-2U	3W	SMD	Glass+Plastic	E27	φ34x104mm
GL-018-3U	5W	SMD	Glass+Plastic	E27	φ43x112mm
GL-018-3U	7W	SMD	Glass+Plastic	E27	φ40x134mm
GL-018-3U	9W	SMD	Glass+Plastic	E27	φ43x137mm
GL-018-3U	12W	SMD	Glass+Plastic	E27	φ51x170mm
GL-018-4U	16W	SMD	Glass+Plastic	E27	φ58x180mm
GL-018-4U	20W	SMD	Glass+Plastic	E27	φ63x186mm
GL-018-4U	24W	SMD	Glass+Plastic	E27	φ67x240mm
GL-018-4U	30W	SMD	Glass+Plastic	E27	φ71x255mm

LED Energy Saving Bulb

Corn Light



GL-019-YMA

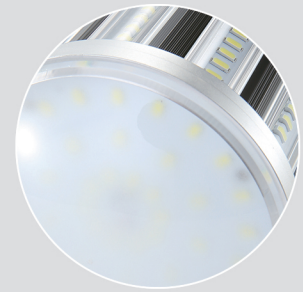


GL-019-YMB

■ Features

- High brightness, small volume, light weight, replace conventional CFL, HPS, MH, etc;
- High power, high efficiency, low energy consumption;
- Constant current;
- Using high quality aluminum alloy and pc cover, excellent structure design fit for dissipation; not contain lead, mercury and other pollution elements;
- Using light transmission rate of 90% or more of the cover, uniform beam angle, no glare, high brightness, high luminous efficiency;
- Compared to incandescent lamp, it saves energy more than 80% and saves 50% energy than fluorescent lamp.

Product Details



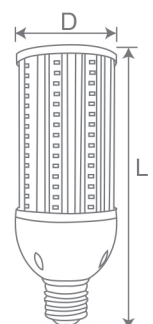
Application



Home/Shopping center/Office/Bar/
Street lighting/Pathway lighting/
Garden lighting etc.



Item No.	Power	LED Type	LEDs	Material	Base	Size(DxL)
GL-019-YMA	27W	SMD5730	81PCS	Alu.+PC	E40	φ93x196mm
GL-019-YMA	36W	SMD5730	108PCS	Alu.+PC	E40	φ93x221mm
GL-019-YMA	45W	SMD5730	135PCS	Alu.+PC	E40	φ93x246mm
GL-019-YMA	54W	SMD5730	162PCS	Alu.+PC	E40	φ93x271mm
GL-019-YMA	80W	SMD5730	240PCS	Alu.+PC+Fan	E40	φ120x314mm
GL-019-YMA	100W	SMD5730	288PCS	Alu.+PC+Fan	E40	φ120x334mm
GL-019-YMB	80W	SMD5630	250PCS	Alu.+PC	E39	φ130x295mm
GL-019-YMB	100W	SMD5630	288PCS	Alu.+PC	E39	φ130x325mm
GL-019-YMB	125W	SMD5630	336PCS	Alu.+PC	E39	φ130x359mm



LED Energy Saving Bulb

High Power energy saving lamp



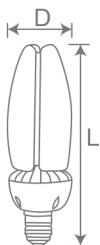
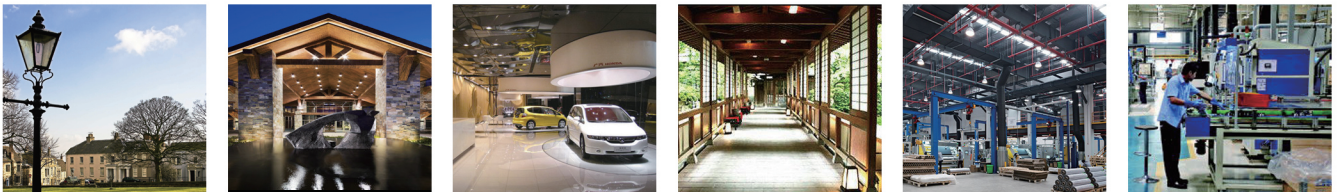
GL-030-FT

■ Features

- New design;
- SMD 5630 chip;
- No fan heat dissipation solution;
- 360 degree beam angle;
- Flame retardant material;
- IP65 waterproof design;
- Transparent cover and diffuser cover both available.



■ Application



Item No.	Power	Voltage	Material	Base	Size(DxL)
GL-030-FT	30W	AC100-277V	Aluminium	E26/E27/E39/E40	φ83x257mm
GL-030-FT	40W	AC100-277V	Aluminium	E26/E27/E39/E40	φ83x257mm
GL-030-FT	50W	AC100-277V	Aluminium	E26/E27/E39/E40	φ83x257mm

LED Bulb

A50/A55/A60/A70/A75/A80



Plastic



Plastic+Aluminium



Aluminium

■ Features

- LED Bulb low heat, low thermal resistance, steady lighting, high brightness and CRI;
- Body with excellent thermal managing design;
- Ultra energy efficient, easy installation;
- No mercury, less CO₂ emission, eco-friendly to the environment;
- Anti-shock, anti-moisture, no RF interference;
- Longevity of service and minimal maintenance;
- Energy-saving, environment friendly, and save 80% of energy compared with incandescent bulb.

Product Details



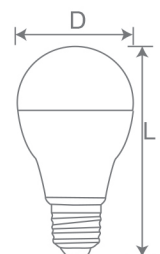
Application



Villas/House/High-end stores/Office/
Specialty store/High-end leisure/
Entertainment club etc.



Item No.	Power	Voltage	Beam Angle	Base	Size(DxL)
GL-029-A50	5W	AC100-265V	240°	E27	φ50x89mm
GL-029-A55	6W	AC100-265V	240°	E27	φ55x101mm
GL-029-A60	5/6/7/8/9/10W	AC100-265V	240°	E27/B22	φ60x111mm
GL-029-A60	15/18W	AC100-265V	220°	E27/B22	φ60x125mm
GL-029-A70	15W	AC100-265V	240°	E27/B22	φ70x130mm
GL-029-A70	20W	AC100-265V	240°	E27/B22	φ70x149mm
GL-029-A75	16/18W	AC85-265V	240°	E27/B22	φ75x140mm
GL-029-A80	18W	AC85-265V	240°	E27/B22	φ80x147mm
GL-029-A80	24W	AC85-265V	240°	E27/B22	φ80x165mm



LED Bulb

Voice control & sensor bulb



GL-022-SK

■ Features

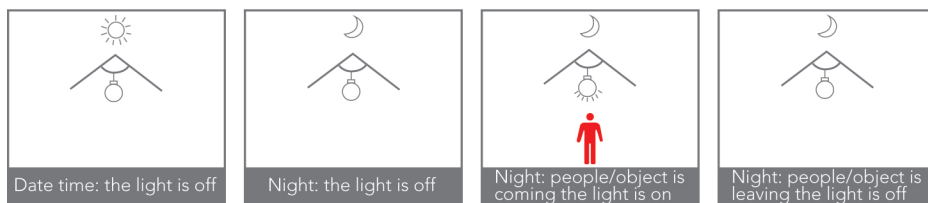
- Adopting photosensitive technology, in case of light the lamp will not light, completely achieve the goal of energy saving;
- Using acoustic sensor technology, in case of dark, as long as there are footsteps, open the sound, such as closing will light up automatically, automatic delay can be put out;
- Switch to reach 1 million times, life of 30000 hours.

■ Application

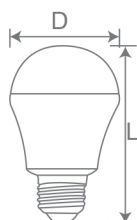


■ Features

- This product energy saving ,durable, high brightness,easy installation;
- Does not light during the day, night to lights, people go lamp, intelligence;
- Have the function of human body induction, actual daily light length added up to less than half an hour, built-in human body sensor and optial devices;
- Applicable to the channel, the bathroom, garage, basement, hotels, villas, residential corridor, public field as well as the field of light to save electricity.



GL-023-GY



Item No.	Power	Voltage	Material	Base	Size(DxL)
GL-022-SK	3W	AC100-240V	Plastic+Aluminium	E27	φ48x81mm
GL-022-SK	5W	AC100-240V	Plastic+Aluminium	E27	φ56x96mm
GL-022-SK	7W	AC100-240V	Plastic+Aluminium	E27	φ68x107mm
GL-023-GY	3W	AC100-240V	Plastic+Aluminium	E27	φ60x110mm
GL-023-GY	5W	AC100-240V	Plastic+Aluminium	E27	φ60x110mm
GL-023-GY	7W	AC100-240V	Plastic+Aluminium	E27	φ60x110mm

LED Bulb

T30/T37/T50/T60/T70/T80/T100/T120/T140/T150



GL-024-T30



GL-024-T70A



GL-024-T70B

■ Features

- 100% recyclable, no mercury or other hazardous materials;
- Low carbon emission, high luminous efficiency, Low heat generation;
- No radiation safe for body, No flickering & good for eyes;
- Good heat dissipation and unbreakable.

Product Details

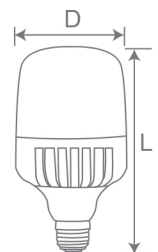


Application

Building decoration/Amusement park/
Theater lighting/Emergency
hallway lighting/Shopping mall/
Restaurant/Hotel/Meeting room/
School/Library/Warehouse etc.



Item No.	Power	Voltage	Material	Base	Size(DxL)
GL-024-T30	6W	AC220-240V	Plastic+Aluminium	E27/E14	φ30x101mm
GL-024-T37	9W	AC220-240V	Plastic+Aluminium	E27/E14/G24	φ37x120mm
GL-024-T50	15W	AC220-240V	Plastic+Aluminium	E27	φ50x145mm
GL-024-T50A	5W	AC220-240V	Plastic+Aluminium	E27/B22	φ50x99.5mm
GL-024-T60A	9W	AC220-240V	Plastic+Aluminium	E27/B22	φ60x119mm
GL-024-T70A	13W	AC220-240V	Plastic+Aluminium	E27/B22	φ70x130mm
GL-024-T80A	18W	AC220-240V	Plastic+Aluminium	E27/B22	φ80x146mm
GL-024-T100A	28W	AC220-240V	Plastic+Aluminium	E27/B22	φ100x187mm
GL-024-T120A	35W	AC220-240V	Plastic+Aluminium	E27/B22	φ120x205mm
GL-024-T140A	45W	AC220-240V	Plastic+Aluminium	E27/B22	φ140x260mm
GL-024-T80B	30W	AC100-265V	Aluminium	E27/B22	φ80x152mm
GL-024-T100B	40W	AC100-265V	Aluminium	E27/B22	φ100x182mm
GL-024-T120B	50W	AC100-265V	Aluminium	E27/B22	φ120x218mm
GL-024-T140B	60W	AC100-265V	Aluminium	E27/B22	φ140x240mm
GL-024-T150B	80W	AC100-265V	Aluminium	E27/B22	φ150x267mm



LED Bulb

Bird cage bulb & High Power



GL-025-NL



GL-025-HP

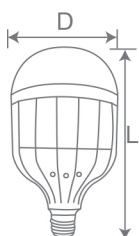
LED Bulb

■ Features

- Fast light brighting, no delay and flicker;
- Energy-saving: saving 80% than the ordinary lamp;
- Green and health protection, no pollution, more comfortable for our vision;
- Environment-friendly and no UV or IR radiation;
- Wide range of available operating voltage and low consumption;
- Easy to install and maintain, replacement of traditional bulbs and no subsidiary fixture.



Item No.	Power	Voltage	Material	Base	Size(DxL)
GL-025-NL	15W	AC85-265V	Plastic	E27/B22	φ94x160mm
GL-025-NL	18W	AC85-265V	Plastic	E27/B22	φ94x160mm
GL-025-NL	24W	AC85-265V	Plastic	E27/B22	φ115x212mm
GL-025-NL	36W	AC85-265V	Plastic	E27/B22	φ115x212mm
GL-025-NL	50W	AC85-265V	Plastic	E27/B22	φ148x225mm
GL-025-NL	60W	AC85-265V	Plastic	E27/B22	φ141x226.5mm
GL-025-NL	80W	AC85-265V	Plastic	E27/B22	φ141x226.5mm
GL-025-HP	50W	AC85-265V	Aluminium+PC	E27	φ120x240mm
GL-025-HP	80W	AC85-265V	Aluminium+PC	E27	φ150x260mm
GL-025-HP	100W	AC85-265V	Aluminium+PC	E27	φ150x288mm



LED Bulb

UFO bulb

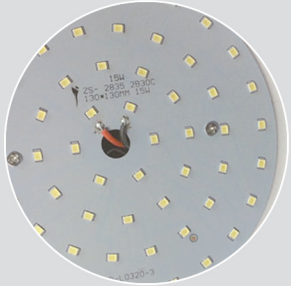



GL-026-UFO-A


■ Features

- Energy saving, compared to traditional energy saving lamp on the condition of same illumination, save up to 70%~80%;
- Green and eco-friendly without mercury, Low noise, no UV and IR in the beam, a safe cold-light source, safe for human;
- Light is soft and uniform, safe to eyes;
- Easy installation and conventional use, direct replacement of traditional bulb and low maintenance.

Product Details

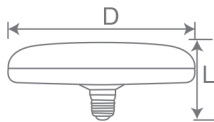
Application



Hotel/Department/Conference/
 Meeting room/Factory/Office/
 Commercial purpose/Residential/
 School/College etc.



Item No.	Power	Voltage	Beam Angle	Base	Size(DxL)
GL-026-UFO-A	12W	AC100-265V	200°	E27/B22	φ120x79mm
GL-026-UFO-A	18W	AC100-265V	200°	E27/B22	φ150x79mm
GL-026-UFO-A	24W	AC100-265V	200°	E27/B22	φ200x79mm
GL-026-UFO-A	36W	AC100-265V	200°	E27/B22	φ250x79mm



LED Bulb

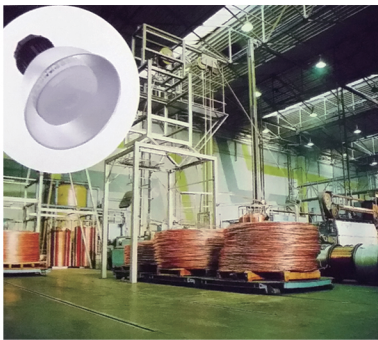
Circular ring & Factory lamp



GL-027-HG

■ Features

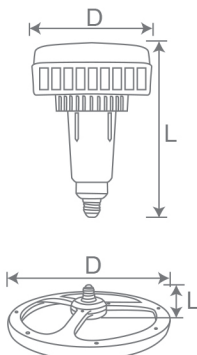
- Original and fashion design;
- Using intelligent IC control circuit, wide voltage design, overload and under voltage protection is more stable and more secure;
- No flicker and glare, can protect our eyes;
- Perfect optical properties;



Work shop, warehouse, mine, supermarket, exhibition hall, garage , gasoline station, design park and other lage space lighting.



GL-028-GC



Item No.	Power	Voltage	Beam Angle	Base	Size(DxL)
GL-027-HG	6W	AC85-265V	360°	E27	φ160x90mm
GL-027-HG	12W	AC85-265V	360°	E27	φ260x90mm
GL-027-HG	18W	AC85-265V	360°	E27	φ360x90mm
GL-028-GC	40W	AC180-265V	180°	E27/E40	φ130x194mm
GL-028-GC	60W	AC180-265V	180°	E27/E40	φ160x226mm
GL-028-GC	80W	AC180-265V	180°	E40	φ190x268mm
GL-028-GC	100W	AC180-265V	180°	E40	φ190x268mm



LED Bulb

G45



G45

■ Features

- Pretty appearance as quality;
- High brightness with good heat sink For LED bulb;
- This LED bulb Light is Easy to install and use;
- Energy Efficient: Reduces operating cost up to 75-80%;
- Environmentally friendly: no mercury, no lead, no phosphorous powders;
- Low maintenance: no ballast needed, no radio frequency interference;
- Durable: withstands frequent switching & is cold temperature compatible;
- No noise, no flicker: Instant start for healthy lighting.



Applications

- 1-Home and office lighting;
- 2-Commercial and industrial lighting;
- 3-School and college lighting;
- 4-Showcase lighting, bar lighting, display case accent, artworking lighting, mood lighting, and amusement park accent;
- 5-Warehouse lighting, hotel and restaurant lighting;
- 6-For bedside lamp use and dresser lighting.



LED Bulb

G80/G90/G120



G80

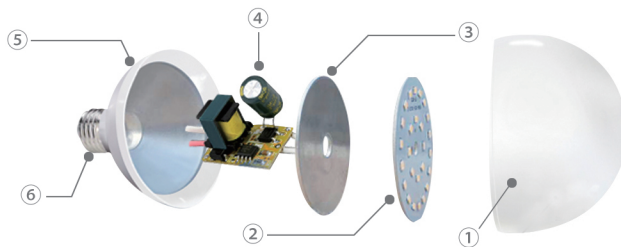
G95

G120A

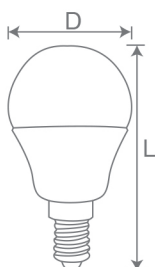
G120B

LED Bulb

Application



- ① High quality pc cover
- ② More lighting redending chip
- ③ Anti-heat conduction plate
- ④ Insolated driver power supply
- ⑤ High strength thermal plastic aluminum lamp body
- ⑥ Super base socket(E14/E27)



Item No.	Power	Voltage	Material	Base	Size(DxL)
GL-032-G45	3/4/5/6W	AC100-240V	Plastic+Aluminium	E14/E27/B22	φ45x81mm
GL-032-G45	7W	AC100-240V	Plastic+Aluminium	E14/E27/B22	φ45x85mm
GL-032-G80	10W	AC100-240V	Plastic+Aluminium	E27/B22	φ80x118mm
GL-032-G95	12W	AC100-240V	Plastic+Aluminium	E27/B22	φ95x138mm
GL-032-G120A	15/18W	AC100-240V	Plastic+Aluminium	E27/B22	φ120x160mm
GL-032-G120B	20W	AC100-240V	Aluminium	E27/B22	φ120x160mm

LED Bulb

High power

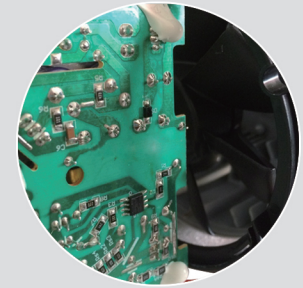


GL-033-B8H

■ Features

- High quality aluminum body;
- Below the aluminum part we use super thermal conductive plastics;
- Internal silent cooler fan;
- Around the fan, we designed cooling holes to realize the air convection to help dissipating the heat;
- E27/E40 socket, easy to replace of CFL, HID, HPS.

Product Details



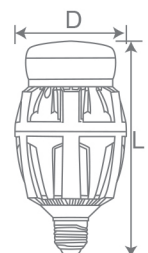
Application



Home/Residential lighting/Reading light/Business lighting/Motion sensor lighting/Hotel/Bar/Night club etc.



Item No.	Power	Voltage	Beam Angle	Base	Size(DxL)
GL-033-B8H	40W	AC170-250V	140°	E27	φ78x152mm
GL-033-B8H	70W	AC170-250V	140°	E27/E40	φ88x168mm
GL-033-B8H	100W	AC170-250V	140°	E27/E40	φ98x188mm
GL-033-B8H	150W	AC170-250V	140°	E40	φ114x230mm



LED Bulb

C35/C37/C35T



GL-034-C35



GL-034-C37



GL-034-C35T



Ceramic

Application



Item No.	Power	Voltage	Beam Angle	Base	Size(DxL)
GL-034-C35	2W	AC100-265V	240°	E14/E27	φ35x93mm
GL-034-C35	5W	AC100-265V	240°	E14/E27	φ35x103mm
GL-034-C37	3/4/5/6W	AC100-265V	240°	E14/E27	φ37x99mm
GL-034-C37	4/5/6W	AC100-265V	270°	E14/E27	φ37x106mm
GL-034-C37	6W	AC100-265V	240°	E14/E27	φ37x110mm
GL-034-C37	7W	AC100-265V	240°	E14/E27	φ37x114mm
GL-034-C35T	3/4/5/6W	AC100-265V	240°	E14/E27	φ35x125mm
GL-034-C35T	6W	AC100-265V	240°	E14/E27	φ35x127mm
GL-034-C35T	7W	AC100-265V	240°	E14/E27	φ35x132mm

LED Bulb

G4/G9

GL-035-G4-1.5W07



Power: 1.5W
Lumen: 120LM
Voltage: AC/DC 12V
Size: 5x12x37mm
Material: PC

GL-035-G4-2.5W07



Power: 2W
Lumen: 180LM
Voltage: AC/DC 12V
Size: 12x16x44mm
Material: PC

GL-035-G4-1.5W01



Power: 1.5W
Lumen: 100LM
Voltage: AC/DC 12V
Size: φ9.5x34.5mm
Material: Silicon

GL-035-G4-1.5W03



Power: 1.5W
Lumen: 100LM
Voltage: AC/DC 12V
Size: φ9.5x30mm
Material: Silicon

GL-035-G4-1.5W04



Power: 1.5W
Lumen: 100LM
Voltage: AC/DC 12V
Size: φ11x33mm
Material: PC

GL-035-G4-2W05



Power: 2W
Lumen: 200LM
Voltage: AC/DC 12V
Size: φ10x37mm
Material: Silicon

GL-035-G4-2.5W02-3



Power: 2W
Lumen: 180LM
Voltage: AC/DC 12V
Size: φ12x37mm
Material: Silicon

GL-035-G4-3W06



Power: 3W
Lumen: 280LM
Voltage: AC/DC 12V
Size: φ15x44mm
Material: Ceramic

GL-035-G4-4W01



Power: 4W
Lumen: 350LM
Voltage: AC/DC 12V
Size: φ15x46mm
Material: Ceramic

GL-035-G4-4W01-1



Power: 4W
Lumen: 350LM
Voltage: AC/DC 12V
Size: φ18x54mm
Material: Ceramic

GL-035-G9-2.5W04



Power: 2.5W
Lumen: 220LM
Voltage: 220-240V
Size: 12x16x18mm
Material: PC

GL-035-G9-4.5W03



Power: 4.5W
Lumen: 380LM
Voltage: 220-240V
Size: 12x16x60mm
Material: PC





GL-035-G9-2.5W08

Power: 2.5W
Lumen: 250LM
Voltage: 220-240V
Size: 10x14x44mm
Material: Ceramic



GL-035-G9-2.5W06

Power: 2.5W
Lumen: 250LM
Voltage: 220-240V
Size: 9x15x50mm
Material: Silicon



GL-035-G9-3W02-11

Power: 3W
Lumen: 350LM
Voltage: 220-240V
Size: φ15x60mm
Material: Filament



GL-035-G9-4.5W02

Power: 4.5W
Lumen: 420LM
Voltage: 220-240V
Size: 9x14x47mm
Material: PC



GL-035-G9-3.5W02

Power: 4W
Lumen: 350LM
Voltage: 220-240V
Size: φ15x50mm
Material: Ceramic+PC



GL-035-G9-3.5W04

Power: 3.5W
Lumen: 300LM
Voltage: 220-240V
Size: φ15x60mm
Material: Ceramic+PC



GL-035-G9-4.5W01

Power: 5W
Lumen: 400LM
Voltage: 220-240V
Size: φ16x55mm
Material: Ceramic



GL-035-G9-6W01

Power: 6W
Lumen: 550LM
Voltage: 220-240V
Size: φ15x60mm
Material: Ceramic+PC



GL-035-G9-8W01

Power: 8W
Lumen: 750LM
Voltage: 220-240V
Size: φ18x62mm
Material: Ceramic+PC



GL-035-G9-2.5W07

Power: 2.5W
Lumen: 200LM
Voltage: 100-260V
Size: φ15x53mm
Material: Ceramic+PC



GL-035-G9-3W02-2

Power: 3W
Lumen: 200LM
Voltage: 100-260V
Size: φ15x50mm
Material: Silicon



GL-035-G9-3.5W01

Power: 3.5W
Lumen: 250LM
Voltage: 220-240V
Size: φ18x48mm
Material: Ceramic+PC



GL-035-G9-3.5W02

Power: 4W
Lumen: 350LM
Voltage: 100-260V
Size: φ18x48mm
Material: Ceramic



GL-035-G9-4W02

Power: 4W
Lumen: 350LM
Voltage: 220-240V
Size: φ15x50mm
Material: Silicon



GL-035-G9-4W01

Power: 4W
Lumen: 350LM
Voltage: 220-240V
Size: φ15x50mm
Material: Silicon



LED Filament Bulb

C35/C35T/G45/A60/S14



C35A

C35T

G45

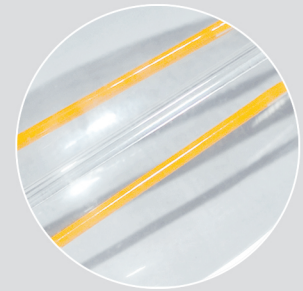
A60

S14

Features

- Easy installation;
- High shock & vibration resistance;
- Moisture resistant;
- No buzzing, no flickering, no mercury/ poisons;
- No radio frequency interference;
- Environmentally friendly;
- Beam angle is 360°;
- The glass cover can be: clear, frost, white.

Product Details



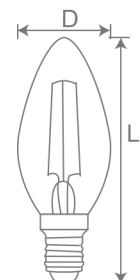
Application



Hotel lighting/Library lighting/
School lighting/Bank lighting/
Office lighting/Home/ etc.



Item No.	Power	LEDs	Voltage	Material	Base	Size(DxL)
GL-036-C35A	1/2/4W	1/2/4	AC220-240V	Glass	E14/E27	φ35x100mm
GL-036-C35TA	1/2/4W	1/2/4	AC220-240V	Glass	E14/E27	φ35x125mm
GL-036-C35TB	4W	4	AC220-240V	Glass+Plastic	E14	φ35x140mm
GL-036-G45	1/2/4W	1/2/4	AC220-240V	Glass	E14/E27	φ45x75mm
GL-036-A60	2/3.5W	2	AC220-240V	Glass	E27/B22	φ60x105mm
GL-036-A60	4/5W	4	AC220-240V	Glass	E27/B22	φ60x105mm
GL-036-A60	6/8W	6/8	AC220-240V	Glass	E27/B22	φ60x105mm
GL-036-S14	1/2W	1/2	AC220-240V	Glass	E26/E27	φ45x89mm



LED Filament Bulb

G80/G95/G125



G80
(30mm filament)

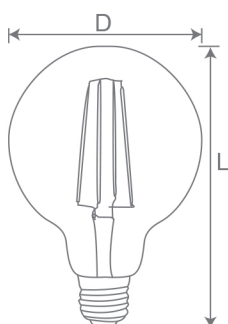


G80
(60mm filament)

Application



Item No.	Power	LEDs	Voltage	Material	Base	Size(DxL)
GL-037-G80	2W	2	AC220-240V	Glass	E27/B22	φ80x120mm
GL-037-G80	4/5W	4	AC220-240V	Glass	E27/B22	φ80x120mm
GL-037-G80	6W	6	AC220-240V	Glass	E27/B22	φ80x120mm
GL-037-G80	8W	8	AC220-240V	Glass	E27/B22	φ80x120mm
GL-037-G80	10W	12	AC220-240V	Glass	E27/B22	φ80x120mm
GL-037-G95	2W	2	AC220-240V	Glass	E27/B22	φ95x135mm
GL-037-G95	4/5W	4	AC220-240V	Glass	E27/B22	φ95x135mm
GL-037-G95	6W	6	AC220-240V	Glass	E27/B22	φ95x135mm
GL-037-G95	8W	8	AC220-240V	Glass	E27/B22	φ95x135mm
GL-037-G95	10W	12	AC220-240V	Glass	E27/B22	φ95x135mm
GL-037-G125	2W	2	AC220-240V	Glass	E27/B22	φ125x170mm
GL-037-G125	4/5W	4	AC220-240V	Glass	E27/B22	φ125x170mm
GL-037-G125	6W	6	AC220-240V	Glass	E27/B22	φ125x170mm
GL-037-G125	8W	8	AC220-240V	Glass	E27/B22	φ125x170mm
GL-037-G125	10W	12	AC220-240V	Glass	E27/B22	φ125x170mm



LED Filament Bulb

R50R/R63R/R80R



GL-039-R50R

GL-039-R63R

■ Features

- 360 degree beam angle;
- Instant start hot LED filament bulb, no delay and flickers;
- IC Driver, constant current, safety guaranteed;
- Clear and durable glass;
- Different base for option.

Product Details



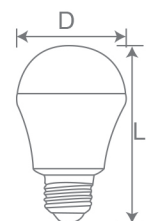
Application



Bathroom/Hall/Shopping mall/
Hotel/Restaurant/Library etc .



Item No.	Power	LEDs	Voltage	Base	Size(DxL)
GL-039-R50R	2W	2	AC220-240V	E14	φ50x83mm
GL-039-R63R	4W	4	AC220-240V	E27/B22	φ63x100mm
GL-039-R80R	4W	4	AC220-240V	E27/B22	φ80x115mm



LED Strip Light

SMD 3528/5050



IP20

Naked
Non-waterproof



IP64

Silicone Tube
Hollow



IP65

Epoxy resin or silicon
Only on surface



IP68

Silicon tube solid
Inside material option:
epoxy resin or PU



SMD3528

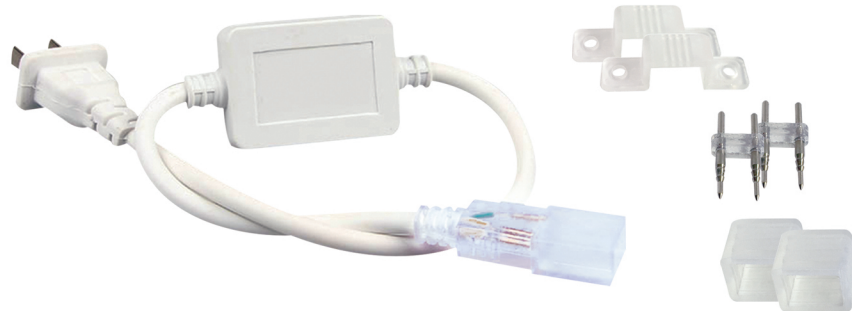


SMD5050

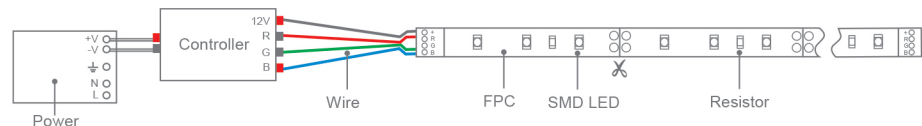
Features

- High voltage input, very soft FPC board, high brightness SMD 3528/5050;
- It is easy to install with 3M sticky back tape on the backside;
- High brightness, large viewing angle(120 degree), stable performance, light and flexible shape;
- 1 meter is a unit, within which there is one corresponding point(parallel point) for cutting arbitrarily;
- Low light decline and long lifespan;
- IP20/ IP64/ IP65/ IP68 waterproof, can be used for indoor and outdoor decoration and edge lighting.

Accessory:



How to connect controller:



Item No.	Voltage	LED Type	LEDs	IP	Color
GL-040-3528D	12V	SMD3528	60	IP20/IP64/IP65/IP68	White/ Warm white/ Red/ Yellow/ Blue/ Green
GL-040-3528S	12V	SMD3528	120	IP20/IP64/IP65/IP68	White/ Warm white/ Red/ Yellow/ Blue/ Green
GL-040-5050D	12V	SMD5050	30	IP20/IP64/IP65/IP68	White/ Warm white/ Red/ Yellow/ Blue/ Green
GL-040-5050S	12V	SMD5050	60	IP20/IP64/IP65/IP68	White/ Warm white/ Red/ Yellow/ Blue/ Green/ RGB
GL-040-5050GS	220V	SMD5050	60	IP20/IP64/IP65/IP68	White/ Warm white/ Red/ Yellow/ Blue/ Green

LED Strip Light

SMD 8520



V Type Reflector

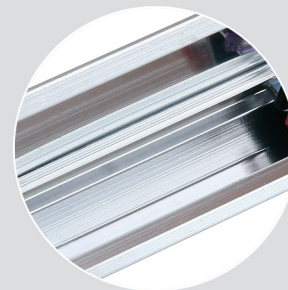
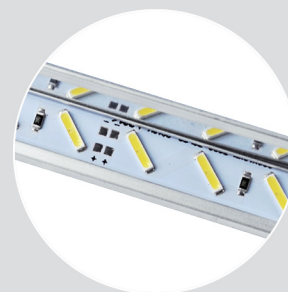
V Type Groove

U Type Groove

■ Features

- With perfect optical design, big view angle, high brightness;
- Uniform and soft luminosity distribution, no glare design;
- Using aluminum bar booth, fixed both ends' screws or neutral glass glue to paste up, hidden installation will be good;
- High-light effect, more energy-saving;
- DC 24V input, can be directly contact with the human body, safe operation, convenient maintenance;
- The outer shell is made of high quality aluminum alloy, the lamp board is made of aluminum board, and the multi-layer space is designed to ensure good heat dissipation effect and longer lifespan;
- Easy installation: Self-adhesive back with double side adhesive tape, so it can be fixed on any surface and in any shape easily.

Product Details

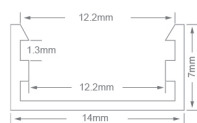


Application



Building outline wall decoration/
Advertising /City lighting/
Passageway sign lighting/House/
Park/Theater/Bar/Cabin/
Holiday decoration/
Background light

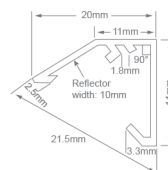
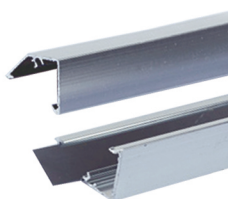
U/V Type Aluminium Groove



Flat U Type Groove



V Type Groove



V Type Reflector



V Type Groove with PC Cover

U/V Type Interface



270° V type corner



135° V type corner



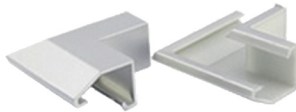
90° V type corner



180° V type through



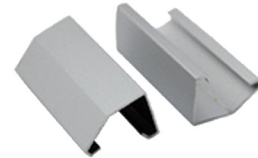
90° reflector corner



270° reflector corner



135° reflector corner

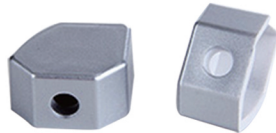


180° reflector through

U/V Type Plug



Clear plug for U type groove

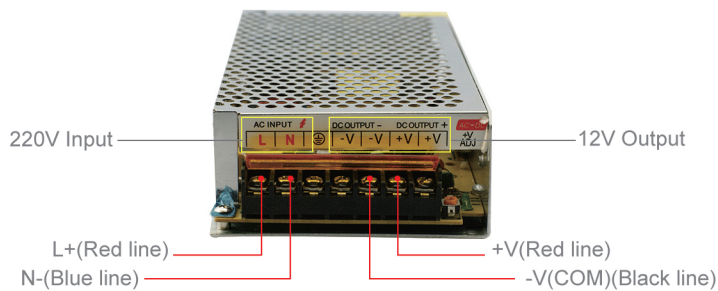


Plug for V type groove



Plug for U type groove

Switching Power Supply Driver



Item No.	Voltage	LED Type	LEDs	IP	Color Temperature
GL-041-8520D	DC12V	SMD8520	36	IP20/IP68	Warm white, Cool white, Pure white
GL-041-8520S	DC12V	SMD8520	72	IP20/IP68	Warm white, Cool white, Pure white