

高瑞电气

GAORUI ELECTRIC

CHANGZHOU GAORUI ELECTRIC CO.,LTD.

Factory Add: NiuTang Town, Wujin, Changzhou, Jiangsu, China

Tel: 0086-519-67890285

Fax: 0086-519-81081302

Website: www.lampshouse.com

Email: david@lampshouse.com





高瑞电气

GAORUI ELECTRIC



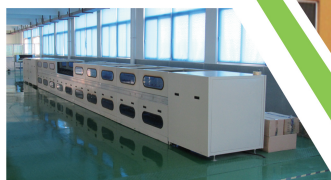
COMPANY PROFILE

Changzhou GaoRui Electric Co., Ltd. was established in 1990s, located in Changzhou, Jiangsu, China, with more than 20000 m² plant, more than 200 staffs.

Our factory focuses on the middle and high-end LED lighting products. Our main Item include: LED bulb; LED reflector bulb; LED energy saving lamp; LED filament bulb; LED strip light; LED panle light; LED fluorescent tube; LED ceiling and down light. Products are widely used in indoor lighting, home lighting, commercial shop decorative lighting, public places lighting and other applications.

Gaorui have more than 10 years of LED lighting R & D, production, sales experience; we cooperate with world famous manufacturers: CREE, Bridgelux, PHILIPS, Samsung and Mean Well and give 3 to 5 years warranty for products to our customer. And our company passed the 9001:2008 ISO international quality standard system certifications, the products passed the: CE, ETL, TUV, ERP, ROHS, SASO, INMETRO, NOM and other related certification.

We also have a professional and perfect pre-sale, sale, after-sales customer service and management system, our target is "satisfying every customer with fine-chosen materials, strict manufacturing technology, assured good quality and good service", the whole staffs from gaorui sincerely welcome the customer from all over the world to talk business and make cooperation with us. Hope we can be trustworthy partner in near future!



LONG LIFE ENERGY SAVING

 高瑞电气
GAORUI ELECTRIC
www.lampshouse.com



CERTIFICATE OF CONFORMITY

Electromagnetic Compatibility

Certificate No.: JQI17083007-1
 Report No.: JQI17083007-1
 Holder of Certificate: Changzhou Hua Er
 14711 Floor, East Changzhou, Jiang
 Manufacturer: Changzhou Gaoren
 No.131 Houde Rd Changzhou, Jiang
 Description of Product: LED DOWN Lp
 GR-1614-40W
 GR-1614-10W-12V
 GR-1614-10W-12V-7
 GR-1614-10W-12V-10
 GR-1614-10W-12V-15
 GR-1614-10W-12V-20
 Model No.: GR-1614-10W-12V-10
 GR-1614-10W-12V-15
 GR-1614-10W-12V-20
 Description of Object: Rating: 85-265V
 Trade Name: FSE
 EN 55015: 2013
 EN 61000-3-2-2
 EN 61000-3-3-2
 EN 61547: 2009

This certificate of conformity is based on an evaluation of the Technical Report and documentation as at the Licensee's risk in conformity with Directive 2014/30/EU, in its latest amended version, referred to as the Electromagnetic Compatibility Directive.

Date: August 17, 2017
CE
 After preparation of the necessary technical documentation as well as the EC conformity declaration the required CE marking can be affixed on the product.

CERTIFICATE OF CONFORMITY

Electromagnetic Compatibility

Certificate No.: JQI17083007-2
 Report No.: JQI17083007-2
 Holder of Certificate: Changzhou Hua Er
 14711 Floor, East Changzhou, Jiang
 Manufacturer: Changzhou Gaoren
 No.131 Houde Rd Changzhou, Jiang
 Description of Product: LED BELB
 GR-1148-40W
 GR-1148-10W-12V
 GR-1148-10W-12V-10
 GR-1148-10W-12V-15
 GR-1148-10W-12V-20
 Model No.: GR-1148-10W-12V-10
 GR-1148-10W-12V-15
 GR-1148-10W-12V-20
 Description of Object: Rating: 85-265V
 Trade Name: FSE
 EN 55015: 2013
 EN 61000-3-2-2
 EN 61000-3-3-2
 EN 61547: 2009

This certificate of conformity is based on an evaluation of the Technical Report and documentation as at the Licensee's risk in conformity with Directive 2014/30/EU, in its latest amended version, referred to as the Electromagnetic Compatibility Directive.

Date: July 4, 2017
CE
 After preparation of the necessary technical documentation as well as the EC conformity declaration the required CE marking can be affixed on the product.

CERTIFICATE OF CONFORMITY

Low Voltage Directive

Certificate No.: JQI17083007-3
 Report No.: JQI17083007-3
 Holder of Certificate: Changzhou Hua Er
 14711 Floor, East Changzhou, Jiang
 Manufacturer: Changzhou Gaoren
 No.131 Houde Rd Changzhou, Jiang
 Description of Product: LED PANEL LIGHT
 GR-16007-72W
 GR-16007-36W-12V
 GR-16007-36W-12V-10
 GR-16007-36W-12V-15
 GR-16007-36W-12V-20
 Model No.: GR-16007-36W-12V-10
 GR-16007-36W-12V-15
 GR-16007-36W-12V-20
 Description of Object: Rating: 85-265V-50/60Hz, 270VMax.
 Trade Name: FSE
 EN 60900-3-2:2014
 EN 60900-3-2:2014
 EN 61547: 2009

This certificate of conformity is based on an evaluation of the Technical Report and documentation as at the Licensee's risk in conformity with Annex I of Council Directive 2006/95/EC, referred to as the low voltage directive.

Date: August 08, 2017
CE
 After preparation of the necessary technical documentation as well as the EC conformity declaration the required CE marking can be affixed on the product.

CERTIFICATE OF CONFORMITY

Electromagnetic Compatibility Directive 2014/30/EU

Certificate No.: JQI17083007-4
 Report No.: JQI17083007-4
 Holder of Certificate: Changzhou Hua Er International Trade Co., Ltd.
 14711 Floor, East Shesheng Plaza, Zhenjiang District, Changzhou, Jiangsu, China.
 Manufacturer: Changzhou Gaoren Electronic Co., Ltd.
 No.131 Houde Road, Nantang Town, Wujin District, Changzhou, Jiangsu, China.
 Description of Product: LED PANEL LIGHT
 GR-16007-72W
 GR-16007-36W-12V
 GR-16007-36W-12V-10
 GR-16007-36W-12V-15
 GR-16007-36W-12V-20
 Model No.: GR-16007-36W-12V-10
 GR-16007-36W-12V-15
 GR-16007-36W-12V-20
 Description of Object: Rating: 85-265V-50/60Hz, 270VMax.
 Trade Name: FSE
 EN 55015: 2013+A1:2015
 EN 61000-3-2: 2014
 EN 61000-3-3: 2014
 EN 61547: 2009

This certificate of conformity is based on an evaluation of a sample of the above mentioned product. Technical Report and documentation are at the Licensee's disposal. This is to certify that the tested sample is in conformity with Directive 2014/30/EU, in its latest amended version, referred to as the Electromagnetic Compatibility Directive.

Date: August 08, 2017
CE
 After preparation of the necessary technical documentation as well as the EC conformity declaration the required CE marking can be affixed on the product. Other relevant directives have to be observed.

CERTIFICATE OF CONFORMITY

Electromagnetic Compatibility Directive 2014/30/EU

Certificate No.: JQI170829974-2C
 Report No.: 629974-2S
 Holder of Certificate: Jia Hua Er Rui International Trade Co., Ltd.
 14711 Floor, East Shesheng Plaza, Zhenjiang District, Jiangsu, China.
 Manufacturer: Jia Hua Er Rui International Trade Co., Ltd.
 14711 Floor, East Shesheng Plaza, Zhenjiang District, Jiangsu, China.
 Description of Product: DOWN LIGHT
 GR-16007-72W
 GR-16007-36W-12V
 GR-16007-36W-12V-10
 GR-16007-36W-12V-15
 GR-16007-36W-12V-20
 Model No.: GR-16007-36W-12V-10
 GR-16007-36W-12V-15
 GR-16007-36W-12V-20
 Description of Object: Rating: 85-265V-50/60Hz, 270VMax.
 Trade Name: FSE
 EN 55015: 2013+A1:2015
 EN 61000-3-2: 2014
 EN 61000-3-3: 2014
 EN 61547: 2009

This certificate of conformity is based on an evaluation of a sample of the above mentioned product. Technical Report and documentation are at the Licensee's disposal. This is to certify that the tested sample is in conformity with Directive 2014/30/EU, in its latest amended version, referred to as the Electromagnetic Compatibility Directive.

Date: August 08, 2017
CE
 After preparation of the necessary technical documentation as well as the EC conformity declaration the required CE marking can be affixed on the product. Other relevant directives have to be observed.

CERTIFICATE OF CONFORMITY

Electromagnetic Compatibility Directive 2014/30/EU

Certificate No.: JQI17083007-2C
 Report No.: 629974-2S
 Holder of Certificate: Jia Hua Er Rui International Trade Co., Ltd.
 14711 Floor, East Shesheng Plaza, Zhenjiang District, Jiangsu, China.
 Manufacturer: Jia Hua Er Rui International Trade Co., Ltd.
 14711 Floor, East Shesheng Plaza, Zhenjiang District, Jiangsu, China.
 Description of Product: DOWN LIGHT
 GR-16007-72W
 GR-16007-36W-12V
 GR-16007-36W-12V-10
 GR-16007-36W-12V-15
 GR-16007-36W-12V-20
 Model No.: GR-16007-36W-12V-10
 GR-16007-36W-12V-15
 GR-16007-36W-12V-20
 Description of Object: Rating: 85-265V-50/60Hz, 270VMax.
 Trade Name: FSE
 EN 55015: 2013+A1:2015
 EN 61000-3-2: 2014
 EN 61000-3-3: 2014
 EN 61547: 2009

This certificate of conformity is based on an evaluation of a sample of the above mentioned product. Technical Report and documentation are at the Licensee's disposal. This is to certify that the tested sample is in conformity with Directive 2014/30/EU, in its latest amended version, referred to as the Electromagnetic Compatibility Directive.

Date: August 08, 2017
CE
 After preparation of the necessary technical documentation as well as the EC conformity declaration the required CE marking can be affixed on the product. Other relevant directives have to be observed.

Blister
packing



Contents

LED Panel Light	◀ 01-11
LED Bulb	◀ 12-31
LED Strip Light	◀ 32-38
LED Lamp	◀ 39-41
Moisture-proof lamps	◀ 42-49
LED Ceiling & Down Light	◀ 50-56
Sconces	◀ 57-70
Track lights	◀ 71-75
Emergency lights	◀ 76-78



LED Panel Light

Recessed round & square panel light

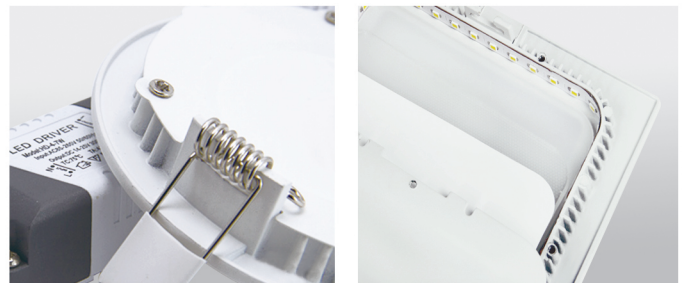


GL-001-YC

GL-001-FC

■ Features

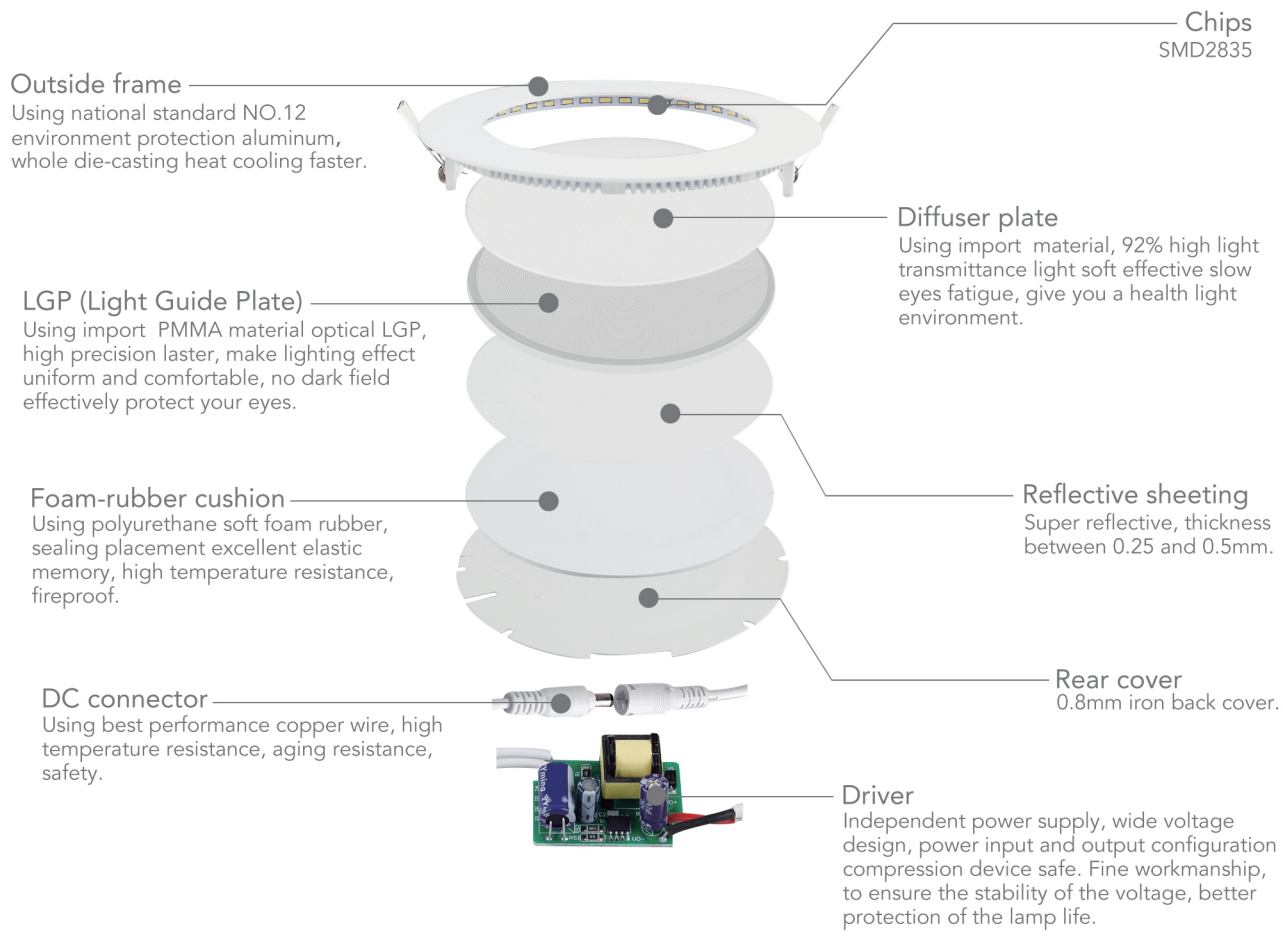
- Isolated Driver, non-isolated driver available;
- No mercury, environmental protection;
- The super-thin design: only 12mm thick;
- Aluminium frame with good heat conduction;
- Eco-friendly, energy-saving and high luminous efficacy;
- Instant start, no flickering, no humming;
- No electric wave;
- Installation way: recessed, mounted or suspended by fixing bracket on the back.



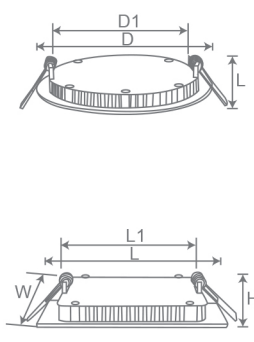
Applications

- 1-Hotel;
- 2-Conference/ meeting room/ showroom,
- 3-Factory& office;
- 4-Commercial complexe;
- 5-Residential/ institution building;
- 6-Public building, hosing and the underground garage;
- 7- School, hospital and all places that need energy saving and high brightness.





Item No.	Power	Size(DxL/LxWxH)	Hole(D1/L1xW1)	Temperature Color
GL-001-YC03	3W	φ85x13mm	φ70mm	6400K/4500K/2700K
GL-001-YC06	6W	φ120x13mm	φ100mm	6400K/4500K/2700K
GL-001-YC09	9W	φ147x13mm	φ120mm	6400K/4500K/2700K
GL-001-YC12	12W	φ170x13mm	φ120mm	6400K/4500K/2700K
GL-001-YC15	15W	φ200x13mm	φ180mm	6400K/4500K/2700K
GL-001-YC18	18W	φ200x13mm	φ205mm	6400K/4500K/2700K
GL-001-YC20	20W	φ225x13mm	φ210mm	6400K/4500K/2700K
GL-001-YC24	24W	φ300x13mm	φ280mm	6400K/4500K/2700K
GL-001-FC03	3W	85x85x13mm	70x70mm	6400K/4500K/2700K
GL-001-FC06	6W	120x120x13mm	100x100mm	6400K/4500K/2700K
GL-001-FC09	9W	147x147x13mm	120x120mm	6400K/4500K/2700K
GL-001-FC12	12W	170x170x13mm	120x120mm	6400K/4500K/2700K
GL-001-FC15	15W	200x200x13mm	180x180mm	6400K/4500K/2700K
GL-001-FC18	18W	200x200x13mm	205x205mm	6400K/4500K/2700K
GL-001-FC20	20W	225x225x13mm	210x210mm	6400K/4500K/2700K
GL-001-FC24	24W	300x300x13mm	280x280mm	6400K/4500K/2700K





LED Panel Light

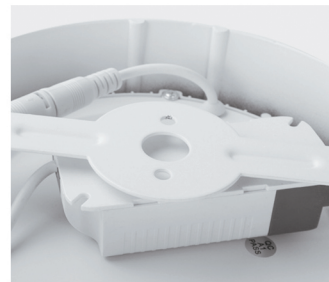
Surface round & square panel light



GL-004-MY GL-004-MF

■ Features

- Aluminium frame with good heat conduction;
- Matched with constant current driver;
- Eco-friendly, energy-saving and high luminous efficacy;
- No flickering, no humming;
- No electric wave;
- Installation way: Recessed, mounted or suspended by fixing bracket on the back;
- Very easy to instal. Can instal it on wall or any surface place.



Applications

- 1-New house decoration;
- 2-Office decoration;
- 3-Kitchen room;
- 4-Bathroom.



Application



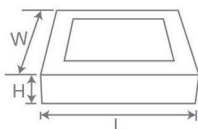
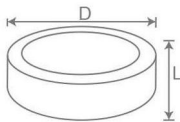
Hotel lighting/Library lighting/
School lighting/Bank lighting/
Office lighting/Home/ etc.



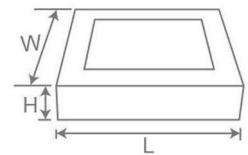
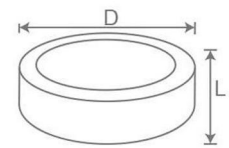
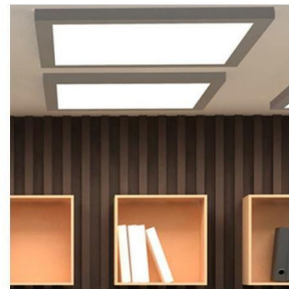
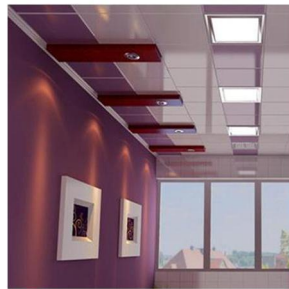
LED Panel Light

■ Features

- Concise and beautiful appearance, electrostatic coating;
- Optical level diffusion plate and guide plate;
- Light body, easy mounting;
- Diecasting Alumium+imported PMMA, over 97% light transmission for the led panel light;
- Pendant, ceiling and recessed mounting methods for options;
- Oxidation resistant, elegant and durable.



Item No.	Power	Size(D*L/L*W*H)	Hole(D1/L1*W1)	Temperature Color
GL-005-YX10	10W	φ100mm	50-75mm	3000-6500K
GL-005-YX18	18W	φ120mm	50-100mm	3000-6500K
GL-005-YX24	24W	φ170mm	50-145mm	3000-6500K
GL-005-YX32	32W	φ220mm	50-200mm	3000-6500K
GL-005-FX18	18W	φ118*40mm	-	3000-6500K
GL-005-FX24	24W	φ168*40mm	-	3000-6500K
GL-005-FX32	32W	φ222*40mm	-	3000-6500K



Item No.	Size(D*L/L*W*H)	Power	Hole(D1/L1*W1)	Beam Angle	Temperature Color
GL-004-MY06	119mm	6W	105mm	180°	6400K/4500K2700K
GL-004-MY12	167mm	12W	155mm	180°	6400K/4500K2700K
GL-004-MY18	221mm	18W	205mm	180°	6400K/4500K2700K
GL-004-MY24	295mm	24W	285mm	180°	6400K/4500K2700K
GL-004-MF06	117mm	6W	105mm	180°	6400K/4500K2700K
GL-004-MF12	167mm	12W	155mm	180°	6400K/4500K2700K
GL-004-MF18	219mm	18W	205mm	180°	6400K/4500K2700K
GL-004-MF24	292mm	24W	285mm	180°	6400K/4500K2700K

LED Panel Light

Double color ceiling panel light



GL-006-YL



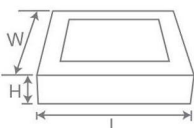
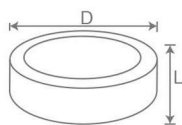
GL-006-FL

LED Panel Light

■ Features

- LED panel light adopts super bright LED as its luminous body;
- The anodized aluminum frame is stylish and fashionable with everlasting color;
- Excellent thermal management can effectively guarantee the LED's long-term stability;
- The front panel board is high translucent acrylic, which ensures the light even, soft and high transmittance;
- Using high quality electronic parts and components, the actual power factor can reach to 95%;
- External power supply, more stable, good heat dissipation;
- Pure white, warm white, cool white, red, green, blue, yellow, and RGB available.

■ Application



Item No.	Power	Size(DxL/LxWxH)	Beam Angle	Temperature Color
GL-006-YL05	3W+2W	φ105x40mm	180°	6400K/4500K/2700K
GL-006-YL09	6W+3W	φ145x40mm	180°	6400K/4500K/2700K
GL-006-YL16	12W+4W	φ195x40mm	180°	6400K/4500K/2700K
GL-006-YL24	18W+6W	φ240x40mm	180°	6400K/4500K/2700K
GL-006-FL05	3W+2W	105x105x40mm	180°	6400K/4500K/2700K
GL-006-FL09	6W+3W	145x145x40mm	180°	6400K/4500K/2700K
GL-006-FL16	12W+4W	195x195x40mm	180°	6400K/4500K/2700K
GL-006-FL24	18W+6W	240x240x40mm	180°	6400K/4500K/2700K

LED Panel Light

Glass panel light



GL-002-YB



GL-002-FB

Features

- Concise and beautiful appearance, electrostatic coating;
- Optical level diffusion plate and guide plate;
- Light body, easy mounting;
- Diecasting Alumium+imported PMMA, over 97% light transmistion for the led panel light;
- Pendant, ceiling and recessed mounting methods for options;
- Oxidation resistant, elegant and durable.

Product Details



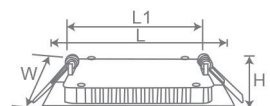
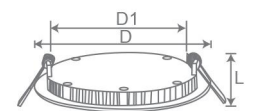
Application



Amusement park/Theater lighting/
Shopping mall/Restaurant hotel/
Meeting room etc



Item No.	Power	Size(DxL/LxWxH)	Hole(D1/L1xW1)	Temperature Color
GL-002-YB06	6W	φ100x30mm	φ85mm	6400K/4500K/2700K
GL-002-YB12	12W	φ160x30mm	φ140mm	6400K/4500K/2700K
GL-002-YB15	15W	φ200x30mm	φ180mm	6400K/4500K/2700K
GL-002-YB18	18W	φ200x30mm	φ180mm	6400K/4500K/2700K
GL-002-FB06	6W	100x100x30mm	85x85mm	6400K/4500K/2700K
GL-002-FB12	12W	160x160x30mm	140x140mm	6400K/4500K/2700K
GL-002-FB15	15W	200x200x30mm	180x180mm	6400K/4500K/2700K
GL-002-FB18	18W	200x200x30mm	180x180mm	6400K/4500K/2700K



LED Panel Light

Double color glass panel light

LED Panel Light



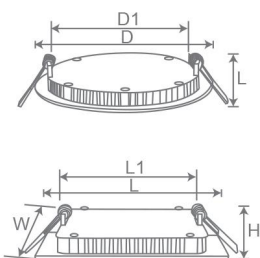
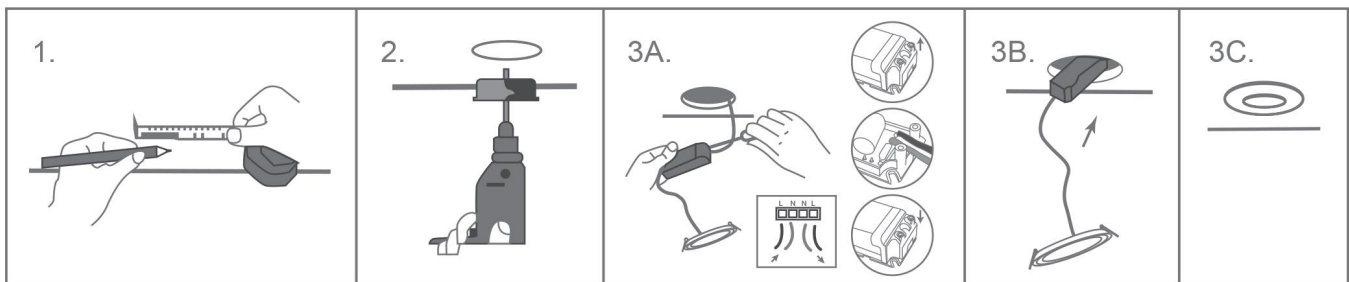
GL-003-FS



GL-003-YS

■ Features

- Energy saving, environmental friendly;
- Directly instead of traditional device of ceiling light;
- Easy to install. Directly contact to AC110V or AC220V, no need power supply;
- No UV or infra-red radiation, no mercury or lead, eco-friendly, no danger of broken led panel light panel glass;
- Be equipped with short circuit, open circuit, lighting stroke, power surge, overcurrent, over-voltage, overheat etc. protection circuit.



Item No.	Power	Size(DxL/LxWxH)	Hole(D1/L1xW1)	Temperature Color
GL-003-YS10	8W+2W	φ130x13mm	φ75mm	2 Color
GL-003-YS15	12W+3W	φ160x13mm	φ120mm	2 Color
GL-003-YS20	16W+4W	φ180x13mm	φ160mm	2 Color
GL-003-FS10	8W+2W	130x130x13mm	75x75mm	2 Color
GL-003-FS15	12W+3W	160x160x13mm	120x120mm	2 Color
GL-003-FS20	16W+4W	180x180x13mm	160x160mm	2 Color



LED Panel Light

Square panel light

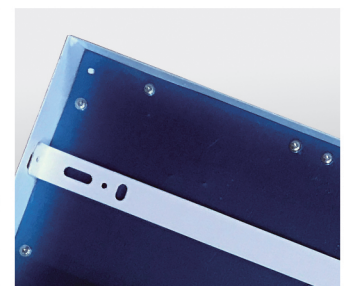
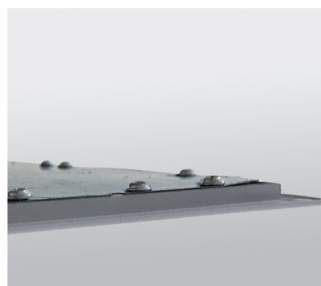


GL-007-MB

GL-008-MB

■ Features

- High brightness SMD LED chip;
- High light conducting efficiency and more even and soft light distribution;
- Wide voltage, wide frequency range constant current circuit;
- Junction temperature of LED is controlled in ideal range ($T_J < 60^\circ\text{C}$, ambient temperature $T_a = 25^\circ\text{C}$);
- Brightness decay less than 5% after 3 years' regular usage.



Applications

- 1-Conference / meeting room;
- 2-Factory & office;
- 3-Commercial purpose;
- 4-Residential & institution building;
- 5-School, college & university;
- 6-Supermarket, warehouse, hospital.

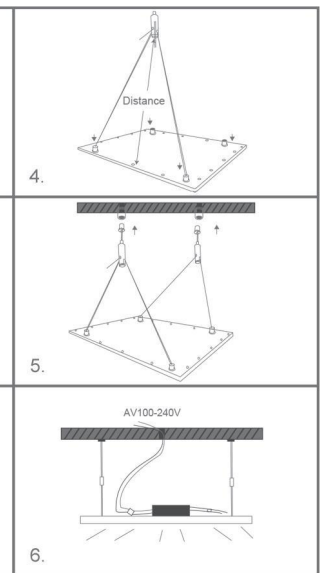
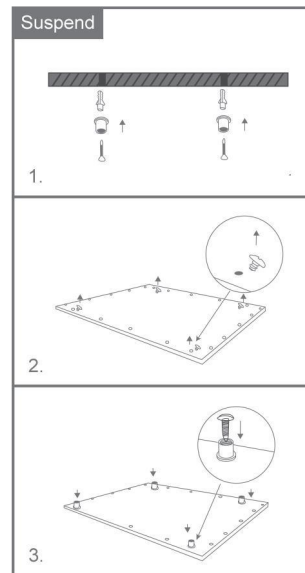
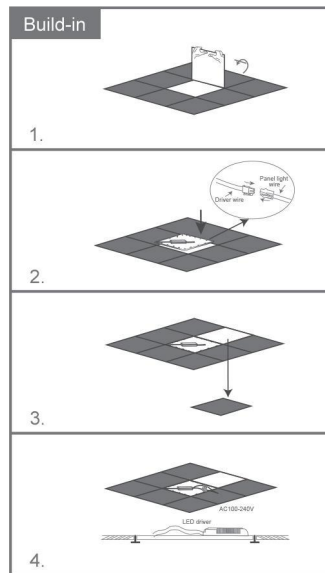
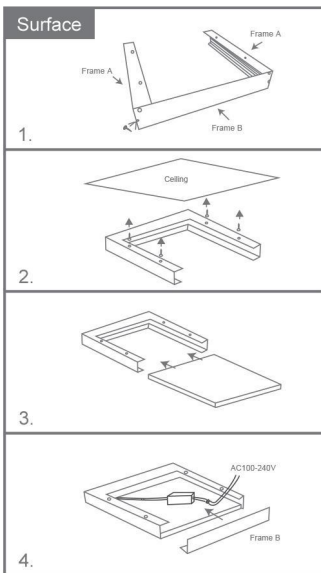




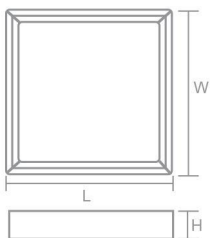
GL-008-MB

GL-007-MB

Installation of panle light:



Item No.	Power	LED Type	Size(D*L/L*W*H)	Temperature Color
GL-007MB	18W	SMD3014*180PCS	φ100mm	3000-6500K
GL-007MB	36W	SMD3014*180PCS	φ120mm	3000-6500K
GL-007MB	36W	SMD3014*180PCS	φ170mm	3000-6500K
GL-007MB	48W	SMD3014*180PCS	φ220mm	3000-6500K
GL-007MB	72W	SMD3014*180PCS	φ118*40mm	3000-6500K
GL-008-MB	18W	SMD3014*180PCS	φ168*40mm	3000-6500K
GL-008-MB	36W	SMD3014*180PCS	φ222*40mm	3000-6500K
GL-008-MB	36W	SMD3014*180PCS	φ222*40mm	3000-6500K
GL-008-MB	48W	SMD3014*180PCS	φ222*40mm	3000-6500K
GL-008-MB	72W	SMD3014*180PCS	φ222*40mm	3000-6500K



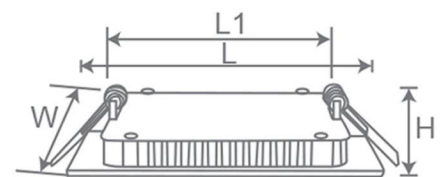


Panel Light

■ Features

- Energy saving, environmental friendly;
- Directly instead of traditional device of ceiling light;
- Easy to install. Directly contact to AC110V or AC220V, no need power supply;
- No UV or infra-red radiation, no mercury or lead, eco-friendly, no danger of broken led panel light panel glass;
- Be equipped with short circuit, open circuit, lighting stroke, power surge, overcurrent, over-voltage, overheat etc. protection circuit.

Item No.	Power	Size(D*L/L*W*H)	Temperature Color
GL007-MBA	24/36	295*595*35	2700-7000K
GL007-MBA	36/48/64/72/96	595*595*35	2700-7000K
GL007-MBA	36/48/72	295*1195*35	2700-7000K
GL007-MBA	72/100	595*1195*35	2700-7000K
GL008-MBA	24/36	300*600*38	2700-7000K
GL008-MBA	36/48/64/72/96	600*600*38	2700-7000K
GL008-MBA	36/48/72	300*1200*38	2700-7000K
GL008-MBA	72/100	600*1200*38	2700-7000K



LED bluetooth bulb light



■ Features

APP application control
Alexa Google Home Siri



Item No.	Power	Voltage	Base	Beam Angle
GR-RB1	7W	AC85-265V	E27	220°
GR-RB1	9W	AC85-265V	E27	220°
GR-RB1	12W	AC85-265V	E27	220°

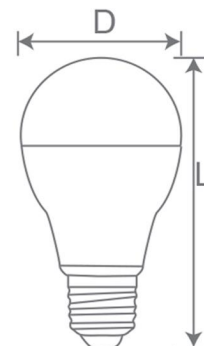
Product Details



Application



Villas/House/High-end stores/Office/
Specialty store/High-end leisure/
Entertainment club etc.





LED Bulb

G45



G45

■ Features

- Pretty appearance as quality;
- High brightness with good heat sink For LED bulb;
- This LED bulb Light is Easy to install and use;
- Energy Efficient: Reduces operating cost up to 75-80%;
- Environmentally friendly: no mercury, no lead, no phosphorous powders;
- Low maintenance: no ballast needed, no radio frequency interference;
- Durable: withstands frequent switching & is cold temperature compatible;
- No noise, no flicker: Instant start for healthy lighting.



Applications

- 1-Home and office lighting;
- 2-Commercial and industrial lighting;
- 3-School and college lighting;
- 4-Showcase lighting, bar lighting, display case accent, artworking lighting, mood lighting, and amusement park accent;
- 5-Warehouse lighting, hotel and restaurant lighting;
- 6-For bedside lamp use and dresser lighting.



LED Bulb

Voice control & sensor bulb

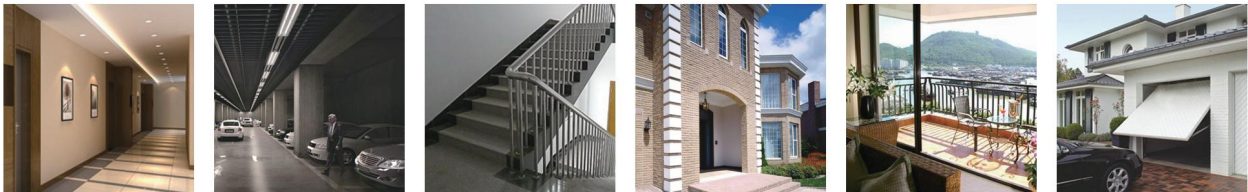


GL-022-SK

■ Features

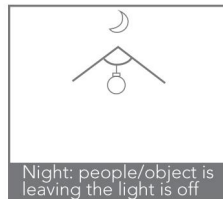
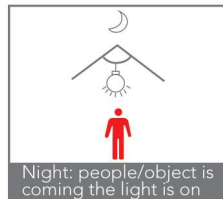
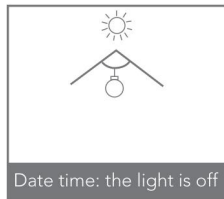
- Adopting photosensitive technology, in case of light the lamp will not light, completely achieve the goal of energy saving;
- Using acoustic sensor technology, in case of dark, as long as there are footsteps, open the sound, such as closing will light up automatically, automatic delay can be put out;
- Switch to reach 1 million times, life of 30000 hours.

■ Application

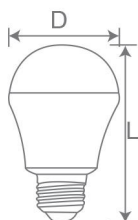


■ Features

- This product energy saving ,durable, high brightness,easy installation;
- Does not light during the day, night to lights, people go lamp, intelligence;
- Have the function of human body induction, actual daily light length added up to less than half an hour, built-in human body sensor and optial devices;
- Applicable to the channel, the bathroom, garage, basement, hotels, villas, residential corridor, public field as well as the field of light to save electricity.



GL-023-GY



Item No.	Power	Voltage	Material	Base	Size(DxL)
GL-022-SK	3W	AC100-240V	Plastic+Aluminium	E27	φ48x81mm
GL-022-SK	5W	AC100-240V	Plastic+Aluminium	E27	φ56x96mm
GL-022-SK	7W	AC100-240V	Plastic+Aluminium	E27	φ68x107mm
GL-023-GY	3W	AC100-240V	Plastic+Aluminium	E27	φ60x110mm
GL-023-GY	5W	AC100-240V	Plastic+Aluminium	E27	φ60x110mm
GL-023-GY	7W	AC100-240V	Plastic+Aluminium	E27	φ60x110mm

LED Bulb

A50/A55/A60/A70/A75/A80



Plastic

Plastic+Aluminium

Aluminium

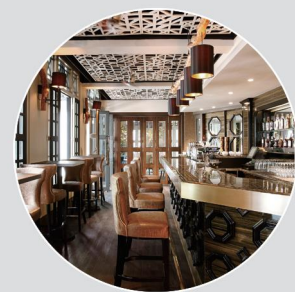
Features

- LED Bulb low heat, low thermal resistance, steady lighting, high brightness and CRI;
- Body with excellent thermal managing design;
- Ultra energy efficient, easy installation;
- No mercury, less CO₂ emission, eco-friendly to the environment;
- Anti-shock, anti-moisture, no RF interference;
- Longevity of service and minimal maintenance;
- Energy-saving, environment friendly, and save 80% of energy compared with incandescent bulb.

Product Details



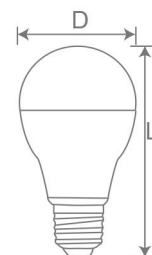
Application



Villas/House/High-end stores/Office/
Specialty store/High-end leisure/
Entertainment club etc.



Item No.	Power	Voltage	Beam Angle	Base	Size(DxL)
GL-029-A50	5W	AC100-265V	240°	E27	φ50x89mm
GL-029-A55	6W	AC100-265V	240°	E27	φ55x101mm
GL-029-A60	5/6/7/8/9/10W	AC100-265V	240°	E27/B22	φ60x111mm
GL-029-A60	15/18W	AC100-265V	220°	E27/B22	φ60x125mm
GL-029-A70	15W	AC100-265V	240°	E27/B22	φ70x130mm
GL-029-A70	20W	AC100-265V	240°	E27/B22	φ70x149mm
GL-029-A75	16/18W	AC85-265V	240°	E27/B22	φ75x140mm
GL-029-A80	18W	AC85-265V	240°	E27/B22	φ80x147mm
GL-029-A80	24W	AC85-265V	240°	E27/B22	φ80x165mm



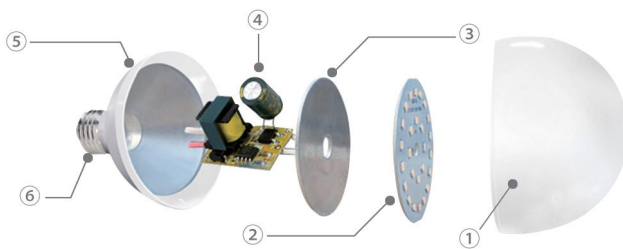
LED Bulb

G80/G90/G120

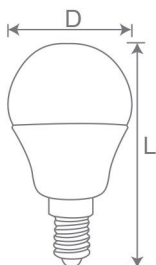


LED Bulb

Application



- ① High quality pc cover
- ② More lighting redering chip
- ③ Anti-heat conduction plate
- ④ Insolated driver power supply
- ⑤ High strength thermal plastic aluminum lamp body
- ⑥ Super base socket(E14/E27)



Item No.	Power	Voltage	Material	Base	Size(DxL)
GL-032-G45	3/4/5/6W	AC100-240V	Plastic+Aluminium	E14/E27/B22	φ45x81mm
GL-032-G45	7W	AC100-240V	Plastic+Aluminium	E14/E27/B22	φ45x85mm
GL-032-G80	10W	AC100-240V	Plastic+Aluminium	E27/B22	φ80x118mm
GL-032-G95	12W	AC100-240V	Plastic+Aluminium	E27/B22	φ95x138mm
GL-032-G120A	15/18W	AC100-240V	Plastic+Aluminium	E27/B22	φ120x160mm
GL-032-G120B	20W	AC100-240V	Aluminium	E27/B22	φ120x160mm

LED Bulb

C35/C37/C35T



GL-034-C35



GL-034-C37

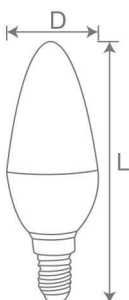


GL-034-C35T



Ceramic

Application



Item No.	Power	Voltage	Beam Angle	Base	Size(DxL)
GL-034-C35	2W	AC100-265V	240°	E14/E27	φ35x93mm
GL-034-C35	5W	AC100-265V	240°	E14/E27	φ35x103mm
GL-034-C37	3/4/5/6W	AC100-265V	240°	E14/E27	φ37x99mm
GL-034-C37	4/5/6W	AC100-265V	270°	E14/E27	φ37x106mm
GL-034-C37	6W	AC100-265V	240°	E14/E27	φ37x110mm
GL-034-C37	7W	AC100-265V	240°	E14/E27	φ37x114mm
GL-034-C35T	3/4/5/6W	AC100-265V	240°	E14/E27	φ35x125mm
GL-034-C35T	6W	AC100-265V	240°	E14/E27	φ35x127mm
GL-034-C35T	7W	AC100-265V	240°	E14/E27	φ35x132mm

LED Reflector Bulb

AR111/MR16/GU10

LED Reflector Bulb



GL-013-AR111A



GL-016-MR16A



GL-016-MR16B



GL-016-MR16C



GL-016-MR16D

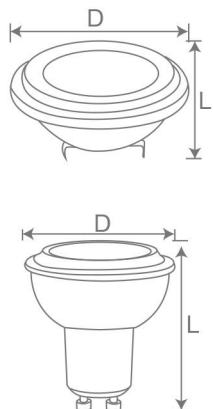


GL-016-GU10E



GL-016-GU10F

Application



Item No.	Power	LED Type	Beam angle	Base	Temperature Color
GL-013-AR111A	15W	COB	36°	G53/GU10	6400/4500/2700K
GL-016-MR16A	4/5/6W	SMD/COB	120°/38°	GU5.3/MR16	6400/4500/2700K
GL-016-MR16B	5/6/7W	COB	38°/60°	MR16	6400/4500/2700K
GL-016-MR16C	7W	SMD2835x7PCS	38°	MR16	6400/4500/2700K
GL-016-MR16C	8W	SMD2835x8PCS	38°	MR16	6400/4500/2700K
GL-016-MR16D	3/4W	SMD2835x6PCS	120°	MR16	6400/4500/2700K
GL-016-MR16D	5/7W	SMD2835x10PCS	120°	MR16	6400/4500/2700K
GL-016-GU10E	7W	SMD2835x7PCS	38°	GU10	6400/4500/2700K
GL-016-GU10E	8W	SMD2835x8PCS	38°	GU10	6400/4500/2700K
GL-016-GU10F	3/4W	SMD2835x6PCS	120°	GU10	6400/4500/2700K
GL-016-GU10F	5/7W	SMD2835x10PCS	120°	GU10	6400/4500/2700K

LED Reflector Bulb

PAR20/PAR30/PAR38



GL-015-PAR20A



GL-015-PAR30A



GL-015-PAR38A



GL-015-PAR20B

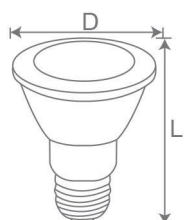
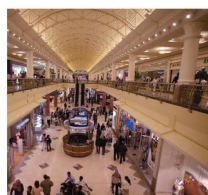


GL-015-PAR30B



GL-015-PAR38B

Application



Item No.	Power	LED Type	Beam angle	Base	Size(DxL)
GL-015-PAR20A	8W	SMD/COB	36°	E27/B22	φ68x90mm
GL-015-PAR20B	10W	COB	38°	E27	φ63x83mm
GL-015-PAR30A	12/15W	SMD/COB	36°	E27/B22	φ100x96mm
GL-015-PAR30B	15W	COB	38°	E27	φ95x95mm
GL-015-PAR38A	18/20W	SMD/COB	36°	E27/B22	φ126x132mm
GL-015-PAR38B	20W	COB	38°	E27	φ120x130mm

LED Reflector Bulb

R39/R50/R63/R80/R90



GL-014-R50

GL-014-R63

GL-014-R80

■ Features

- Pretty appearance;
- LED bulb with super high lumen;
- High brightness with good heat sink For LED bulb;
- This LED bulb light is easy to install and use;
- Super waterproof ability;
- Lsolated driver, non-isolated driver available;
- Low power consumption, lower heating during operation;
- No mercury, enviromental protection.

Product Details



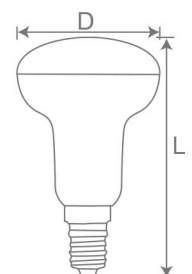
Application



Hotel/Hall/Chamber/Showcase/
Restaurant/Office/Reading room/
Atmosphere lighting etc.



Item No.	Power	LED Type	Beam angle	Base	Size(DxL)
GL-014-R39	3/4W	SMD	180°	E14	φ39x68mm
GL-014-R50	5/6W	SMD	180°	E14	φ50x87mm
GL-014-R63	8/10W	SMD	180°	E27	φ63x100mm
GL-014-R80	12/15W	SMD	180°	E27	φ80x115mm
GL-014-R90	18W	SMD	180°	E27	φ90x125mm



LED Bulb

Bird cage bulb & High Power



GL-025-NL



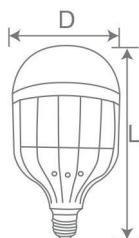
GL-025-HP

■ Features

- Fast light brighting, no delay and flicker;
- Energy-saving: saving 80% than the ordinary lamp;
- Green and health protection, no pollution, more comfortable for our vision;
- Environment-friendly and no UV or IR radiation;
- Wide range of available operating voltage and low consumption;
- Easy to install and maintain, replacement of traditional bulbs and no subsidiary fixture.



Item No.	Power	Voltage	Material	Base	Size(DxL)
GL-025-NL	15W	AC85-265V	Plastic	E27/B22	φ94x160mm
GL-025-NL	18W	AC85-265V	Plastic	E27/B22	φ94x160mm
GL-025-NL	24W	AC85-265V	Plastic	E27/B22	φ115x212mm
GL-025-NL	36W	AC85-265V	Plastic	E27/B22	φ115x212mm
GL-025-NL	50W	AC85-265V	Plastic	E27/B22	φ148x225mm
GL-025-NL	60W	AC85-265V	Plastic	E27/B22	φ141x226.5mm
GL-025-NL	80W	AC85-265V	Plastic	E27/B22	φ141x226.5mm
GL-025-HP	50W	AC85-265V	Aluminium+PC	E27	φ120x240mm
GL-025-HP	80W	AC85-265V	Aluminium+PC	E27	φ150x260mm
GL-025-HP	100W	AC85-265V	Aluminium+PC	E27	φ150x288mm



LED Bulb

T30/T37/T50/T60/T70/T80/T100/T120/T140/T150



GL-024-T30



GL-024-T70A



GL-024-T70B

Features

- 100% recyclable, no mercury or other hazardous materials;
- Low carbon emission, high luminous efficiency, Low heat generation;
- No radiation safe for body, No flickering & good for eyes;
- Good heat dissipation and unbreakable.

Product Details

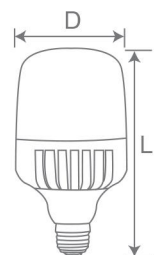



Application

Building decoration/Amusement park/
Theater lighting/Emergency
hallway lighting/Shopping mall/
Restaurant/Hotel/Meeting room/
School/Library/Warehouse etc.



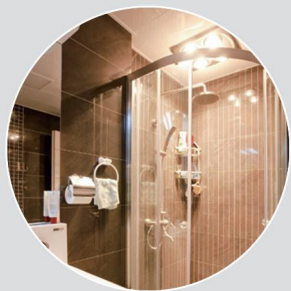
Item No.	Power	Voltage	Material	Base	Size(DxL)
GL-024-T30	6W	AC220-240V	Plastic+Aluminium	E27/E14	φ30x101mm
GL-024-T37	9W	AC220-240V	Plastic+Aluminium	E27/E14/G24	φ37x120mm
GL-024-T50	15W	AC220-240V	Plastic+Aluminium	E27	φ50x145mm
GL-024-T50A	5W	AC220-240V	Plastic+Aluminium	E27/B22	φ50x99.5mm
GL-024-T60A	9W	AC220-240V	Plastic+Aluminium	E27/B22	φ60x119mm
GL-024-T70A	13W	AC220-240V	Plastic+Aluminium	E27/B22	φ70x130mm
GL-024-T80A	18W	AC220-240V	Plastic+Aluminium	E27/B22	φ80x146mm
GL-024-T100A	28W	AC220-240V	Plastic+Aluminium	E27/B22	φ100x187mm
GL-024-T120A	35W	AC220-240V	Plastic+Aluminium	E27/B22	φ120x205mm
GL-024-T140A	45W	AC220-240V	Plastic+Aluminium	E27/B22	φ140x260mm
GL-024-T80B	30W	AC100-265V	Aluminium	E27/B22	φ80x152mm
GL-024-T100B	40W	AC100-265V	Aluminium	E27/B22	φ100x182mm
GL-024-T120B	50W	AC100-265V	Aluminium	E27/B22	φ120x218mm
GL-024-T140B	60W	AC100-265V	Aluminium	E27/B22	φ140x240mm
GL-024-T150B	80W	AC100-265V	Aluminium	E27/B22	φ150x267mm



Product Details



Application



Bathroom/Hall/Shopping mall/
Hotel/Restaurant/Library etc .

LED Filament Bulb

R50R/R63R/R80R



GL-039-R50R

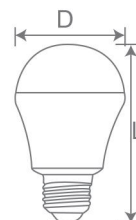
GL-039-R63R

■ Features

- 360 degree beam angle;
- Instant start hot LED filament bulb, no delay and flickers;
- IC Driver, constant current, safety guaranteed;
- Clear and durable glass;
- Different base for option.



Item No.	Power	LEDs	Voltage	Base	Size(DxL)
GL-039-R50R	2W	2	AC220-240V	E14	φ50x83mm
GL-039-R63R	4W	4	AC220-240V	E27/B22	φ63x100mm
GL-039-R80R	4W	4	AC220-240V	E27/B22	φ80x115mm



LED Energy Saving Bulb

High Power energy saving lamp



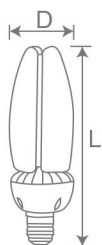
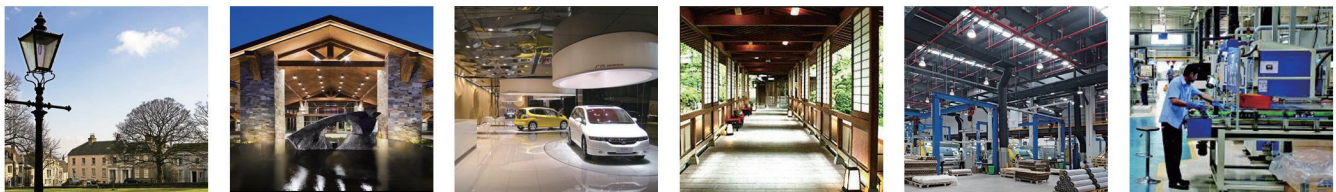
GL-030-FT

■ Features

- New design;
- SMD 5630 chip;
- No fan heat dissipation solution;
- 360 degree beam angle;
- Flame retardant material;
- IP65 waterproof design;
- Transparent cover and diffuser cover both available.



■ Application



Item No.	Power	Voltage	Material	Base	Size(DxL)
GL-030-FT	30W	AC100-277V	Aluminium	E26/E27/E39/E40	φ83x257mm
GL-030-FT	40W	AC100-277V	Aluminium	E26/E27/E39/E40	φ83x257mm
GL-030-FT	50W	AC100-277V	Aluminium	E26/E27/E39/E40	φ83x257mm

LED Bulb

Circular ring & Factory lamp



GL-027-HG

■ Features

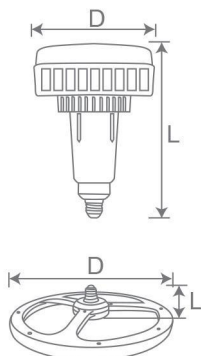
- Original and fashion design;
- Using intelligent IC control circuit, wide voltage design, overload and under voltage protection is more stable and more secure;
- No flicker and glare, can protect our eyes;
- Perfect optical properties;



Work shop, warehouse, mine, supermarket, exhibition hall, garage , gasoline station, design park and other lage space lighting.



GL-028-GC



Item No.	Power	Voltage	Beam Angle	Base	Size(DxL)
GL-027-HG	6W	AC85-265V	360°	E27	φ160x90mm
GL-027-HG	12W	AC85-265V	360°	E27	φ260x90mm
GL-027-HG	18W	AC85-265V	360°	E27	φ360x90mm
GL-028-GC	40W	AC180-265V	180°	E27/E40	φ130x194mm
GL-028-GC	60W	AC180-265V	180°	E27/E40	φ160x226mm
GL-028-GC	80W	AC180-265V	180°	E40	φ190x268mm
GL-028-GC	100W	AC180-265V	180°	E40	φ190x268mm

LED Bulb

UFO bulb

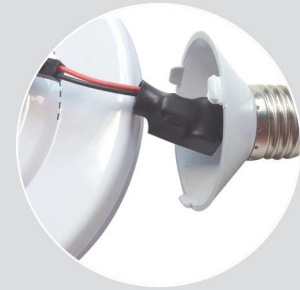
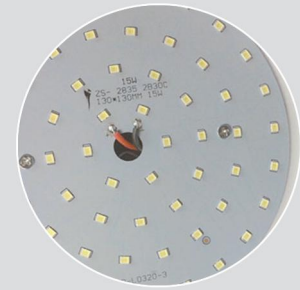


GL-026-UFO-A

■ Features

- Energy saving, compared to traditional energy saving lamp on the condition of same illumination, save up to 70%~80%;
- Green and eco-friendly without mercury, Low noise, no UV and IR in the beam, a safe cold-light source, safe for human;
- Light is soft and uniform, safe to eyes;
- Easy installation and conventional use, direct replacement of traditional bulb and low maintenance.

Product Details



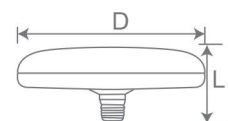
Application



Hotel/Department/Conference/
Meeting room/Factory/Office/
Commercial purpose/Residential/
School/College etc.



Item No.	Power	Voltage	Beam Angle	Base	Size(DxL)
GL-026-UFO-A	12W	AC100-265V	200°	E27/B22	φ120x79mm
GL-026-UFO-A	18W	AC100-265V	200°	E27/B22	φ150x79mm
GL-026-UFO-A	24W	AC100-265V	200°	E27/B22	φ200x79mm
GL-026-UFO-A	36W	AC100-265V	200°	E27/B22	φ250x79mm



LED Filament Bulb

C35/C35T/G45/A60/S14



C35A

C35T

G45

A60

S14

Features

- Easy installation;
- High shock & vibration resistance;
- Moisture resistant;
- No buzzing, no flickering, no mercury/ poisons;
- No radio frequency interference;
- Environmentally friendly;
- Beam angle is 360°;
- The glass cover can be: clear, frost, white.

Product Details



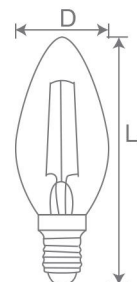
Application



Hotel lighting/Library lighting/
School lighting/Bank lighting/
Office lighting/Home/ etc.



Item No.	Power	LEDs	Voltage	Material	Base	Size(DxL)
GL-036-C35A	1/2/4W	1/2/4	AC220-240V	Glass	E14/E27	φ35x100mm
GL-036-C35TA	1/2/4W	1/2/4	AC220-240V	Glass	E14/E27	φ35x125mm
GL-036-C35TB	4W	4	AC220-240V	Glass+Plastic	E14	φ35x140mm
GL-036-G45	1/2/4W	1/2/4	AC220-240V	Glass	E14/E27	φ45x75mm
GL-036-A60	2/3.5W	2	AC220-240V	Glass	E27/B22	φ60x105mm
GL-036-A60	4/5W	4	AC220-240V	Glass	E27/B22	φ60x105mm
GL-036-A60	6/8W	6/8	AC220-240V	Glass	E27/B22	φ60x105mm
GL-036-S14	1/2W	1/2	AC220-240V	Glass	E26/E27	φ45x89mm



LED Filament Bulb

G80/G95/G125

LED Filament Bulb



G80
(30mm filament)

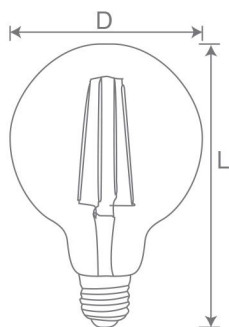


G80
(60mm filament)

Application



Item No.	Power	LEDs	Voltage	Material	Base	Size(DxL)
GL-037-G80	2W	2	AC220-240V	Glass	E27/B22	φ80x120mm
GL-037-G80	4/5W	4	AC220-240V	Glass	E27/B22	φ80x120mm
GL-037-G80	6W	6	AC220-240V	Glass	E27/B22	φ80x120mm
GL-037-G80	8W	8	AC220-240V	Glass	E27/B22	φ80x120mm
GL-037-G80	10W	12	AC220-240V	Glass	E27/B22	φ80x120mm
GL-037-G95	2W	2	AC220-240V	Glass	E27/B22	φ95x135mm
GL-037-G95	4/5W	4	AC220-240V	Glass	E27/B22	φ95x135mm
GL-037-G95	6W	6	AC220-240V	Glass	E27/B22	φ95x135mm
GL-037-G95	8W	8	AC220-240V	Glass	E27/B22	φ95x135mm
GL-037-G95	10W	12	AC220-240V	Glass	E27/B22	φ95x135mm
GL-037-G125	2W	2	AC220-240V	Glass	E27/B22	φ125x170mm
GL-037-G125	4/5W	4	AC220-240V	Glass	E27/B22	φ125x170mm
GL-037-G125	6W	6	AC220-240V	Glass	E27/B22	φ125x170mm
GL-037-G125	8W	8	AC220-240V	Glass	E27/B22	φ125x170mm
GL-037-G125	10W	12	AC220-240V	Glass	E27/B22	φ125x170mm





GL-037-START
140*60*190mm



GL-037-HEART
140*65*155mm



GL-037-ZS95
Φ95*H155mm



GL-037-JZ110
Φ110*H175mm



Product Details



Application



Hotel lighting/Library lighting/
School lighting/Bank lighting/
Office lighting/Home/ etc.

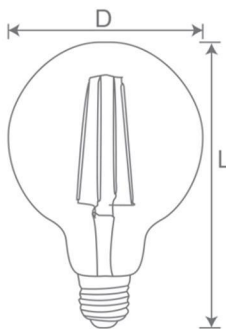


G200

ST160

■ Features

- Easy installation;
- High shock & vibration resistance;
- Moisture resistant;
- No buzzing, no Flickering, no mercury/ poisons;
- No radio frequency interference;
- Environmentally friendly;
- Beam angle is 360°;
- The glass cover can be: clear, frost, white.



Item No.	Power	Voltage	Material	Base	Size(D*L)
GL-037-G200	4W	220V	Glass	E27	Φ200*280mm
GL-037-G200	4W	220V	Glass	E27	Φ200*280mm
GL-037-G200	8W	220V	Glass	E27	Φ200*280mm
GL-037-G200	8W	220V	Glass	E27	Φ200*280mm
GL-037-ST160	4W	220V	Glass	E27	160*270mm
GL-037-ST160	4W	220V	Glass	E27	160*270mm
GL-037-ST160	4W	220V	Glass	E27	160*270mm
GL-037-ST160	4W	220V	Glass	E27	160*270mm



A60-3D



ST64-3D



G80-3D



G95-3D



Heart-3D



JZ125-3D



SDS-3D



STAR-3D

■ Features

- Easy installation;
- High shock & vibration resistance;
- Moisture resistant;
- No buzzing, no Flickering, no mercury/ poisons;
- No radio frequency interference;
- Environmentally friendly;
- Beam angle is 360°;
- The glass cover can be: clear, frost, white.

Item No.	Power	Voltage	Material	Size(D*L)
GL-037-A60-3D	4W	220V	Glass	Φ60*105mm

Item No.	Power	Voltage	Material	Size(D*L)
GL-037-ST64-3D	4W	220V	Glass	Φ64*145mm

Item No.	Power	Voltage	Material	Size(D*L)
GL-037-G80-3D	4W	220V	Glass	Φ80*117mm

Item No.	Power	Voltage	Material	Size(D*L)
GL-037-G95-3D	4W	220V	Glass	Φ95*136mm

Item No.	Power	Voltage	Material	Size(D*L)
GL-037-JZ125-3D	4W	220V	Glass	Φ110*175mm

Item No.	Power	Voltage	Material	Size(D*L)
GL-037-SDS-3D	4W	220V	Glass	Φ90*240mm

Item No.	Power	Voltage	Material	Size(D*L)
GL-037-Heart-3D	4W	220V	Glass	Φ95*145mm

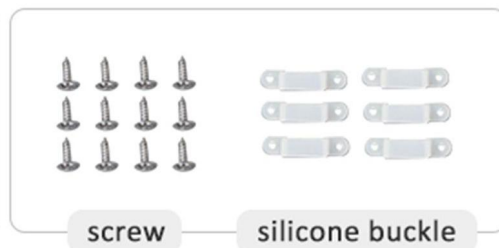
Item No.	Power	Voltage	Material	Size(D*L)
GL-037-Star-3D	4W	220V	Glass	Φ140*60*190mm



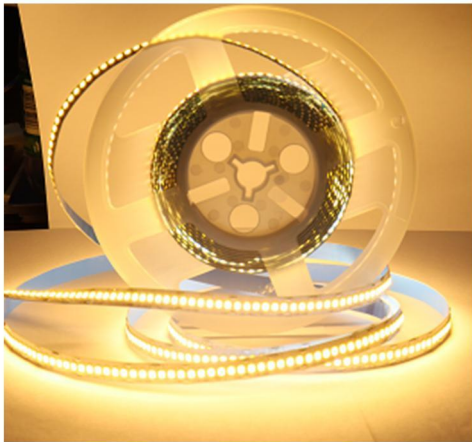
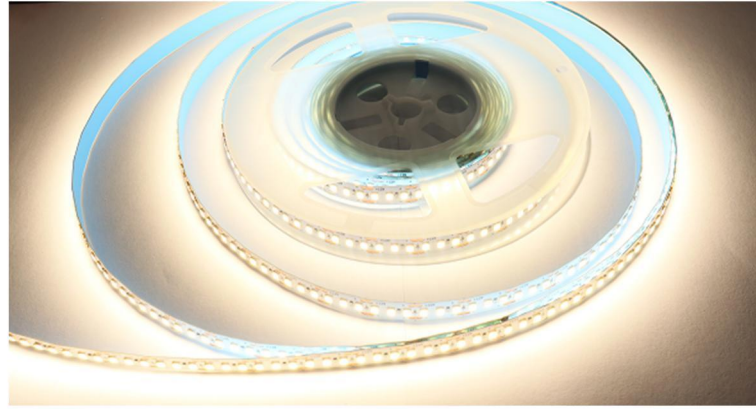


■ Features

light belt+controller+power supply



Item No.	Power	Voltage	Number of lamp beads
GL-040ML	4W/m	DC12V	30 lamps/m
GL-040ML	10W	DC12V	10m
GL-040ML	40W	DC12V	300 lamps

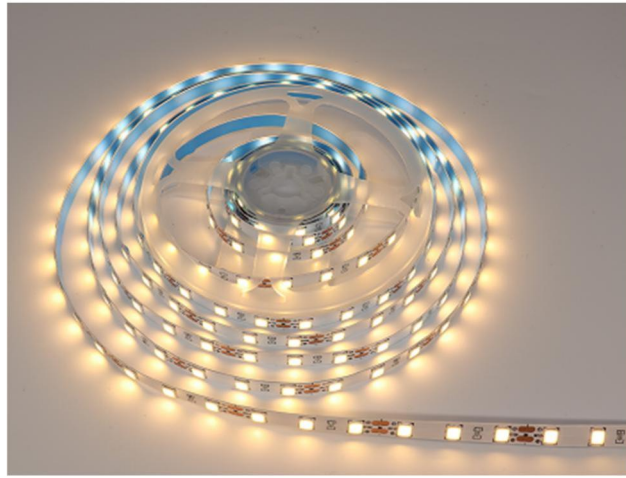


■ Features

- High voltage input, very soft FPC board, high brightness SMD 3528/5050;
- It is easy to install with 3M sticky back tape on the backside;
- High brightness, large viewing angle(120 degree), stable performance, light and flexible shape;
- 1 meter is a unit, within which there is one corresponding point(parallel point) for cutting arbitrarily;
- Low light decline and long lifespan;
- IP20/ IP64/ IP65/ IP68 waterproof, can be used for indoor and outdoor decoration and edge lighting.



Model No	Voltage	LED Type	IP	Color
GL-040A	12V/24V	120 Led/M	20/65	6500K/4000K/3000K
GL-040A				Red/Blue/Green/Pink/ Amber/iceblue/yellow
GL-040A	12V/24V	180 Led/M	20/65	6500K/4000K/3000K
GL-040A				Red/Blue/Green/Pink/ Amber/iceblue/yellow
Model No	Voltage	LED Type	IP	Color
GL-040A	12V/24V	240 Led/M	20/65	6500K/4000K/3000K
GL-040A				6500K/4000K/3000K
Model No	Voltage	LED Type	IP	Color
GL-040A	12V/24V	240 Led/M	20/65	6500K/4000K/3000K
GL-040A				6500K/4000K/3000K

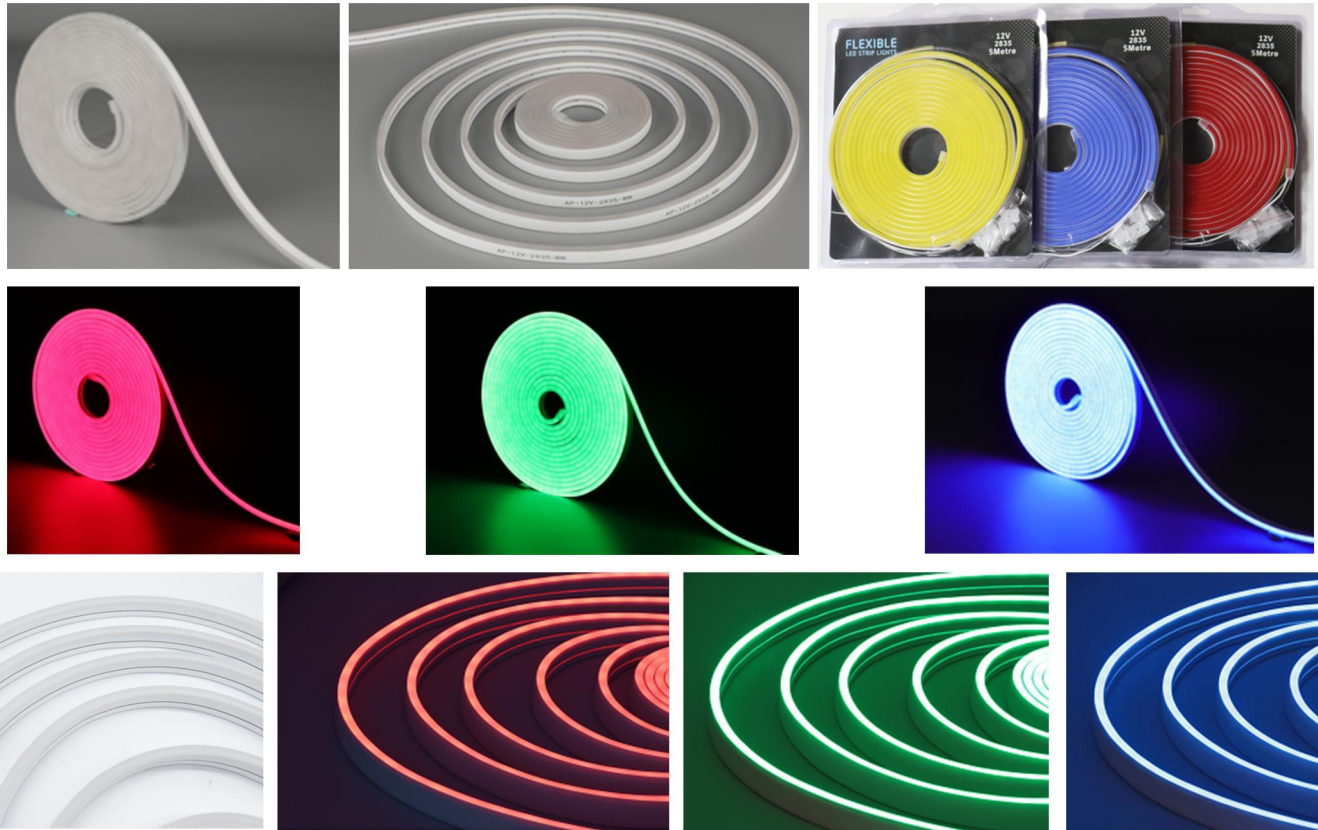


■ Features

- High voltage input, very soft FPC board, high brightness SMD 3528/5050;
- It is easy to install with 3M sticky back tape on the backside;
- High brightness, large viewing angle(120 degree), stable performance, light and flexible shape;
- 1 meter is a unit, within which there is one corresponding point(parallel point) for cutting arbitrarily;
- Low light decline and long lifespan;
- IP20/ IP64/ IP65/ IP68 waterproof, can be used for indoor and outdoor decoration and edge lighting.



Item No.	Voltage	LED Type	IP	Color
GL-040B	DC12V DC24V	4040 led/M	20/65	DC12V6500K/4000K/3000K/Blue Other colors +0.2 (Red/Green/Pink)
GL-040B	DC12V DC24V	5054 led/M	20/65	DC12V6500K/4000K/3000K/Blue Other colors +0.2 (Red/Green/Pink)
Item No.	Voltage	LED Type	IP	Color
GL-040B	DC12V DC24V	5050 led/M	20/65	DC12V6500K/4000K/3000K/Blue Other colors +0.2 (Red/Green/Pink)
Item No.	Voltage	LED Type	IP	Color
GL-040B	DC12V DC24V	5050 led/M	20/65	RGB



■ Features

- High voltage input, very soft FPC board, high brightness SMD 3528/5050;
- It is easy to install with 3M sticky back tape on the backside;
- High brightness, large viewing angle(120 degree), stable performance, light and flexible shape;
- 1 meter is a unit, within which there is one corresponding point(parallel point) for cutting arbitrarily;
- Low light decline and long lifespan;
- IP20/ IP64/ IP65/ IP68 waterproof, can be used for indoor and outdoor decoration and edge lighting.



Model No	Voltage	LED Type	IP	Color
GL-040C	DC12V	24-F30: G3326LM	20/65	6500K/4000K/3000K/Blue Other Color
GL-040C	DC12V	2835 led/M	20/65	6500K/4000K/3000K/Blue Other Color
Model No	Voltage	LED Type	IP	Color
GL-040E	AC110V/220V	2835 led/M	20/65	6500K/4000K/3000K/Blue Other Color
GL-040E	AC110V/220V	2835 led/M	20/65	6500K/4000K/3000K/Blue Other Color

LED Strip Light

SMD 3528/5050



IP20

Naked
Non-waterproof



IP64

Silicone Tube
Hollow



IP65

Epoxy resin or silicon
Only on surface



IP68

Silicon tube solid
Inside material option:
epoxy resin or PU



SMD3528

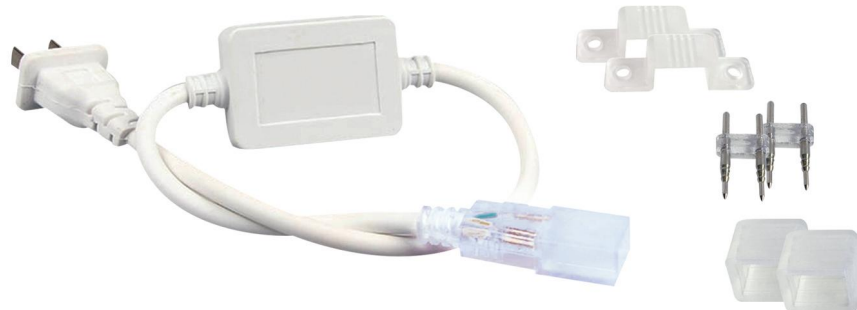


SMD5050

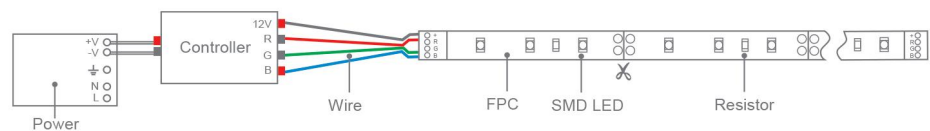
■ Features

- High voltage input, very soft FPC board, high brightness SMD 3528/5050;
- It is easy to install with 3M sticky back tape on the backside;
- High brightness, large viewing angle(120 degree), stable performance, light and flexible shape;
- 1 meter is a unit, within which there is one corresponding point(parallel point) for cutting arbitrarily;
- Low light decline and long lifespan;
- IP20/ IP64/ IP65/ IP68 waterproof, can be used for indoor and outdoor decoration and edge lighting.

Accessory:

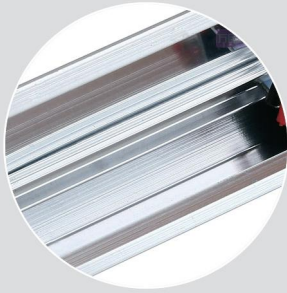


How to connect controller:



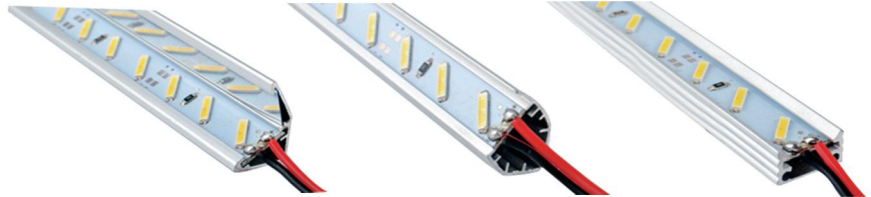
Item No.	Voltage	LED Type	LEDs	IP	Color
GL-040-3528D	12V	SMD3528	60	IP20/IP64/IP65/IP68	White/ Warm white/ Red/ Yellow/ Blue/ Green
GL-040-3528S	12V	SMD3528	120	IP20/IP64/IP65/IP68	White/ Warm white/ Red/ Yellow/ Blue/ Green
GL-040-5050D	12V	SMD5050	30	IP20/IP64/IP65/IP68	White/ Warm white/ Red/ Yellow/ Blue/ Green
GL-040-5050S	12V	SMD5050	60	IP20/IP64/IP65/IP68	White/ Warm white/ Red/ Yellow/ Blue/ Green/ RGB
GL-040-5050GS	220V	SMD5050	60	IP20/IP64/IP65/IP68	White/ Warm white/ Red/ Yellow/ Blue/ Green

Product Details



LED Strip Light

SMD 8520



V Type Reflector

V Type Groove

U Type Groove

Application

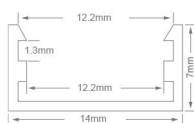


Building outline wall decoration/
Advertising /City lighting/
Passageway sign lighting/House/
Park/Theater/Bar/Cabin/
Holiday decoration/
Background light

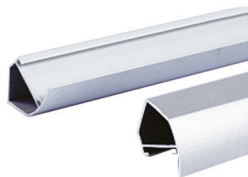
Features

- With perfect optical design, big view angle, high brightness;
- Uniform and soft luminosity distribution, no glare design;
- Using aluminum bar booth, fixed both ends' screws or neutral glass glue to paste up, hidden installation will be good;
- High-light effect, more energy-saving;
- DC 24V input, can be directly contact with the human body, safe operation, convenient maintenance;
- The outer shell is made of high quality aluminum alloy, the lamp board is made of aluminum board, and the multi-layer space is designed to ensure good heat dissipation effect and longer lifespan;
- Easy installation: Self-adhesive back with double side adhesive tape, so it can be fixed on any surface and in any shape easily.

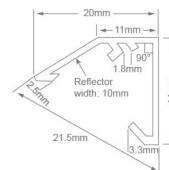
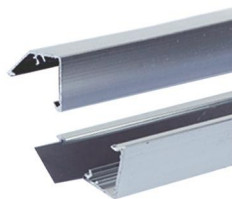
U/V Type Aluminium Groove



Flat U Type Groove



V Type Groove



V Type Reflector



V Type Groove with PC Cover

U/V Type Interface



270° V type corner



135° V type corner



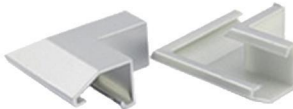
90° V type corner



180° V type through



90° reflector corner



270° reflector corner



135° reflector corner

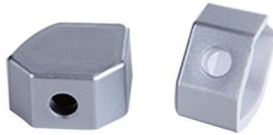


180° reflector through

U/V Type Plug



Clear plug for U type groove

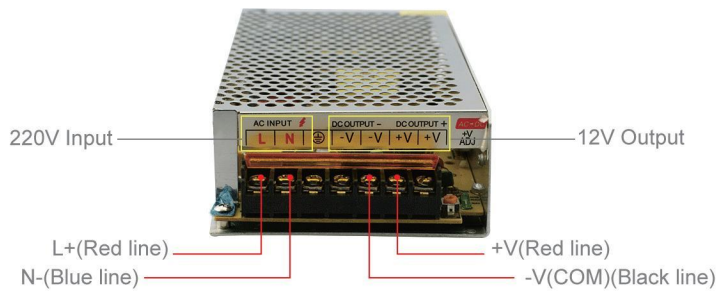


Plug for V type groove



Plug for U type groove

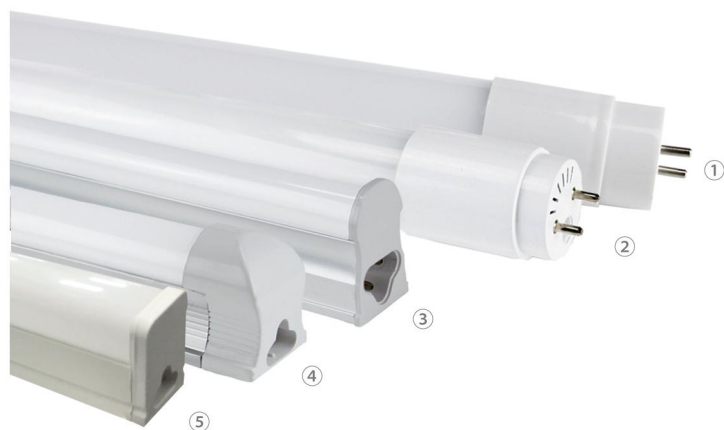
Switching Power Supply Driver



Item No.	Voltage	LED Type	LEDs	IP	Color Temperature
GL-041-8520D	DC12V	SMD8520	36	IP20/IP68	Warm white, Cool white, Pure white
GL-041-8520S	DC12V	SMD8520	72	IP20/IP68	Warm white, Cool white, Pure white

LED Fluorescent Tube

T5/T8



- ①GL-010-T8-P ②GL-010-T8-G ③GL-010-T5-F
- ④GL-010-T8-F ⑤GL-010-FG-T8

■ Features

- Directly installing, no modification, no need rewire;
- Running without ballast and starter, instant start, no flickering, no humming;
- Thickened 0.9mm aluminum radiator for heat dissipation;
- Energy saving up to 80% high intensity;
- Inner power efficiency more than 87%;
- Heat protection system, can work under unstable voltage.

Product Details



Application



Commercial lighting/Office/Hospital/
Supermarket/School/Home etc.



Item No.	Power	LED Type	Material	Base	Beam Angle	Size(DxL)
GL-010-T5-F	9W	SMD3014	Aluminum+Plastic	-	120°	φ16x600mm
GL-010-T5-F	18W	SMD3014	Aluminum+Plastic	-	120°	φ16x1200mm
GL-010-T8-F	9W	SMD2835	Aluminum+Plastic	-	180°	φ26x600mm
GL-010-T8-F	18W	SMD2835	Aluminum+Plastic	-	180°	φ26x1200mm
GL-010-T8-G	9W	SMD2835	Glass	G13	300°	φ26x600mm
GL-010-T8-G	18W	SMD2835	Glass	G13	300°	φ26x1200mm
GL-010-T8-G	22W	SMD2835	Glass	G13	300°	φ26x1200mm
GL-010-T8-P	22W	SMD2835	Plastic	G13	330°	φ26x600mm
GL-010-T8-P	9W	SMD2835	Plastic	G13	330°	φ26x1200mm
GL-010-T8-P	18W	SMD2835	Plastic	G13	330°	φ26x1500mm
GL-010-FG-T8	9W	SMD2835	Plastic	G13	330°	600mm
GL-010-FG-T8	18W	SMD2835	Plastic	G13	330°	1200mm

LED Fluorescent Tube

Waterproof



GL-011-SF



GL-011-GS



GL-011-SF-A

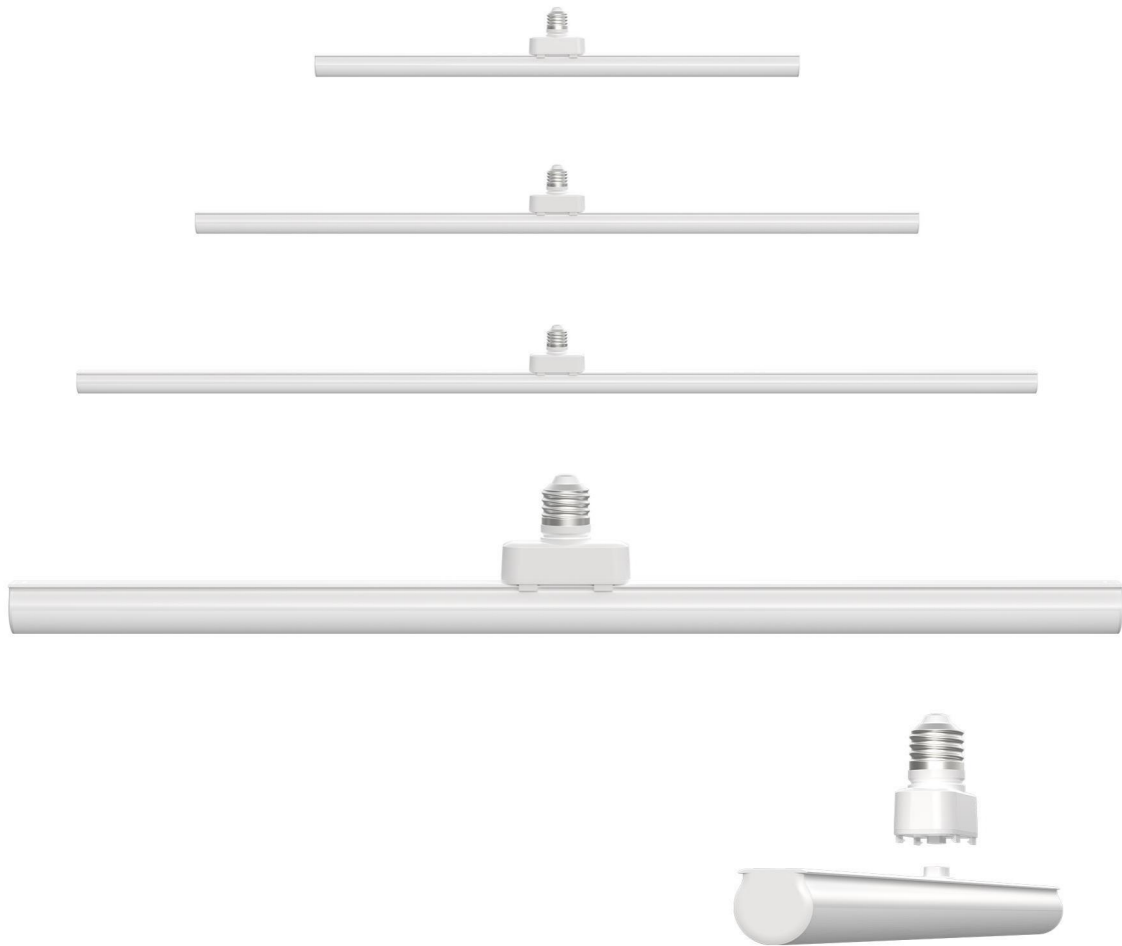
■ Features

- Waterproof, dustproof and blastproof;
- Suit both indoor and outdoor uses;
- Without opening the lampshade for direct wiring;
- All kinds of ways to install: lifting or back installation.

■ Application



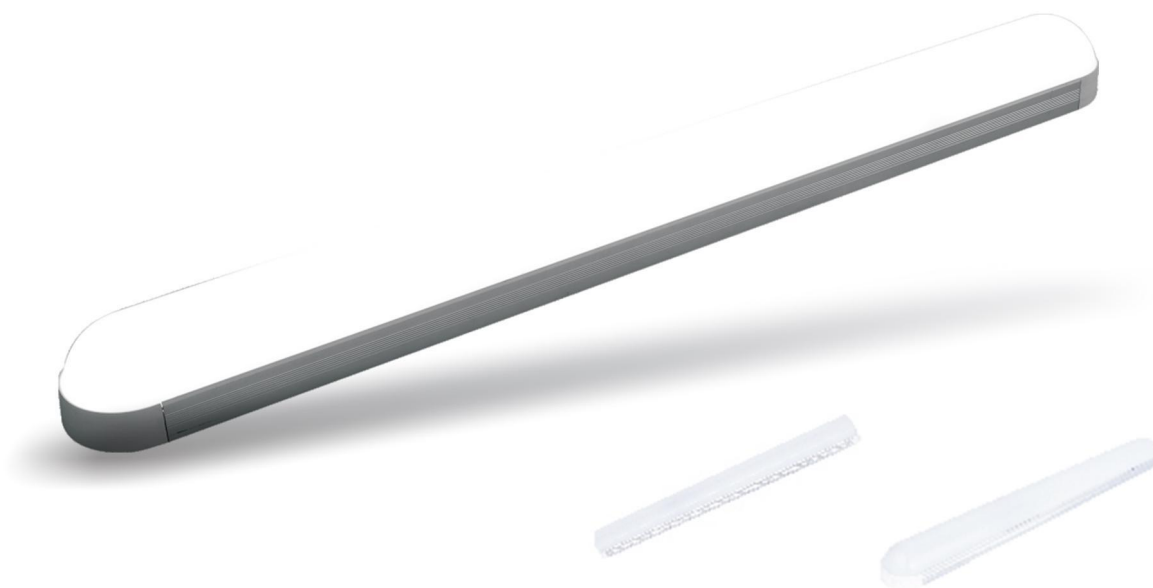
Item No.	Power	Voltage	Material	Lumen	Size(LxWxH)	Temperature Color
GL-011-SF-A	10W	85-265V	Aluminum+Plastic	800lm	300x75x25mm	6000K
GL-011-SF-A	18W	85-265V	Aluminum+Plastic	1440lm	600x75x25mm	6000K
GL-011-SF-A	26W	85-265V	Aluminum+Plastic	2080lm	900x75x25mm	6000K
GL-011-SF-A	36W	85-265V	Aluminum+Plastic	2880lm	1200x75x25mm	6000K
GL-011-SF	18W	85-265V	Plastic	1440-1530lm	656x80x90mm	6000K
GL-011-SF	36W	85-265V	Plastic	2880-3060lm	1260x80x90mm	6000K
GL-011-GS1	18W	85-265V	Plastic	1440lm	656x80x90mm	6000K
GL-011-GS1	36W	85-265V	Plastic	2880lm	1260x80x90mm	6000K
GL-011-GS1	58W	85-265V	Plastic	4640lm	1564x66x90mm	6000K
GL-011-GS2	18W	85-265V	Plastic	1440lm	656x115x90mm	6000K
GL-011-GS2	36W	85-265V	Plastic	2880lm	1260x115x90mm	6000K
GL-011-GS2	58W	85-265V	Plastic	4640lm	1564x106x90mm	6000K



■ Features

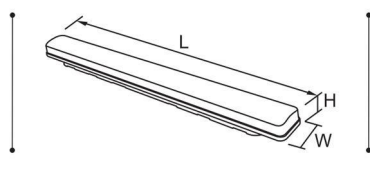
- Directly installing, no modification, no need rewire;
- Running without ballast and starter, instant start, no flickering, no humming;
- Thickened 0.9mm aluminum radiator for heat dissipation;
- Energy saving up to 80% high intensity;
- Inner power efficiency more than 87%;
- Heat protection system, can work under unstable voltage.

Item No.	Power	Size(D*L/L*W*H)	Lumen	Temperature Color
GL-011-CX	9W	86.8*600	900W	2700-6500K
GL-011-CX	12W	86.8*900	1200W	2700-6500K
GL-011-CX	18W	86.8*1200	1800W	2700-6500K



■ Features

- Flicker free
- Long life
- No UV or IR radiation
- No mercury
- Operating temperature-20°C~40°C
- Fire-proof PC class V0

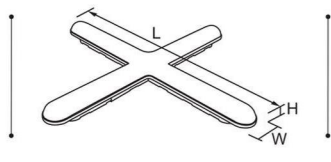


Item No.	Power	Material	Beam Angle	Size(D*L/L*W*H)
GR-SZ-1001	30W	Whole PC	120°	L600*W50*H60mm
GR-SZ-1001	30W	AL+PC	120°	L600*W50*H60mm
GR-SZ-1001	30W	AL+PC	120°	L600*W50*H60mm
GR-SZ-1001	30W	Whole PC	120°	L600*W50*H60mm



■ Features

- Flicker free
- Long life
- No UV or IR radiation
- No mercury
- Operating temperature -20°C~40°C
- Fire-proof PC class V0



Item No.	Power	Material	Beam Angle	Size(D*L/L*W*H)
GR-SZ-1005	30W	Whole PC	120°	L600*W50*H45mm
GR-SZ-1005	30W	AL+PC	120°	L600*W50*H45mm



■ Features

- Personal Mould
- >3000 hours
- No UV or IR radiation
- No mercury
- Operating temperature-20°C~40°C

Item No.	Power	Material	Size(D*L*W*H)
GR-SZ-1002	40W	AL+PC	1200mm
GR-SZ-1002	60W	AL+PC	1200mm



■ Features

- Personal Mould
- >3000 hours
- No UV or IR radiation
- No mercury
- Operating temperature-20°C~40°C

Item No.	Power	Material	Size(D*L*W*H)
GR-SZ-1003	40W	AL+PC	1200mm
GR-SZ-1003	60W	AL+PC	1200mm
GR-SZ-1003	22W	AL+PC	600mm

Application:





■ Features

- Personal Mould
- >3000 hours
- No UV or IR radiation
- No mercury
- Operating temperature-20°C~40°C

Item No.	Power	Material	Size(D*L/L*W*H)
GR-SZ-1006A	36W	AL+PC	1200mm
GR-SZ-1006A	40W	AL+PC	1200mm
GR-SZ-1006A	28W	AL+PC	900mm
GR-SZ-1006A	18W	AL+PC	600mm
GR-SZ-1006A	9W	AL+PC	300mm
GR-SZ-1006A	24W	AL+PC	1200mm
GR-SZ-1006A	14W	AL+PC	900mm
GR-SZ-1006A	11W	AL+PC	600mm
GR-SZ-1006A	6W	AL+PC	300mm



■ Features

- Personal Mould
- >3000 hours
- No UV or IR radiation
- No mercury
- Operating temperature-20°C~40°C

Item No.	Power	Material	Size(D*L/L*W*H)
GR-SZ-1007A	36W	AL+PC	1200mm
GR-SZ-1007A	40W	AL+PC	1200mm
GR-SZ-1007A	28W	AL+PC	900mm
GR-SZ-1007A	18W	AL+PC	600mm
GR-SZ-1007A	9W	AL+PC	300mm
GR-SZ-1007B	24W	AL+PC	1200mm
GR-SZ-1007B	14W	AL+PC	1200mm
GR-SZ-1007B	11W	AL+PC	900mm
GR-SZ-1007B	6W	AL+PC	600mm



■ Features

Personal Mould

>3000 hours

No UV or IR radiation

No mercury

Operating temperature-20°C~40°C

Application:



Item No.	Power	Material	Size(D*L/L*W*H)
GR-SZ-1008	36W	AL+PC	1200mm
GR-SZ-1008	40W	AL+PC	900mm
GR-SZ-1008	28W	AL+PC	600mm
GR-SZ-1008	18W	AL+PC	300mm



■ Features

- Personal Mould
- >3000 hours
- No UV or IR radiation
- No mercury
- Operating temperature-20℃~40℃

Application:



Item No.	Power	Material	Size(D*L/L*W*H)
GR-SZ-1009	36W	AL+PC	1200mm
GR-SZ-1009	40W	AL+PC	900mm
GR-SZ-1009	28W	AL+PC	600mm
GR-SZ-1009	18W	AL+PC	300mm



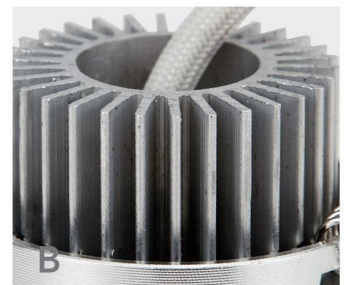
LED Ceiling&Down Light

LED Ceiling light



■ Features

- Embedded energy-saving luminaries, power source are attached;
- High-purity aluminum lamp housing and brushed aluminum craft, implement high quality requirement;
- Protection for ballast from short-circuit, open-circuit and defective lamp;
- High temperature resistant iron and plastic fixture with powder coating, anticorrosive, solid and durable;
- Reasonable configuration, light weight, easy installation and maintenance;
- High color rendering index. True color expression.



Applications

- 1-Corridor, office, shopping mall, display window and inner lighting;
- 2-Reception room, lobby, hotel room lighting;
- 3-Museum, exhibition hall, art gallery exhibit lighting;
- 4-Bathroom, kitchen room and living room lighting.



Strong spring, enough steady; abrasion resistance, auxiliary heat dissipation.

Reflector, more smooth light.

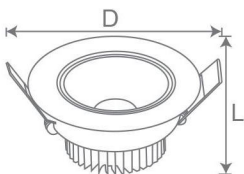
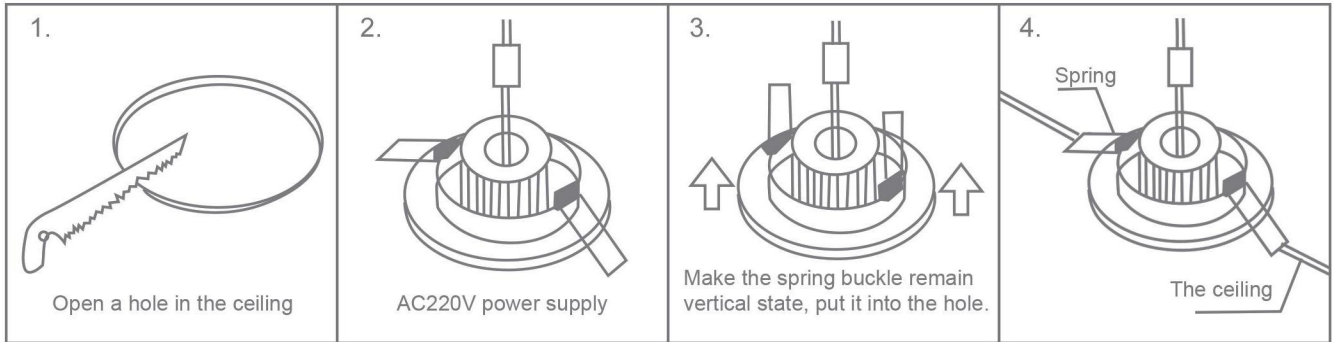
High quality aluminium alloy shell, no fade.

Thicker aluminium alloy for cooling well.

COB chip, high CRI > 80, high luminous efficient > 80lm/w, long lifespan > 30000hours.

Tempered glass face

UL & VDE wire, human design terminal, easy for connection.



Item No.	Power	Material	LED Type	Size(DxL)	Hole
GL-008-THA	3W	Aluminium+Glass	COB	φ82x60mm	φ75mm
GL-008-THA	5W	Aluminium+Glass	COB	φ82x55mm	φ75mm
GL-008-THA	7W	Aluminium+Glass	COB	φ105x55mm	φ95mm
GL-008-THA	10W	Aluminium+Glass	COB	φ105x55mm	φ95mm
GL-008-THA	15W	Aluminium+Glass	COB	φ105x55mm	φ110mm
GL-008-THA	18W	Aluminium+Glass	COB	φ135x55mm	φ110mm
GL-008-THB	3W	Aluminium+Glass	COB	φ82x60mm	φ75mm
GL-008-THB	5W	Aluminium+Glass	COB	φ82x55mm	φ75mm
GL-008-THB	7W	Aluminium+Glass	COB	φ105x55mm	φ95mm

LED Ceiling&Down Light

LED Down light



GL-009-TD

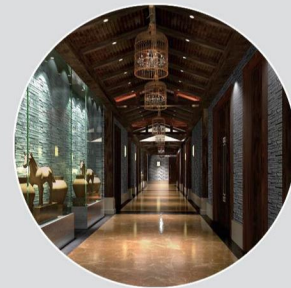
■ Features

- Good heat dissipation: stable body, aluminum housing, aluminum print circuit board;
- Isolated driver, input voltage: AC100-240V/50-60Hz, the voltage is available for different countries request;
- No UV light to avoid insects around;
- Low heat, high brightness, and works well under harsh conditions;
- This light is the most widely used light, can be applied to both indoor and outdoor.

Product Details



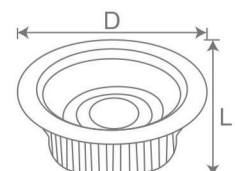
Application



Recess lighting/Office/Mall/Hall/KTV/
Plazas/Bar/Exhibition show/
Shop windows/Back lighting etc.



Item No.	Power	Material	LED Type	Size(DxL)	Hole
GL-009-TD	10W	Aluminium+Glass	COB	φ105x65mm	φ95mm
GL-009-TD	15W	Aluminium+Glass	COB	φ145x75mm	φ130mm
GL-009-TD	20W	Aluminium+Glass	COB	φ170x70mm	φ145mm
GL-009-TD	25W	Aluminium+Glass	COB	φ195x95mm	φ175mm
GL-009-TD	30W	Aluminium+Glass	COB	φ230x108mm	φ205mm
GL-009-TD	40W	Aluminium+Glass	COB	φ230x108mm	φ205mm
GL-009-TD	50W	Aluminium+Glass	COB	φ230x108mm	φ205mm
GL-009-TD	60W	Aluminium+Glass	COB	φ230x108mm	φ205mm



LED Ceiling&Down Light

LED Down light



GL-009-TDE

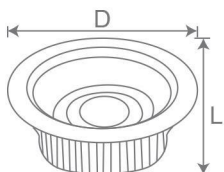


GL-009-TDF

Application



Item No.	Power	Material	LED Type	Size(DxL)	Hole
GL-009-TDE	5W	Aluminium+Glass	COB	φ90x45mm	φ75mm
GL-009-TDE	7W	Aluminium+Glass	COB	φ90x45mm	φ75mm
GL-009-TDE	10W	Aluminium+Glass	COB	φ134x60mm	φ125mm
GL-009-TDE	15W	Aluminium+Glass	COB	φ166x57.5mm	φ152mm
GL-009-TDE	20W	Aluminium+Glass	COB	φ194.5x62mm	φ175mm
GL-009-TDE	30W	Aluminium+Glass	COB	φ225x66mm	φ205mm
GL-009-TDF	10W	Aluminium+Glass	COB 11mm	φ90x42mm	φ75mm
GL-009-TDF	15W	Aluminium+Glass	COB 17mm	φ120x62mm	φ105mm
GL-009-TDF	30W	Aluminium+Glass	COB 24mm	φ165x70mm	φ145mm
GL-009-TDF	60W	Aluminium+Glass	COB 24mm	φ225x100mm	φ200mm



LED Ceiling&Down Light

LED Down light



GL-009-TDB

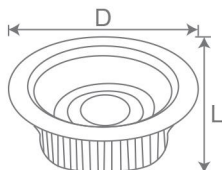


GL-009-TDC

Application



Item No.	Power	Material	LED Type	Size(DxL)	Hole
GL-009-TDB	5W	Aluminium+Glass	COB	φ100x57mm	φ85-90mm
GL-009-TDB	10W	Aluminium+Glass	COB	φ130x48mm	φ110-115mm
GL-009-TDB	15W	Aluminium+Glass	COB	φ160x50mm	φ145mm
GL-009-TDB	20W	Aluminium+Glass	COB	φ190x55mm	φ170mm
GL-009-TDB	30W	Aluminium+Glass	COB	φ220x50mm	φ205mm
GL-009-TDC	3W	Aluminium+Glass	COB 11mm	φ90x45m	φ75mm
GL-009-TDC	5W	Aluminium+Glass	COB 20mm	φ105x45mm	φ90mm
GL-009-TDC	7W	Aluminium+Glass	COB 32mm	φ120x45mm	φ105mm
GL-009-TDC	10W	Aluminium+Glass	COB 32mm	φ130x55mm	φ110mm
GL-009-TDC	12W	Aluminium+Glass	COB 32mm	φ145x53mm	φ125mm
GL-009-TDC	15W	Aluminium+Glass	COB 32mm	φ165x53mm	φ145mm
GL-009-TDC	20W	Aluminium+Glass	COB 42mm	φ195x60mm	φ175mm
GL-009-TDC	30W	Aluminium+Glass	COB 60mm	φ225x60mm	φ200mm



Product Details



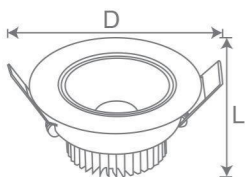
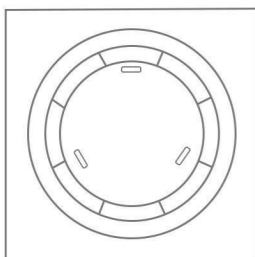
Application



Recess lighting/Office/Mall/Hall/KTV/
Plazas/Bar/Exhibition show/
Shop windows/Back lighting etc.

■ Features

- Embedded energy-saving luminaries, power source are attached;
- High-purity aluminum lamp housing and brushed aluminum craft, implement high quality requirement;
- Protection for ballast from short-circuit, open-circuit and defective lamp;
- High temperature resistant iron and plastic fixture with powder coating, anticorrosive, solid and durable;
- Reasonable configuration, light weight, easy installation and maintenance;
- High color rendering index. True color expression.



Item No.	Power	Material	Size(D*L)	Hole
GL-008-THD	5W	plastics	φ93mm	70mm
GL-008-THD	5W	plastics	φ93mm	70mm
GL-008-THD	5W	plastics	φ93mm	70mm

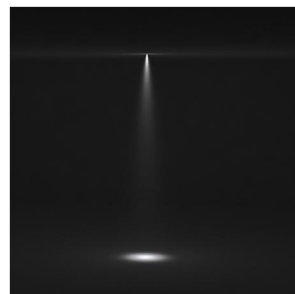
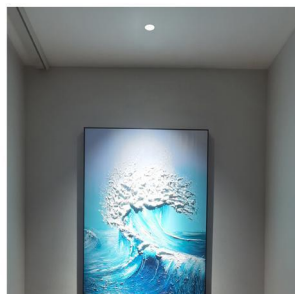
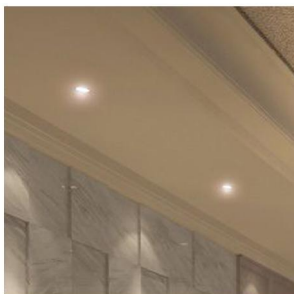
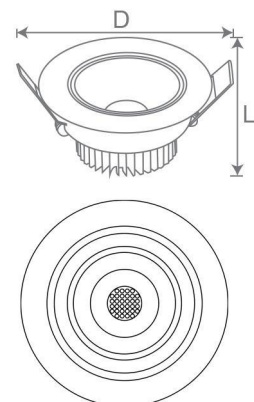


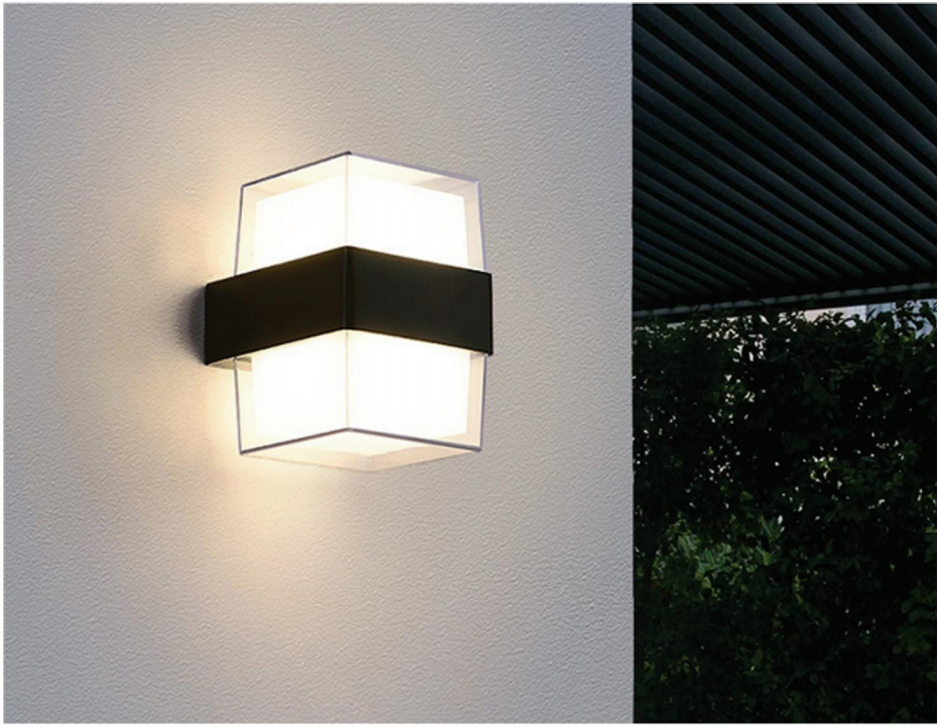
■ Features

- Embedded energy-saving luminaries, power source are attached;
- High-purity aluminum lamp housing and brushed aluminum craft, implement high quality requirement;
- Protection for ballast from short-circuit, open-circuit and defective lamp;
- High temperature resistant iron and plastic fixture with powder coating, anticorrosive, solid and durable;
- Reasonable configuration, light weight, easy installation and maintenance;
- High color rendering index. True color expression.



Item No.	Power	Material	Size(D*L)	Hole
GL-008-THC	5W	plastics	φ92mm	70mm
GL-008-THC	5W	plastics	φ92mm	70mm
GL-008-THC	5W	plastics	φ92mm	70mm

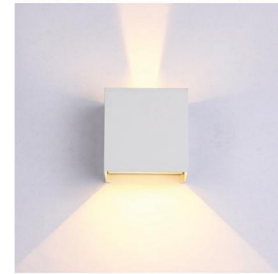
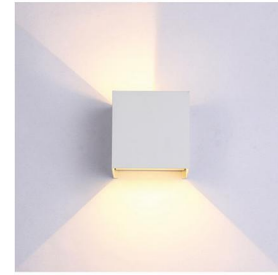




■ Features

- Pretty appearance;
- LED bulb with super high lumen;
- High brightness with good heat sink For LED bulb;
- This LED bulb light is easy to install and use;
- Super waterproof ability;
- Lsolated driver, non-isolated driver available;
- Low power consumption, lower heating during operation;
- No mercury, enviromental protection.

Item No.	Power	LED Type	Material	Size(D*L*W*H)	Beam Angle
GR-SZ-1201	12W	3030SMD	Aluminum	L100*W100*H135mm	120°
GR-SZ-1201	6W	3030SMD	Aluminum	L100*W100*H80mm	120°
GR-SZ-1201	12W	3030SMD	Aluminum	L100*W100*H135mm	120°
GR-SZ-1201	6W	3030SMD	Aluminum	L100*W100*H80mm	120°



■ Features

- Pretty appearance;
- LED bulb with super high lumen;
- High brightness with good heat sink For LED bulb;
- This LED bulb light is easy to install and use;
- Super waterproof ability;
- Isolated driver, non-isolated driver available;
- Low power consumption, lower heating during operation;
- No mercury, environmental protection.

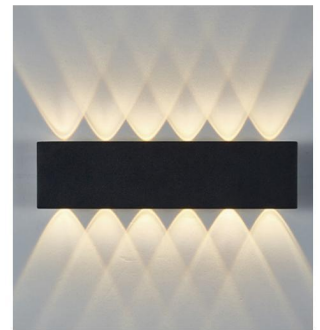
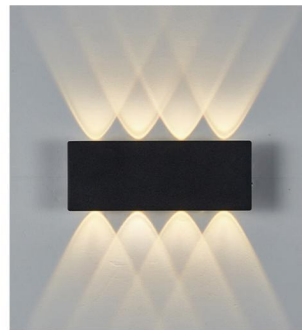
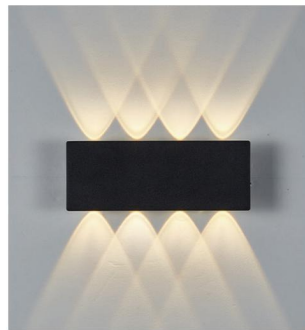
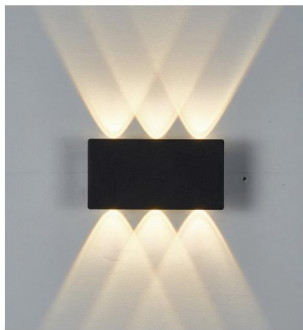
Item No.	Power	LED Type	Material	Size(D*L/L*W*H)
GR-SZ-1202	6W	3030SMD	Aluminum	100*100mm
GR-SZ-1202	10W	3030SMD	Aluminum	120*120mm



■ Features

- Pretty appearance;
- LED bulb with super high lumen;
- High brightness with good heat sink For LED bulb;
- This LED bulb light is easy to install and use;
- Super waterproof ability;
- Lsolated driver, non-isolated driver available;
- Low power consumption, lower heating during operation;
- No mercury, enviromental protection.

Item No.	Power	LED Type	Material	Size(D*L/L*W*H)	Beam Angle
GR-SZ-1203	10W	COB/GU10	Aluminum	L150*W65*H70mm	120°
GR-SZ-1203	5W	COB/GU10	Aluminum	L80*W65*H70mm	120°



■ Features

- Pretty appearance;
- LED bulb with super high lumen;
- High brightness with good heat sink For LED bulb;
- This LED bulb light is easy to install and use;
- Super waterproof ability;
- Isolated driver, non-isolated driver available;
- Low power consumption, lower heating during operation;
- No mercury, enviromental protection.

Item No.	Power	LED Type	Material	Size(D*L*W*H)	Beam Angle
GR-SZ-1204	6W	3030SMD	Aluminum	L160*W80*H35mm	35°
GR-SZ-1204	8W	3030SMD	Aluminum	L210*W80*H35mm	35°
GR-SZ-1204	10W	3030SMD	Aluminum	L260*W80*H35mm	35°
GR-SZ-1204	12W	3030SMD	Aluminum	L310*W80*H35mm	35°



■ Features

- Pretty appearance;
- LED bulb with super high lumen;
- High brightness with good heat sink For LED bulb;
- This LED bulb light is easy to install and use;
- Super waterproof ability;
- Isolated driver, non-isolated driver available;
- Low power consumption, lower heating during operation;
- No mercury, enviromental protection.

Item No.	Power	LED Type	Material	Size(D*L/L*W*H)	Beam Angle
GR-SZ-1205	4W	3030SMD	Aluminum	L130*W100*H45mm	35°
GR-SZ-1205	6W	3030SMD	Aluminum	L180*W100*H45mm	35°
GR-SZ-1205	8W	3030SMD	Aluminum	L230*W100*H45mm	35°
GR-SZ-1205	10W	3030SMD	Aluminum	L280*W100*H45mm	35°



■ Features

- Pretty appearance;
- LED bulb with super high lumen;
- High brightness with good heat sink For LED bulb;
- This LED bulb light is easy to install and use;
- Super waterproof ability;
- Lsolated driver, non-isolated driver available;
- Low power consumption, lower heating during operation;
- No mercury, enviromental protection.

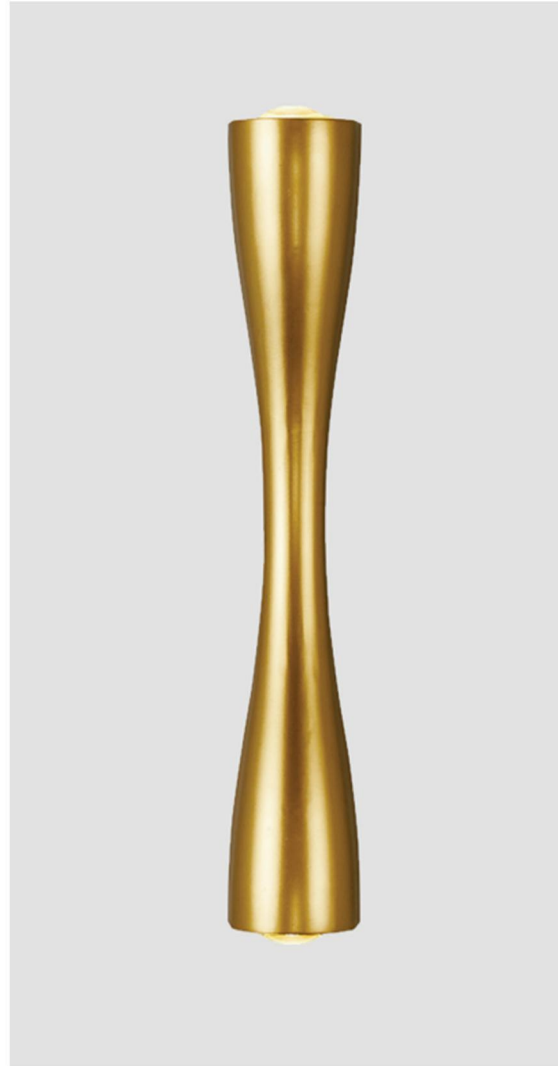
Item No.	Power	LED Type	Material	Size(D*L/L*W*H)	Beam Angle
GR-SZ-1206	2W	3030SMD	Aluminum	L75*W80*H33mm	35°
GR-SZ-1206	4W	3030SMD	Aluminum	L120*W80*H35mm	35°
GR-SZ-1206	8W	3030SMD	Aluminum	L170*W80*H35mm	35°



■ Features

- Pretty appearance;
- LED bulb with super high lumen;
- High brightness with good heat sink For LED bulb;
- This LED bulb light is easy to install and use;
- Super waterproof ability;
- Isolated driver, non-isolated driver available;
- Low power consumption, lower heating during operation;
- No mercury, enviromental protection.

Item No.	Power	LED Type	Material	Size(D*L/L*W*H)	Beam Angle
GR-SZ-1207	10+2W	3030SMD	Aluminum	L200*W100*H80mm	40°
GR-SZ-1207	6+1W	3030SMD	Aluminum	L130*W65*H50mm	40°



■ Features

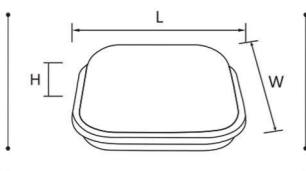
- Pretty appearance;
- LED bulb with super high lumen;
- High brightness with good heat sink For LED bulb;
- This LED bulb light is easy to install and use;
- Super waterproof ability;
- Isolated driver, non-isolated driver available;
- Low power consumption, lower heating during operation;
- No mercury, enviromental protection.

Item No.	Power	LED Type	Material	Size(D*L/W*H)	Beam Angle
GR-SZ-1208	8W	3030SMD	Aluminum	L240*W60*H60mm	35°
GR-SZ-1208	8W	3030SMD	Aluminum	L350*W60*H60mm	35°



■ Features

IP65 outdoor indoor both using
 Plastic housing, more light, more energy saving
 Cover can change different model easily
 fireproof material
 2.5kv surge protect, 90-305v

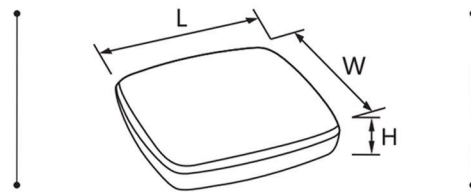


Item No.	Power	LED Type	Material	Size(D*L/L*W*H)	Beam Angle
GR-SZ-1113	15W	36PCS	PLASTIC	L170*W170*H70mm	120°
GR-SZ-1113	20W	48PCS	PLASTIC	L220*W220*H70mm	120°



■ Features

DOB item
 Thin up to 27mm
 Easy for assembling
 2.5kv surge, 180-265v
 high lumin
 160 lighting degree

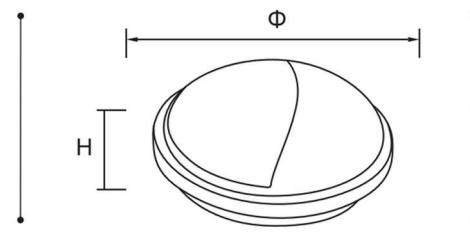


Item No.	Power	LED Type	Size(D*L/L*W*H)	Beam Angle
GR-SZ-1111	10W	0.5W 76PCS	L125*W125*H27mm	120°
GR-SZ-1111	15W	0.5W 144PCS	L155*W155*H27mm	120°
GR-SZ-1111	22W	0.5W 216PCS	L200*W200*H27mm	120°



■ Features

IP65 outdoor indoor both using
 Plastic housing,more light,more energy saving
 Cover can change diferent model easily
 fireproof material
 2.5kv surge protect,90-305v

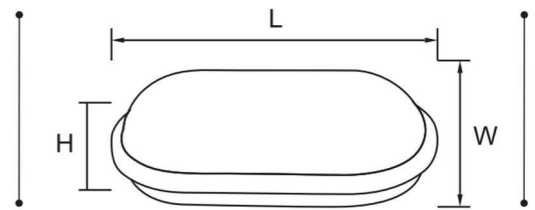


Item No.	Power	LED Type	Material	Size(D*L/L*W*H)	Beam Angle
GR-SZ-1114	15W	36PCS	PLASTIC	Φ221*H72mm	120°
GR-SZ-1114	20W	48PCS	PLASTIC	Φ167*H62mm	120°



■ Features

IP65 outdoor indoor both using
 Plastic housing,more light,more energy saving
 Cover can change diferent model easily
 fireproof material
 2.5kv surge protect,90-305v

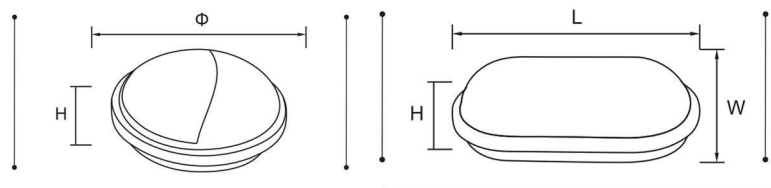


Item No.	Power	LED Type	Material	Size(D*L/L*W*H)	Beam Angle
GR-SZ-1115A	10W	36PCS	PLASTIC	L275*W115*H76mm	120°
GR-SZ-1115A	15W	48PCS	PLASTIC	L215*W115*H62mm	120°



■ Features

- IP65 outdoor indoor both using
- Plastic housing, more light, more energy saving
- Cover can change different model easily
- fireproof material
- 2.5kv surge protect, 90-305v

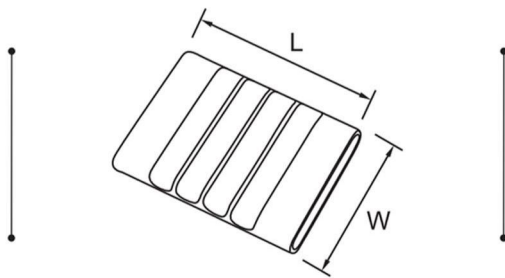


Item No.	Power	LED Type	Material	Size(D*L/L*W*H)	Luminous
GR-SZ-1115B	10W	SMD2835*28	PP+PP	L170*W80*H35mm	100LM/W
GR-SZ-1115B	18W	SMD2835*46	PP+PP	L200*W95*H35mm	100LM/W
GR-SZ-1115B	10W	SMD2835*28	PP+PP	φ140*35mm	100LM/W
GR-SZ-1115B	18W	SMD2835*46	PP+PP	φ175*35mm	100LM/W



■ Features

IP65 outdoor indoor both using
 Plastic housing,more light,more energy saving
 Cover can change diferent model easily
 fireproof material
 2.5kv surge protect,90-305v



Item No.	Power	LED Type	Material	Size(D*L/L*W*H)	Beam Angle
GR-SZ-1116	15W	36PCS	PLASTIC	L275*W105mm	120°
GR-SZ-1116	20W	48PCS	PLASTIC	L275*W105mm	120°



GR-SZ-1308

Material	Size	Power
	60*100mm	10W
Aluminum	80*120mm	20W
	90*130mm	30W



GR-SZ-1309

Material	Size	Power
	50*140mm	10W
Aluminum	60*160mm	20W
	75*180mm	30W



GR-SZ-1310

Material	Size	Power
	52*74mm	3W
Aluminum	72*90mm	7W
	100*160mm	12W
	100*160mm	18W

Material	Size	Power
	52*74mm	5W
Aluminum	72*90mm	10W
	100*160mm	20W
	100*160mm	30W



GR-SZ-1311



GR-SZ-1312

Material	Size	Power
Aluminum	70*120mm	20W
	90*140mm	30W
	70*120mm	20W
	90*140mm	30W

Material	Size	Power
Aluminum + built-in radiator	65*125mm	20W
	76*139mm	30W



GR-SZ-1313



GR-SZ-1314

Material	Size	Power
Aluminum + built-in radiator	70*150mm	20W
	80*155mm	30W

Material	Size	Power
Die-cast aluminum	70*110mm	20W



GR-SZ-1315



GR-SZ-1316

Material	Size	Power
Die-cast aluminum	60*105mm	10W
	82*126mm	20W
	90*130mm	30W
	90*130mm	40W

Material	Size	Power
Aluminum + built-in radiator	66*136mm	10W
	76*139mm	20W
	88*147mm	30W



GR-SZ-1317



GR-SZ-1318

Material	Size	Power
Aluminum + radiator	55*120mm	10W
	55*160mm	20W
	75*160mm	30W

Material	Size	Power
Aluminum	105*85mm	20W
	105*95mm	30W
	105*115mm	30W



GR-SZ-1319

Material	Size	Power
Aluminum + radiator	60*160mm	20W
	80*180mm	40W



GR-SZ-1301



GR-SZ-1302

Material	Size	Power
Aluminum + radiator	66*136mm	10W
	76*139mm	20W
	88*147mm	30W

Material	Size	Power
Aluminum + radiator	50*76mm	7W
	70*88mm	12W
	85*115mm	20W
	85*115mm	30W



GR-SZ-1303



GR-SZ-1304

Material	Size	Power
Aluminum + radiator	50*100mm	10W
	60*135mm	20W
	80*150mm	30W
	90*160mm	40W

Material	Size	Power
Die-cast aluminum	65*125mm	7W
	90*165mm	15W



GR-SZ-1305



GR-SZ-1306

Material	Size	Power
Aluminum	60*120mm	7W
	90*100mm	20W

Material	Size	Power
Aluminum + radiator	70*100mm	10W
	90*100mm	20W
	110*115mm	30W
	110*150mm	40W

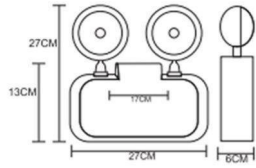


GR-SZ-1307

GR-SZ-1508



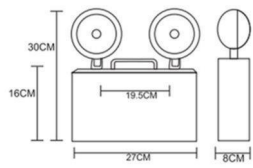
Size 270*130*270*60mm
 Voltage AC110-165V
 AC165-265V
 50-60HZ
 Power 3W



GR-SZ-1509



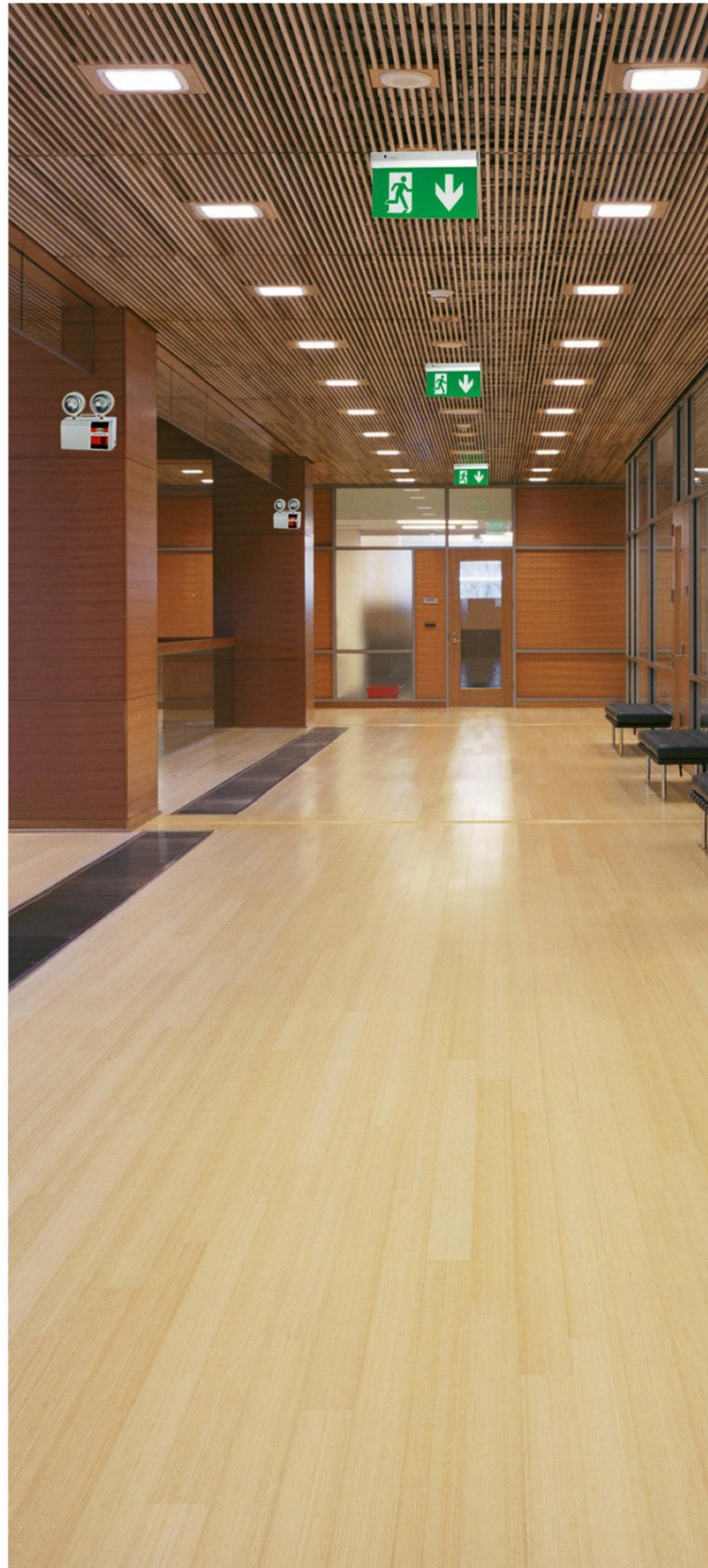
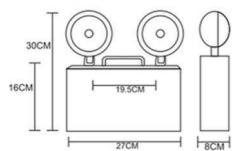
Size 270*160*300*80mm
 Voltage AC110-165V
 AC165-265V
 50-60HZ
 Power 3W



GR-SZ-1510



Size 270*150*260*85mm
 Voltage AC110-165V
 AC165-265V
 50-60HZ
 Power 3W

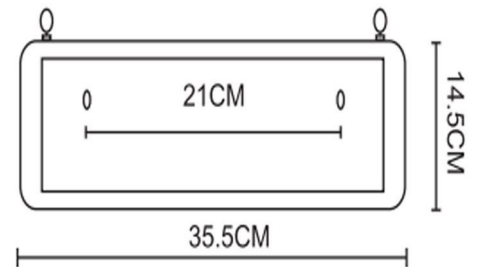




GR-SZ-1501



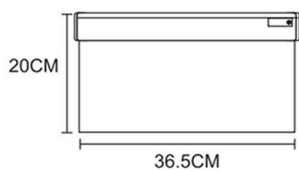
Size 355*145*23mm
 Power 3W
 Voltage AC110-120V
 AC220-265V
 50-60HZ



GR-SZ-1502



Size 365*200*4mm
 Power 3W
 Voltage AC110-120V
 AC220-265V
 50-60HZ



GR-SZ-1503



Size 355*145*23mm
 Power 3W
 Voltage AC110-120V
 AC220-265V
 50-60HZ





Item No. GR-SZ-1504
 Size 356*25*142mm
 Power 3W
 Material Aluminum alloy+ acrylic



Item No. GR-SZ-1505
 Size 398*86*250mm
 Power 3W
 Material Iron+acrylic or glass



Item No. GR-SZ-1506
 Size 390*40*163mm
 Power 3W
 Material Iron+acrylic or glass



Item No. GR-SZ-1507
 Size 330*25*145mm
 Power 3W
 Material Iron+acrylic or glass